

WAAS Ch <b>49199</b> <b>W31A</b>	APP CRS <b>310°</b>	Rwy Idg <b>4559</b> TDZE <b>390</b> Apt Elev <b>390</b>
----------------------------------------	------------------------	---------------------------------------------------------------

# RNAV (GPS) RWY 31

TEXARKANA RGNL-WEBB FLD (TXK)

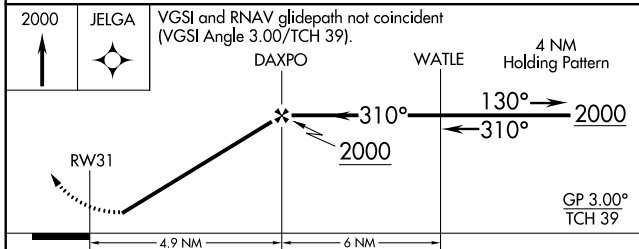
**⚠** DME/DME RNP-0.3 NA. Visibility reduction by helicopters NA. For uncompensated Baro-VNAV systems, LNAV/VNAV NA below -1.5°C (5°F) or above 48°C (118°F). When local altimeter setting not received, use J Lynn Helms Sevier County altimeter setting and increase all DA/MDA 100 feet, increase LPV and LNAV/VNAV all Cats, and LNAV Cat C visibility 1/4 mile, LNAV Cat D visibility 1/2 mile and circling Cat C and D visibility 1/4 mile. Baro-VNAV NA when using J Lynn Helms Sevier County altimeter setting. When VGSI inoperative, procedure NA at night.

**MISSED APPROACH:**  
Climb to 2000 direct JELGA and hold.

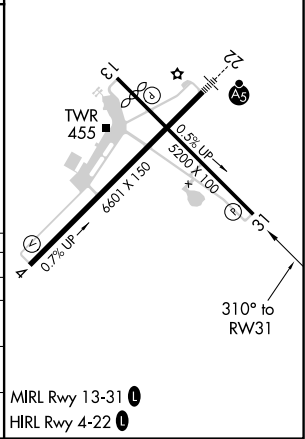
ATIS <b>120.2</b>	FORT WORTH CENTER <b>123.925 269.475</b>	TEXARKANA TOWER★ <b>123.875 (CTAF) 0 235.625</b>	GND CON <b>119.225</b>
----------------------	---------------------------------------------	-----------------------------------------------------	---------------------------



ELEV 390	<b>D</b> TDZE 390
----------	-------------------



CATEGORY	A	B	C	D
LPV DA	645-1 255 (300-1)			
LNAV/VNAV DA	707-1 317 (400-1 1/4)			
LNAV MDA	920-1 530 (600-1)	920-1 1/2 530 (600-1 1/2)	920-1 3/4 530 (600-1 3/4)	
CIRCLING	920-1 530 (600-1)	920-1 1/2 530 (600-1 1/2)	1000-2 610 (700-2)	



SC-1, 07 OCT 2021 to 04 NOV 2021

SC-1, 07 OCT 2021 to 04 NOV 2021