

VORTAC TXK 116.3 Chan 110	APP CRS 122°	Rwy Idg 4559 TDZE 387 Apt Elev 390
--	------------------------	---

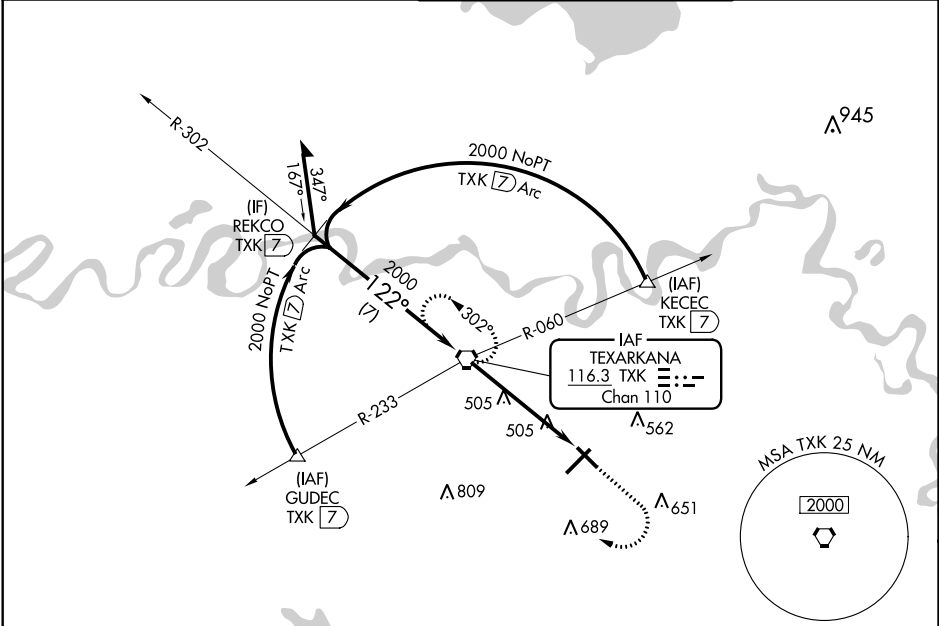
VOR RWY 13

TEXARKANA RGNL-WEBB FLD (TXK)

⚠ When local altimeter setting not received, use J Lynn Helms Sevier County altimeter setting and increase all MDA 100 feet, increase S-13 and circling Cat C and D visibility ¼ mile. Visibility reduction by helicopters NA. VDP NA when using J Lynn Helms Sevier County altimeter setting.

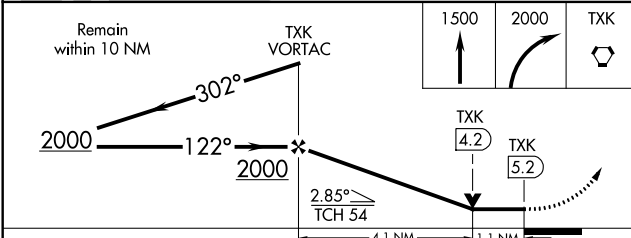
⚠ MISSED APPROACH: Climb to 1500 then climbing right turn to 2000 direct TXK VORTAC and hold.

ATIS 120.2	FORT WORTH CENTER 123.925 269.475	TEXARKANA TOWER* 123.875 (CTAF) 235.625	GND CON 119.225
----------------------	---	---	---------------------------



SC-1, 07 OCT 2021 to 04 NOV 2021

SC-1, 07 OCT 2021 to 04 NOV 2021



ELEV 390	TDZE 387
----------	----------

The detailed approach diagram shows the final descent path from 122° 5.2 NM from FAF. It includes:

- Runway**: RWY 13-31 (MIRL) and RWY 4-22 (HIRL).
- Altitudes**: 455 (TWR), 150 (500' X 150'), 100 (5200' X 100').
- Communication**: MIRA 13-31, HIRL 4-22, and FAF to MAP 5.2 NM.
- Speeds**: 60, 90, 120, 150, 180 knots.
- Time**: 5:12, 3:28, 2:36, 2:05, 1:44 minutes per mile.