

DAVIS MONTHAN TWO DEPARTURE (DMA2•DMA)

DAVIS-MONTHAN AFB (KDMA)

TUCSON, ARIZONA

SI-429 [USAF]

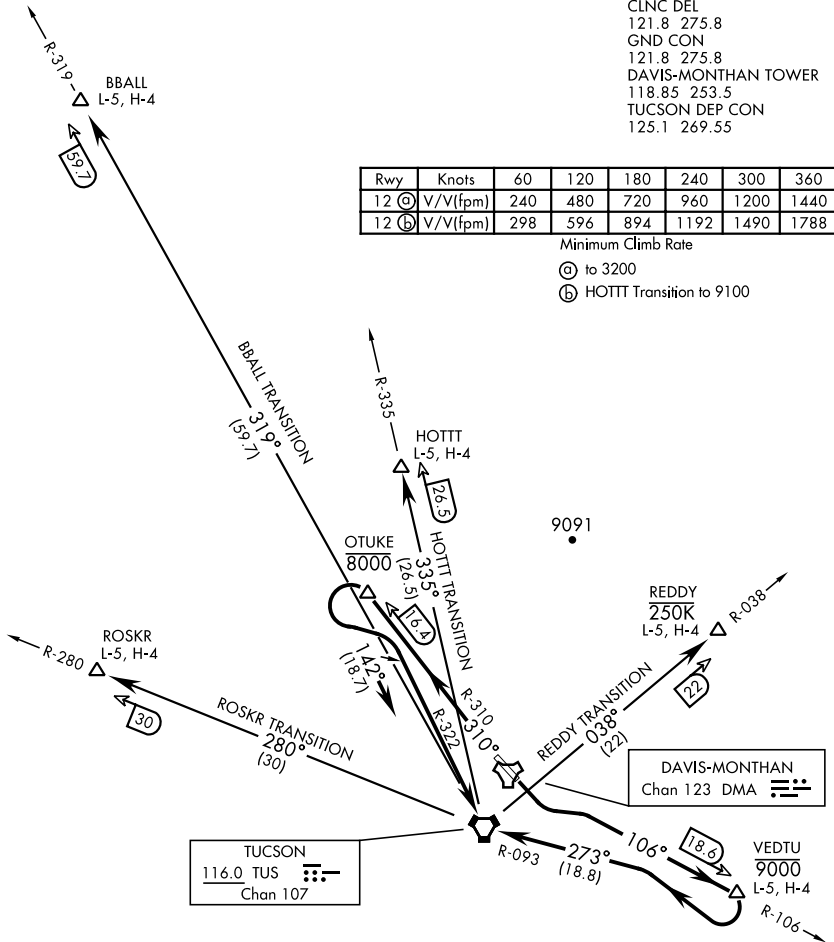
ATIS ★ 270.1
 CLNC DEL
 121.8 275.8
 GND CON
 121.8 275.8
 DAVIS-MONTHAN TOWER
 118.85 253.5
 TUCSON DEP CON
 125.1 269.55

Rwy	Knots	60	120	180	240	300	360
12 (A)	V/V(fpm)	240	480	720	960	1200	1440
12 (B)	V/V(fpm)	298	596	894	1192	1490	1788

Minimum Climb Rate

(A) to 3200

(B) HOTTT Transition to 9100



During RADAR operations aircraft will receive RADAR vectors to appropriate transition.

DME REQUIRED

(Continued on next page)

DAVIS MONTHAN TWO DEPARTURE (DMA2•DMA)

Orig 15AUG19

TUCSON, ARIZONA

DAVIS-MONTHAN AFB (KDMA)

SW-4, 07 OCT 2021 to 04 NOV 2021

SW-4, 07 OCT 2021 to 04 NOV 2021