

# HI-ILS or LOC Z RWY 12

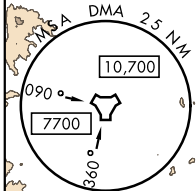
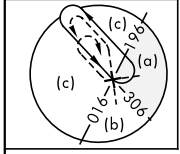
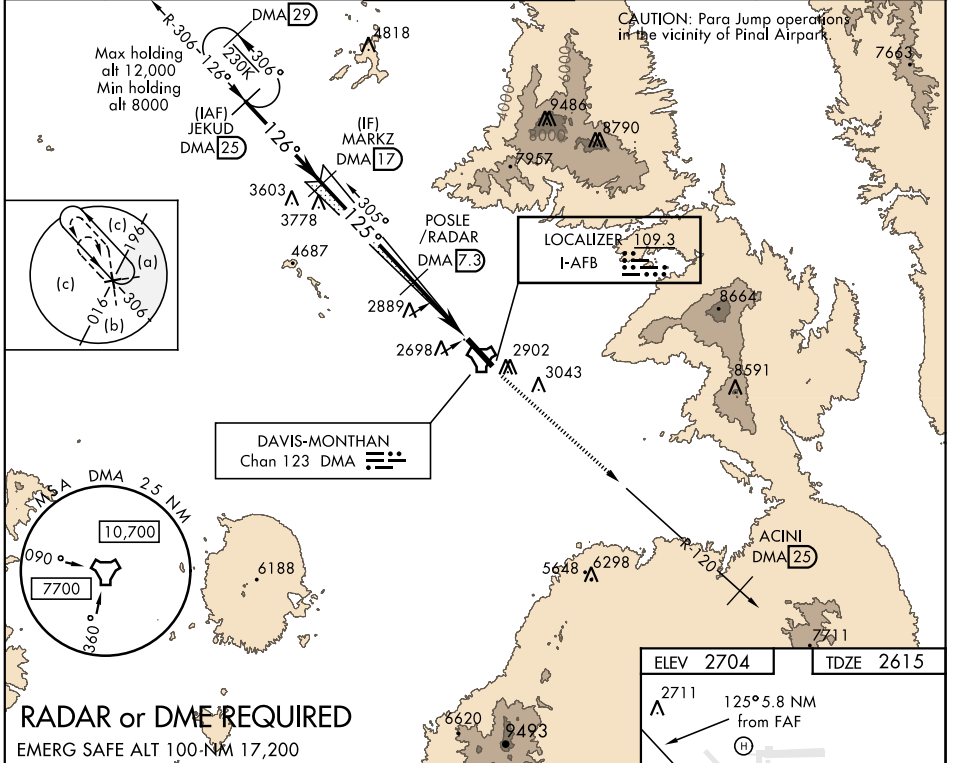
LOC I-AFB <b>109.3</b>	APCH CRS <b>125°</b>	Rwy Idg <b>13,643</b> TDZE <b>2615</b> Arprt Elev <b>2704</b>
---------------------------	-------------------------	---------------------------------------------------------------------

JAL-429 [USAF]

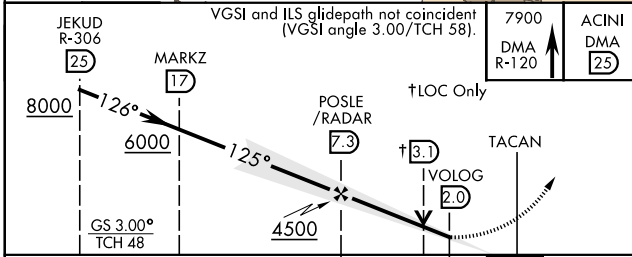
DAVIS-MONTHAN AFB (KDMA)

\* Circling not authorized S of Rwy 12-30. MISSED APPROACH: Climbing to 7900 intercept DMA TACAN R-120 to ACINI. Expect RADAR vectors.

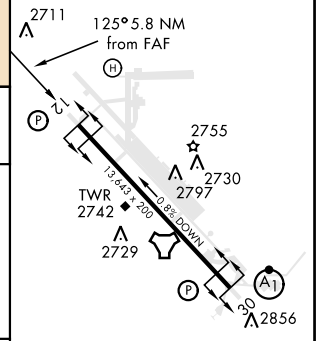
ATIS★ <b>270.1</b>	TUCSON APP CON 066°-274° <b>119.4 318.1</b> 275°-065° <b>125.1 269.55</b>	DAVIS-MONTHAN TOWER <b>118.85 253.5</b>	GND CON <b>121.8 275.8</b>	CLNC DEL <b>121.8 275.8</b>
-----------------------	---------------------------------------------------------------------------------	--------------------------------------------	-------------------------------	--------------------------------



**RADAR or DME REQUIRED**  
EMERG SAFE ALT 100-NM 17,200



ELEV 2704	TDZE 2615
-----------	-----------



CATEGORY	C	D	E
S-ILS 12	2865/40	250 (200-¾)	
S-LOC 12	3160-1½	545 (500-1½)	
<b>CIRCLING*</b>	3320-1¾ 616 (700-1¾)	3360-2 656 (700-2)	3440-2½ 736 (800-2½)

REIL Rwy 12	FAF to MAP 5.3 NM					
HIRL Rwy 12-30						
	Knots	120	140	160	180	200
	Min:Sec	2:39	2:16	1:59	1:46	1:35

# HI-ILS or LOC Z RWY 12

SW-4, 07 OCT 2021 to 04 NOV 2021

SW-4, 07 OCT 2021 to 04 NOV 2021