

LOC I-PDK 111.1	APP CRS 206°	Rwy Idg TDZE Apt Elev	4996 991 998
---------------------------	------------------------	-----------------------------	---

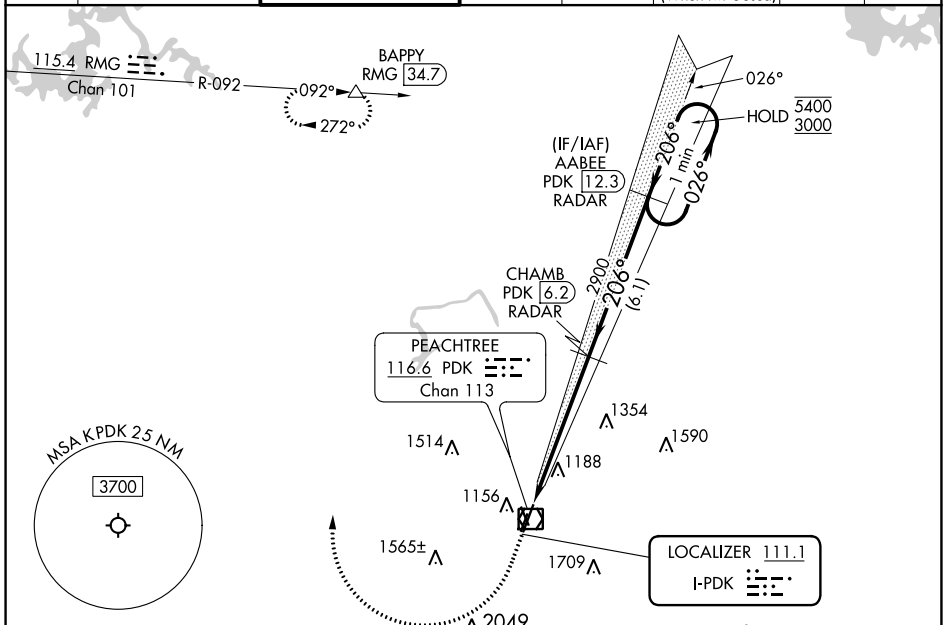
ILS or LOC RWY 21L

DEKALB-PEACHTREE (PDK)

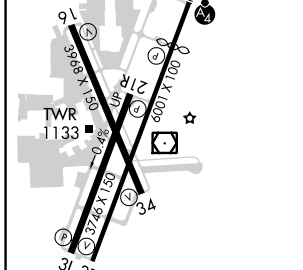
RADAR required for procedure entry. DME or RADAR required.

MAJSAF MISSED APPROACH: Climb to 1600 then climbing right turn to 4000 on heading 008° and RMG VORTAC R-092 to BAPPY/RMG 34.7 DME and hold.

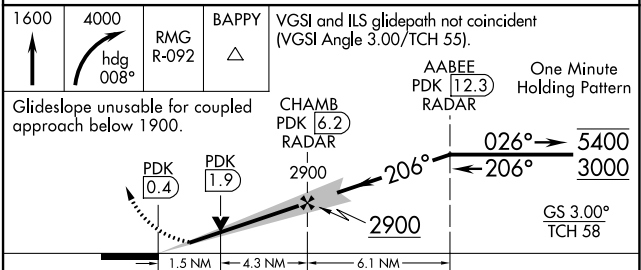
ATIS 128.4	ATLANTA APP CON 126.975 239.275	PEACHTREE TOWER ★ 120.9 (CTAF) 281.5	GND CON 121.6	CLNC DEL 125.2	CLNC DEL 120.9 (When twr closed)	UNICOM 122.95	120.0
----------------------	---	--	-------------------------	--------------------------	---	-------------------------	--------------



ELEV 998	D	TDZE 991
----------	----------	----------



FAF to MAP 5.8 NM					
Knots	60	90	120	150	180
Min:Sec	5:48	3:52	2:54	2:19	1:56



CATEGORY	A	B	C	D
S-ILS 21L	1330/40		339 (400-3/4)	
S-LOC 21L	1520/40	529 (600-3/4)	1520-1/4	529 (600-1/4)
C CIRCLING	1520-1 522 (600-1)		1840-2 1/2 842 (900-2 1/2)	2060-3 1062 (1100-3)

SE-4, 07 OCT 2021 to 04 NOV 2021

SE-4, 07 OCT 2021 to 04 NOV 2021