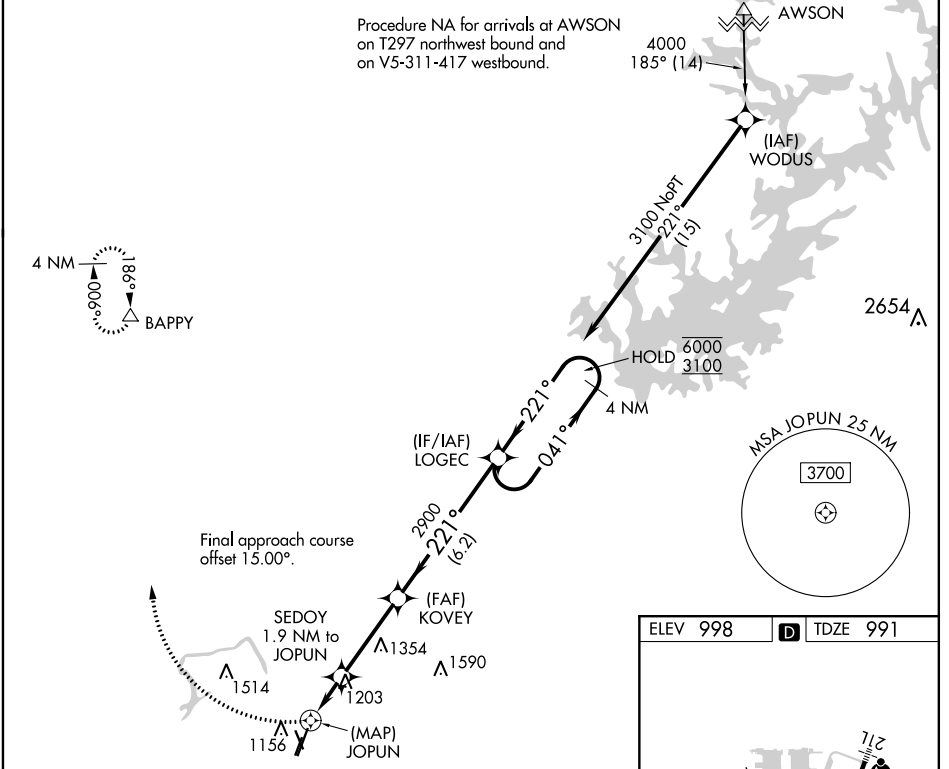


RNAV (GPS) Y RWY 21L

DEKALB-PEACHTREE (PDK)

| | |
|------------------------|------------------------|
| APP CRS 221° | Rwy Idg 4996 |
| | TDZE 991 |
| | Apt Elev 998 |

| | | | | | | | |
|---|---|--|-------------------------|--------------------------|---|---|--------------|
| RNP APCH. | | | | MALSF | | MISSED APPROACH: Climbing right turn to 4000 direct BAPPY and hold. | |
| <p>⚠ Circling Rwy 16, 34 NA at night. Rwy 21L helicopter visibility reduction below ¾ SM NA. For uncompensated Baro-VNAV systems, procedure NA below -8°C or above 54°C. For inop ALS, increase LNAV/VNAV all Cats visibility to 1½ SM and LNAV Cat A/B visibility to RVR 5500.</p> | | | | | | | |
| ATIS 128.4 | ATLANTA APP CON 126.975 239.275 | PEACHTREE TOWER* 120.9(CTAF) 281.5 | GND CON 121.6 | CLNC DEL 125.2 | CLNC DEL 120.9 (When twr closed) | UNICOM 122.95 | 120.0 |



| | | | | | | |
|-------------|---------|-----------------------|-------------|--------------|---------------|----------------------|
| 4000 | BAPPY | SEDOY 1.9 NM to JOPUN | | KOVEY 2900 | LOGEC | 4 NM Holding Pattern |
| *LNAV only. | | *0.8 NM to JOPUN | | | | |
| | | JOPUN | 1800* | 2900 | 041° → 6000 | ← 221° 3100 |
| | | GP 3.00° TCH 56 | | | | |
| CATEGORY | A | B | C | D | | |
| LNAV/VNAV | DA | 1449/55 | 458 (500-1) | | | |
| LNAV MDA | 1460/40 | 469 (500-¾) | 1460/60 | 469 (500-1¼) | | |
| CIRCLING | 1500-1 | 502 (600-1) | 1840-2½ | 2060-3 | 1062 (1100-3) | |

ELEV 998 **D** TDZE 991

HIRL Rwy 3R-21L **1**
MIRL Rws 16-34 and 3L-21R
REIL Rws 3R, 21L and 34

SE-4, 07 OCT 2021 to 04 NOV 2021

SE-4, 07 OCT 2021 to 04 NOV 2021