

LOC/DME I-RHX 109.35 Chan 30 (Y)	APP CRS 224°	Rwy Idg 9000 TDZE 1077 Apt Elev 1077
--	------------------------	---

ILS RWY 22L (CAT II)

WILMINGTON AIR PARK (ILN)

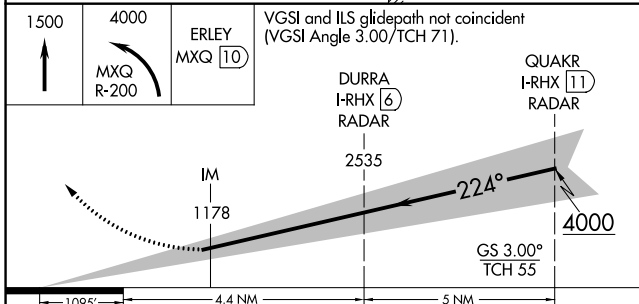
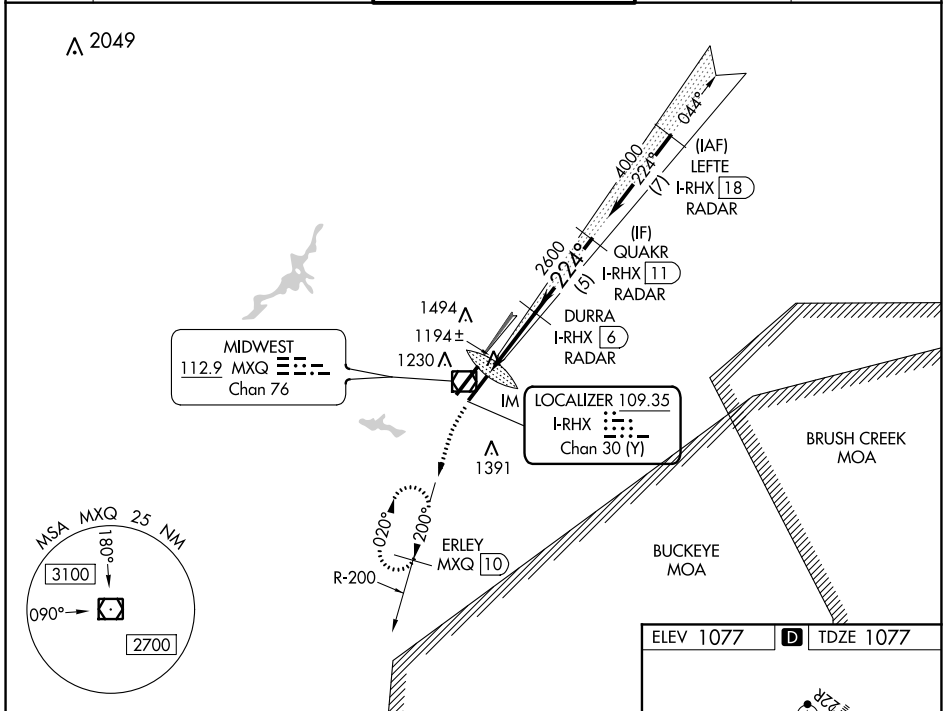
DME required for missed approach.
RADAR required for procedure entry.

Simultaneous approach authorized.
Procedure NA when tower closed.

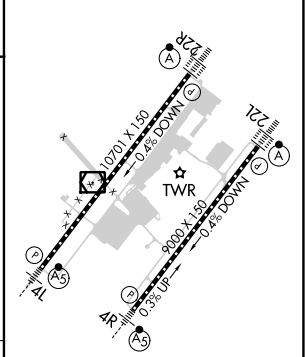


MISSED APPROACH: Climb to 1500 then climbing left turn to 4000 on MXQ VOR/DME R-200 to ERLEY/MXQ 10 DME and hold.

D-ATIS 124.925	COLUMBUS APP CON 118.85 269.275	WILMINGTON TOWER * 119.475 (CTAF) 0	GND CON 121.6	CLNC DEL 128.85
--------------------------	---	---	-------------------------	---------------------------



ELEV 1077	TDZE 1077
-----------	-----------



CATEGORY	A	B	C	D
S-ILS 22L	RA 98/12 100 DA 1177			

CATEGORY II ILS - SPECIAL AIRCREW & AIRCRAFT CERTIFICATION REQUIRED

TDZ/CL 22R
TDZ/CL 22L
HIRL Rwy 4R-22L
HIRL Rwy 4L-22R

EC-2, 07 OCT 2021 to 04 NOV 2021

EC-2, 07 OCT 2021 to 04 NOV 2021