

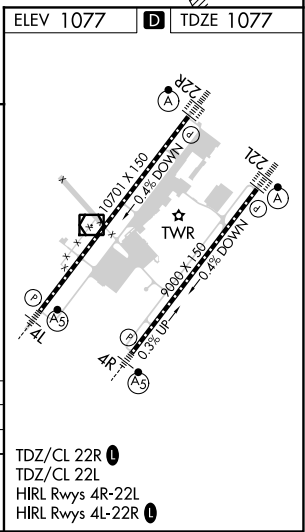
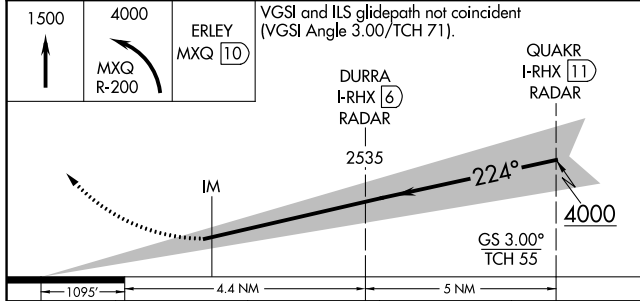
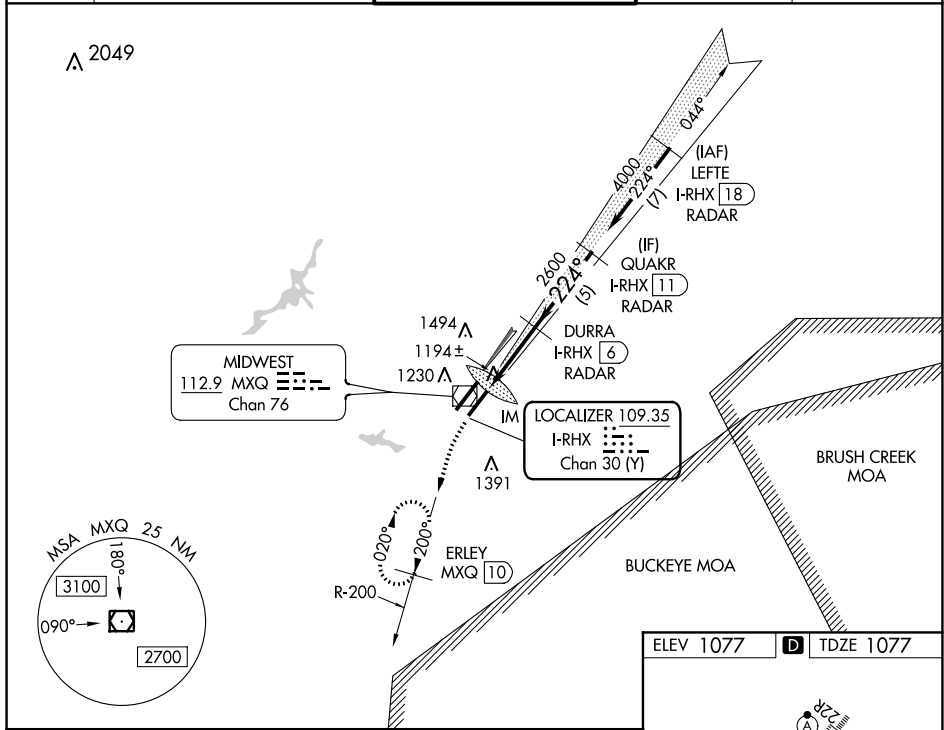
LOC/DME I-RHX <b>109.35</b> Chan 30 (Y)	APP CRS <b>224°</b>	Rwy Idg <b>9000</b> TDZE <b>1077</b> Apt Elev <b>1077</b>
---	------------------------	---

# ILS RWY 22L (SA CAT I)

WILMINGTON AIR PARK (ILN)

DME required for missed approach. RADAR required for procedure entry.	ALSIF-2	MISSED APPROACH: Climb to 1500 then climbing left turn to 4000 on MXQ VOR/DME R-200 to ERLEY/MXQ 10 DME and hold.
<p><b>⚠</b> Simultaneous approach authorized. Requires specific OPSPEC, MSPEC, or LOA approval. Procedure NA when tower closed.</p>	<p><b>(A)</b></p>	

D-ATIS <b>124.925</b>	COLUMBUS APP CON <b>118.85 269.275</b>	WILMINGTON TOWER ★ <b>119.475 (CTAF)</b>	GND CON <b>121.6</b>	CLNC DEL <b>128.85</b>
--------------------------	---	---	-------------------------	---------------------------



CATEGORY	A	B	C	D
S-ILS 22L	RA 152/16 150 DA 1227			
<b>SA CATEGORY I ILS - SPECIAL AIRCREW &amp; AIRCRAFT CERTIFICATION REQUIRED</b>				

TDZ/CL 22R **1**  
TDZ/CL 22L  
HIRL Rwys 4R-22L  
HIRL Rwys 4L-22R **1**

EC-2, 07 OCT 2021 to 04 NOV 2021

EC-2, 07 OCT 2021 to 04 NOV 2021