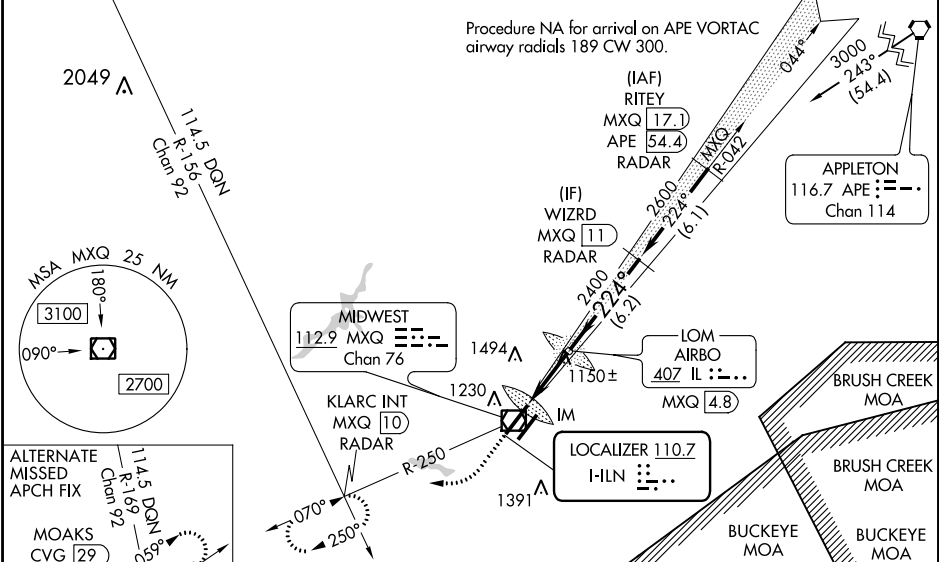


LOC I-ILN 110.7	APP CRS 224°	Rwy Idg 10701 TDZE 1077 Apt Elev 1077
---------------------------	------------------------	--

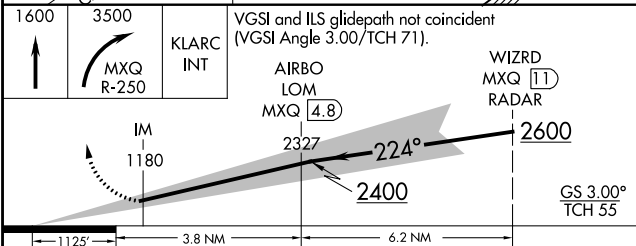
ILS RWY 22R (CAT II & III)

WILMINGTON AIR PARK (ILN)

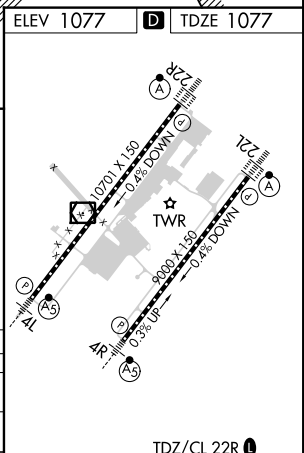
DME or RADAR required for procedure entry.		ALSF-2 	MISSED APPROACH: Climb to 1600 then climbing right turn to 3500 on MXQ VOR/DME R-250 to KLARC INT/MXQ 10 DME/RADAR and hold, continue climb-in-hold to 3500.	
Simultaneous approach authorized. Procedure NA when control tower closed. DME from MXQ VOR/DME. Simultaneous reception of I-ILN and MXQ DME required.				
D-ATIS 124.925	COLUMBUS APP CON 118.85 269.275	WILMINGTON TOWER ★ 119.475 (CTAF)	GND CON 121.6	CLNC DEL 128.85



ELEV 1077		TDZE 1077
-----------	--	-----------



CATEGORY	A	B	C	D
S-ILS 22R	CAT II RA 106/12 100 DA 1177			
S-ILS 22R	CAT III RVR 06			



CATEGORY II & III ILS - SPECIAL AIRCREW & AIRCRAFT CERTIFICATION REQUIRED

TDZ/CL 22R
 TDZ/CL 22L
 HIRL Rwy 4R-22L
 HIRL Rwy 4L-22R

EC-2, 07 OCT 2021 to 04 NOV 2021

EC-2, 07 OCT 2021 to 04 NOV 2021