

LOC I-ILN <b>110.7</b>	APP CRS <b>224°</b>	Rwy Idg TDZE Apt Elev	<b>10701</b> <b>1077</b> <b>1077</b>
---------------------------	------------------------	-----------------------------	--

# ILS RWY 22R (SA CAT I)

WILMINGTON AIR PARK (ILN)

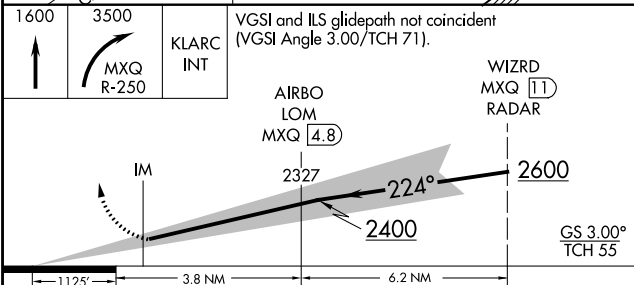
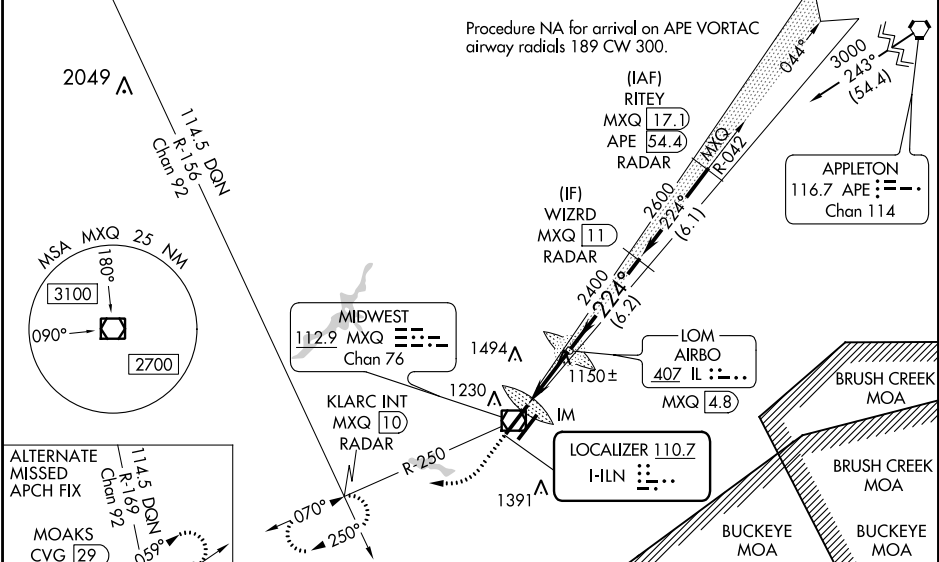
DME or RADAR required for procedure entry.

Simultaneous approach authorized. Requires specific OPSPEC, MSPEC, or LOA approval. Procedure NA when control tower closed. DME from MXQ VOR/DME. Simultaneous reception of I-ILN and MXQ DME required.

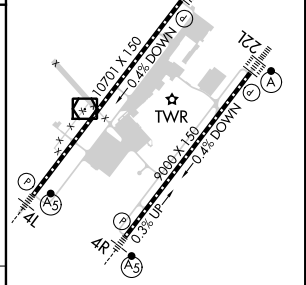
ALSIF-2

MISSED APPROACH: Climb to 1600 then climbing right turn to 3500 on MXQ VOR/DME R-250 to KLARC INT/MXQ 10 DME/RADAR and hold, continue climb-in-hold to 3500.

D-ATIS <b>124.925</b>	COLUMBUS APP CON <b>118.85 269.275</b>	WILMINGTON TOWER ★ <b>119.475</b> (CTAF) <b>0</b>	GND CON <b>121.6</b>	CLNC DEL <b>128.85</b>
--------------------------	---	--	-------------------------	---------------------------



ELEV 1077	D	TDZE 1077
-----------	---	-----------



CATEGORY	A	B	C	D
S-ILS 22R	RA 148/14		150 DA 1227	

**SA CATEGORY I ILS - SPECIAL AIRCREW & AIRCRAFT CERTIFICATION REQUIRED**

TDZ/CL 22R **0**

TDZ/CL 22L

HIRL Rwy 4R-22L

HIRL Rwy 4L-22R **0**

EC-2, 07 OCT 2021 to 04 NOV 2021

EC-2, 07 OCT 2021 to 04 NOV 2021