

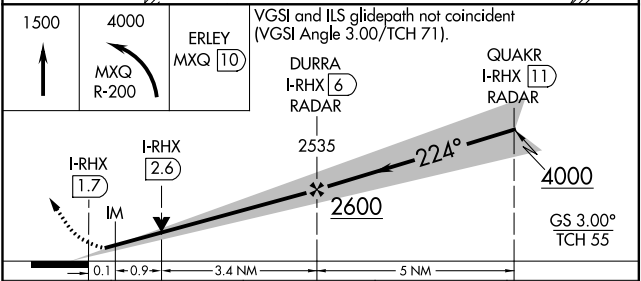
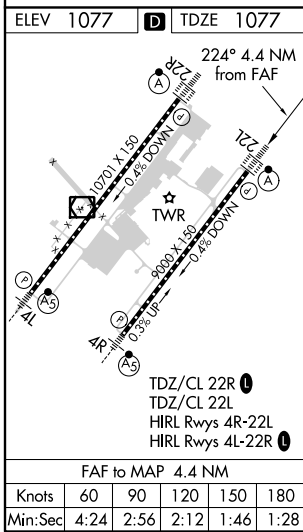
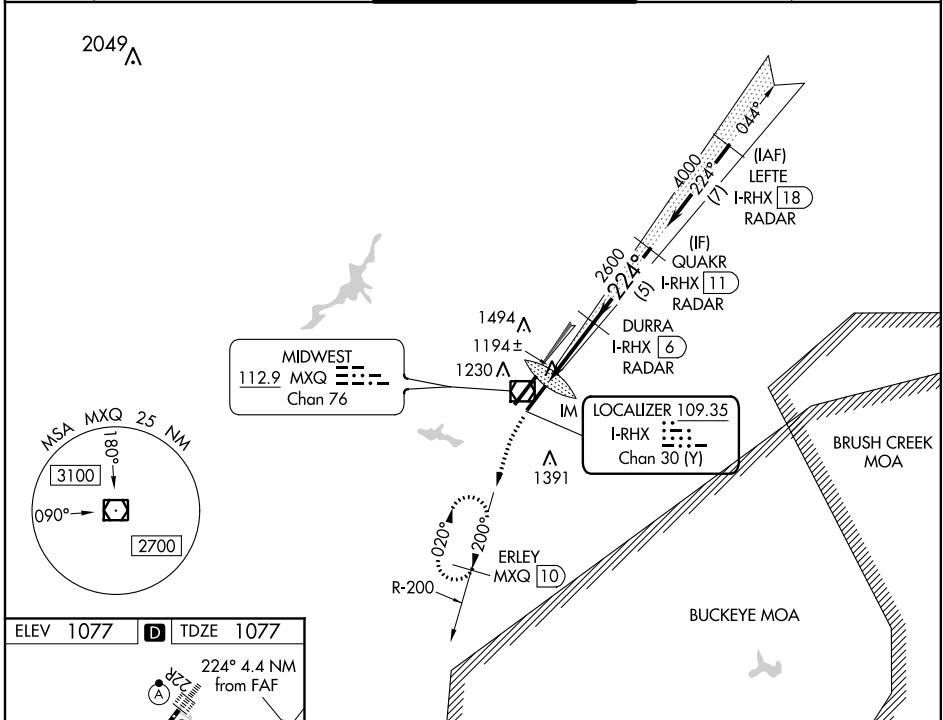
LOC/DME I-RHX 109.35 Chan 30 (Y)	APP CRS 224°	Rwy Idg 9000 TDZE 1077 Apt Elev 1077
--	------------------------	---

ILS or LOC RWY 22L

WILMINGTON AIR PARK (ILN)

DME required for missed approach. RADAR required for procedure entry.	ALSIF-2 	MISSED APPROACH: Climb to 1500 then climbing left turn to 4000 on MXQ VOR/DME R-200 to ERLEY/MXQ 10 DME and hold.
Simultaneous approach authorized. For inop ALS, increase S-LOC 22L Cats A/B visibility to RVR 5500.		

D-ATIS 124.925	COLUMBUS APP CON 118.85 269.275	WILMINGTON TOWER * 119.475 (CTAF) 0	GND CON 121.6	CLNC DEL 128.85
--------------------------	---	---	-------------------------	---------------------------



CATEGORY	A	B	C	D
S-ILS 22L	1277/18 200 (200-1/2)			
S-LOC 22L	1460/24	383 (400-1/2)	1460/35	383 (400-5/8)
CIRCLING	1540-1	463 (500-1)	1860-2 1/4 783 (800-2 1/4)	1860-2 1/2 783 (800-2 1/2)

EC-2, 07 OCT 2021 to 04 NOV 2021

EC-2, 07 OCT 2021 to 04 NOV 2021