

LOC I-ILN <b>110.7</b>	APP CRS <b>224°</b>	Rwy Idg TDZE Apt Elev	<b>10701</b> <b>1077</b> <b>1077</b>
---------------------------	------------------------	-----------------------------	--

# ILS or LOC RWY 22R

WILMINGTON AIR PARK (ILN)

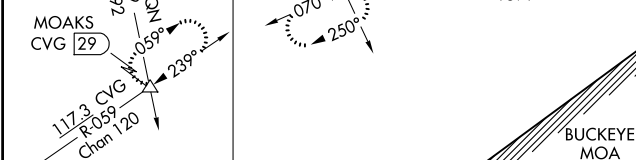
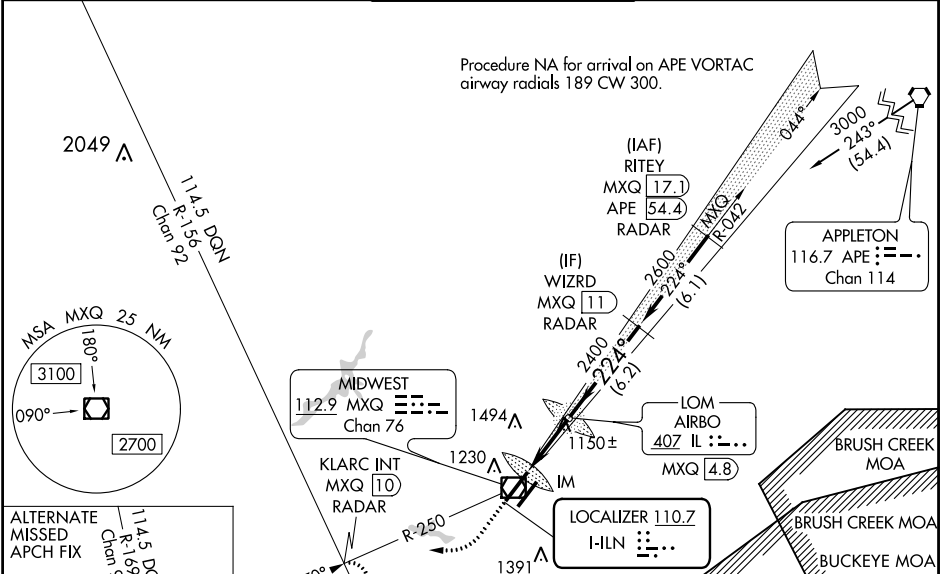
DME or RADAR required for procedure entry. ADF or DME required for LOC only.

**ALSF-2**

**MISSED APPROACH:** Climb to 1600 then climbing right turn to 3500 on MXQ VOR/DME R-250 to KLARC INT/MXQ 10 DME/RADAR and hold, continue climb-in-hold to 3500.

**Simultaneous approach authorized.** DME from MXQ VOR/DME. Simultaneous reception of I-ILN and MXQ DME required.

D-ATIS <b>124.925</b>	COLUMBUS APP CON <b>118.85 269.275</b>	WILMINGTON TOWER * <b>119.475</b> (CTAF) <b>0</b>	GND CON <b>121.6</b>	CLNC DEL <b>128.85</b>
--------------------------	---	--	-------------------------	---------------------------



ELEV 1077

TDZE 1077

224° 3.8 NM from FAF

22R

22L

221

1701 X 150  
0.3% DOWN

TWR

9800 X 150  
0.3% UP

4L

4R

4L-22R

4R-22L

TDZ/CL 22R

TDZ/CL 22L

HIRL Rwy 4R-22L

HIRL Rwy 4L-22R

Knots	60	90	120	150	180
Min:Sec	3:48	2:32	1:54	1:31	1:16

CATEGORY	A	B	C	D
S-ILS 22R	1277/18			
S-LOC 22R	1400/24	323 (400-½)	1400/26	323 (400-½)
CIRCLING	1540-1	463 (500-1)	1860-2¼ 783 (800-2¼)	1860-2½ 783 (800-2½)

EC-2, 07 OCT 2021 to 04 NOV 2021

EC-2, 07 OCT 2021 to 04 NOV 2021