

LOC I-HWM 110.7	APP CRS 044°	Rwy Idg 10701
		TDZE 1057
		Apt Elev 1077

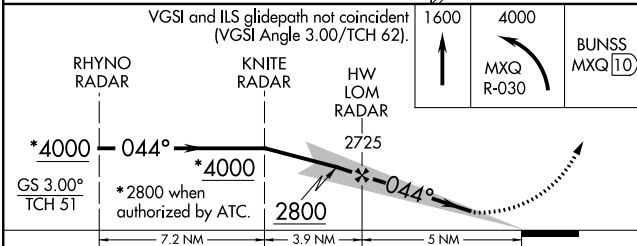
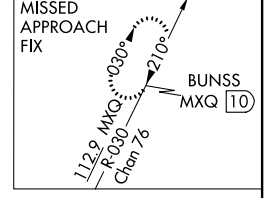
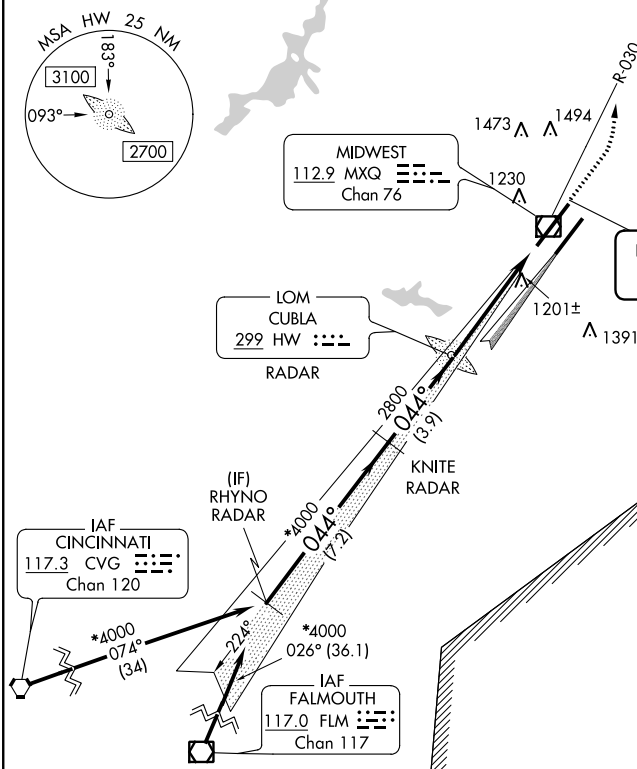
ILS or LOC RWY 4L
WILMINGTON AIR PARK (ILN)

DME required. RADAR required to define RHYNO and KNITE.

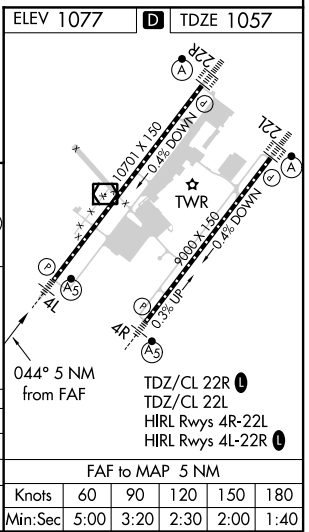
Simultaneous approach authorized. For inop ALS, increase S-LOC 4L Cats A/B visibility to RVR 5500 and Cats C/D visibility to RVR 6000. # RVR 1800 authorized with use of FD or AP or HUD to DA.

MALSR 	MISSED APPROACH: Climb to 1600 then climbing left turn to 4000 on MXQ VOR/DME R-030 to BUNSS/MXQ 10 DME and hold.
-----------	--

D-ATIS 124.925	COLUMBUS APP CON 118.85 269.275	WILMINGTON TOWER * 119.475 (CTAF)	GND CON 121.6	CLNC DEL 128.85
--------------------------	---	--	-------------------------	---------------------------



CATEGORY	A	B	C	D
S-ILS 4L #	1257/24	200 (200-½)		
S-LOC 4L	1460/24	403 (400-½)	1460/40	403 (400-¾)
CIRCLING	1540-1	463 (500-1)	1860-2¼	783 (800-2¼)
			1860-2½	783 (800-2½)



EC-2, 07 OCT 2021 to 04 NOV 2021

EC-2, 07 OCT 2021 to 04 NOV 2021

FAF to MAP 5 NM

Knots	60	90	120	150	180
Min:Sec	5:00	3:20	2:30	2:00	1:40