

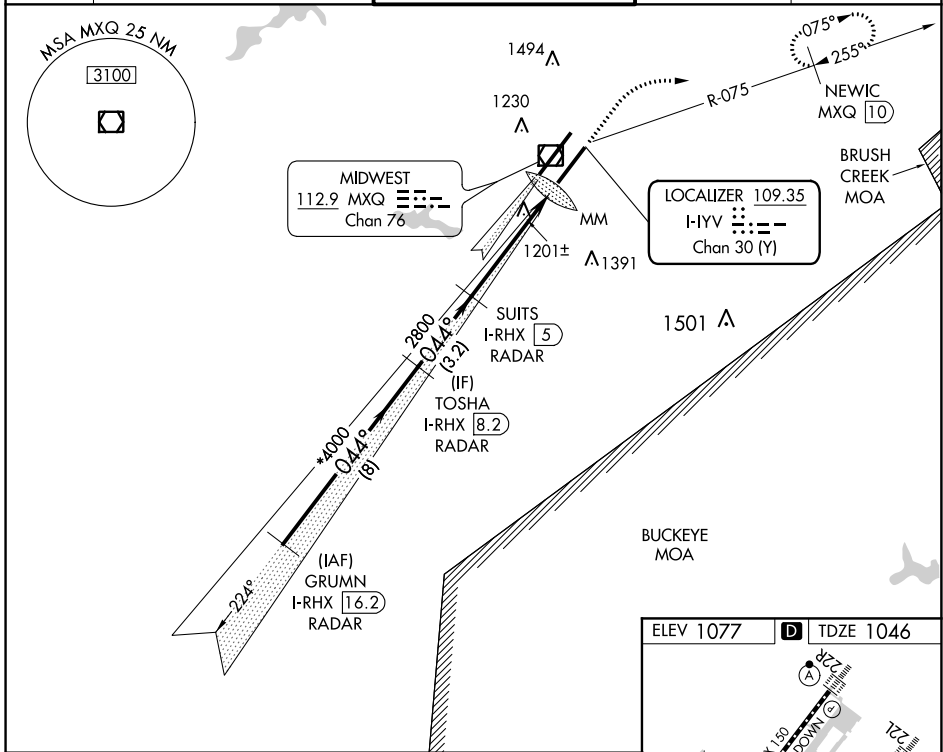
LOC/DME I-YV 109.35 Chan 30 (Y)	APP CRS 044°	Rwy Idg 9000 TDZE 1046 Apt Elev 1077
--	------------------------	---

ILS or LOC RWY 4R

WILMINGTON AIR PARK (ILN)

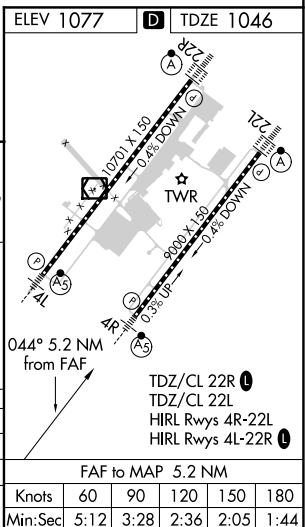
DME required for missed approach. RADAR required for procedure entry.		MALSR 	MISSED APPROACH: Climb to 1700 then climbing right turn to 4000 on MXQ VOR/DME R-075 to NEWIC/MXQ 10 DME and hold.
<p> Simultaneous approach authorized. For inop ALS, increase S-ILS 4R all Cats visibility to RVR 4500, increase S-LOC 4R Cats A/B visibility to RVR 5500, and S-LOC Cats C/D visibility to RVR 6000. # RVR 1800 authorized with the use of FD or AP or HUD to DA.</p>			

D-ATIS 124.925	COLUMBUS APP CON 118.85 269.275	WILMINGTON TOWER ★ 119.475 (CTAF) 0	GND CON 121.6	CLNC DEL 128.85
--------------------------	---	---	-------------------------	---------------------------



VGSI and ILS glidepath not coincident (VGSI Angle 3.00/TCH 71).

GRUMN I-RHX (16.2) RADAR	TOSHA I-RHX (8.2) RADAR	SUITS I-RHX (5) RADAR	I-RHX (0.2)
*4000	*4000	2800	MM
GS 3.00° TCH 55	*2800 when authorized by ATC.		
8 NM	3.2 NM	4.8 NM	0.4
CATEGORY	A	B	C
S-ILS 4R #	1246/24 200 (200-½)		
S-LOC 4R	1460/24 414 (400-½)	1460/40 414 (400-¾)	
CIRCLING	1540-1 463 (500-1)	1860-2¼ 783 (800-2¼)	1860-2½ 783 (800-2½)



EC-2, 07 OCT 2021 to 04 NOV 2021

EC-2, 07 OCT 2021 to 04 NOV 2021

FAF to MAP 5.2 NM	Knots	60	90	120	150	180
	Min:Sec	5:12	3:28	2:36	2:05	1:44