

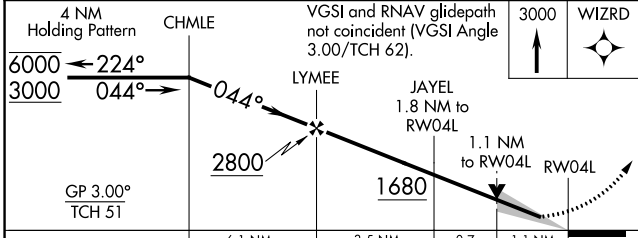
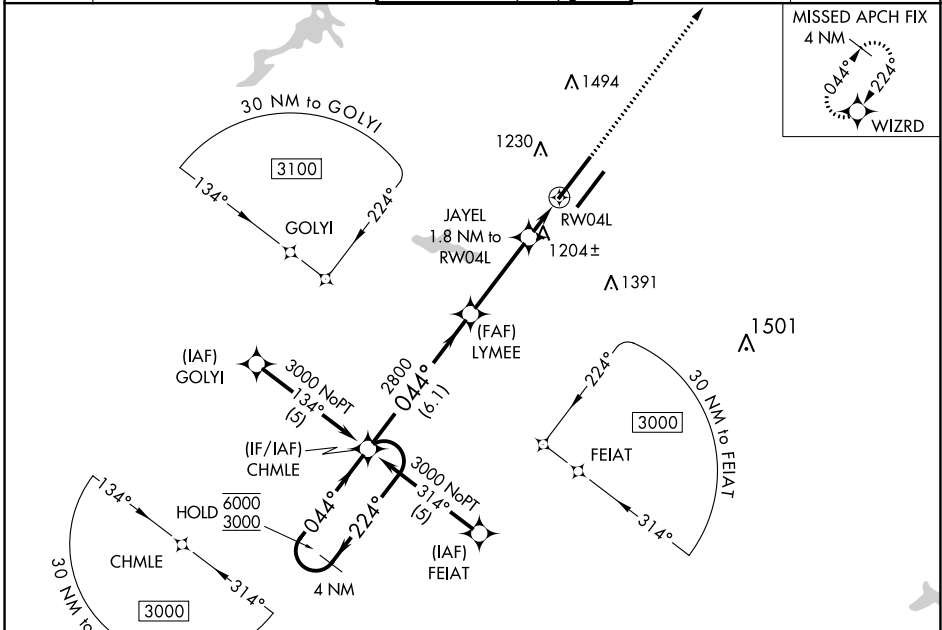
WAAS CH 62914 W04A	APP CRS 044°	Rwy Idg 10701 TDZE 1057 Apt Elev 1077
--	------------------------	--

RNAV (GPS) RWY 4L

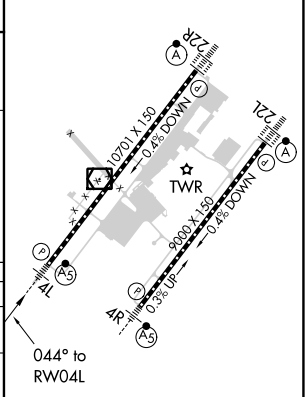
WILMINGTON AIR PARK (ILN)

RNP APCH.	MALSR 	MISSED APPROACH: Climb to 3000 direct WIZRD and hold.
<p>⚠ For uncompensated Baro-VNAV systems, LNAV/VNAV NA below -17°C or above 54°C. ⚠ For inop ALS, increase LNAV Cats A/B visibility to RVR 5500 and LNAV Cats C/D visibility to RVR 6000. *1800 RVR authorized with use of FD or AP or HUD to DA.</p>		

D-ATIS 124.925	COLUMBUS APP CON 118.85 269.275	WILMINGTON TOWER ★ 119.475 (CTAF) 0	GND CON 121.6	CLNC DEL 128.85
--------------------------	---	---	-------------------------	---------------------------



ELEV 1077	D TDZE 1057
-----------	--------------------



CATEGORY	A	B	C	D
LPV DA *	1257/24		200 (200-½)	
LNAV/VNAV DA	1505/45		448 (500-¾)	
LNAV MDA	1460/24 403 (400-½)		1460/40 403 (400-¾)	
C CIRCLING	1540-1 463 (500-1)		1860-2¼ 783 (800-2¼) 1860-2½ 783 (800-2½)	

TDZ/CL 22R 0
TDZ/CL 22L
HIRL Rwy 4R-22L 0
HIRL Rwy 4L-22R 0

EC-2, 07 OCT 2021 to 04 NOV 2021

EC-2, 07 OCT 2021 to 04 NOV 2021