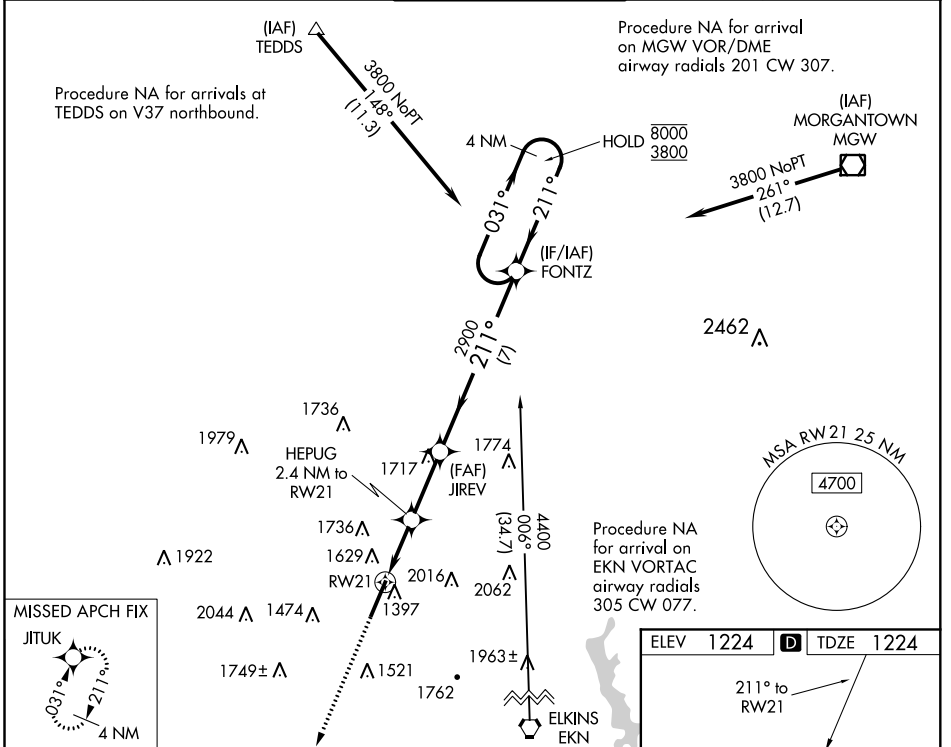


WAAS CH 82504 W21A	APP CRS 211°	Rwy Idg TDZE Apt Elev	7130 1224 1224
--	------------------------	-----------------------------	---

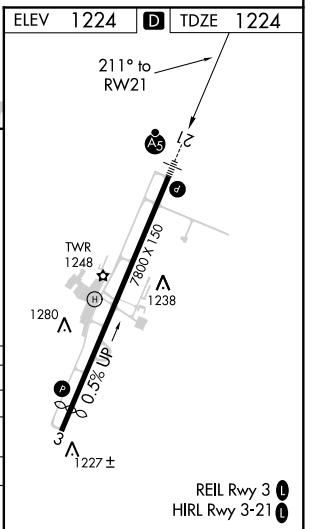
RNAV (GPS) RWY 21

NORTH CENTRAL WEST VIRGINIA (CKB)

RNP APCH.		MALSR		MISSED APPROACH: Climb to 3900 direct JITUK and hold.	
<p>▼ For uncompensated Baro-VNAV systems, LNAV/VNAV NA below -16°C or above 54°C. For inop ALS, increase LNAV Cats C and D visibility to 1 1/2 SM.</p>					
ATIS 127.825	CLARKSBURG APP CON ★ 121.15 284.65	CLARKSBURG TOWER ★ 126.7 (CTAF) 257.925	GND CON 121.9	UNICOM 123.0	



3900	JITUK	HEPUG 2.4 NM to RW21	JIREV 2900	FONTZ 4 NM Holding Pattern
MISSED APCH FIX JITUK				
*LNAV only.				
<p>1.6 NM to RW21, 0.8 NM, 2.7 NM, 7 NM</p> <p>211°, 031°, 211°, 8000, 3800</p> <p>GP 3.00° TCH 60</p>				
CATEGORY	A	B	C	D
LPV DA	1424/24		200 (200-1/2)	
LNAV/VNAV DA	1786-1 3/8		562 (600-1 3/8)	
LNAV MDA	1800/24 576 (600-1/2)		1800-1 1/4 576 (600-1 1/4)	
CIRCLING	1940-1 716 (800-1)	2040-1 1/4 816 (900-1 1/4)	2320-3	1096 (1100-3)



NE-4, 07 OCT 2021 to 04 NOV 2021

NE-4, 07 OCT 2021 to 04 NOV 2021