


WAAS CH 45599 W17A	APP CRS 176°	Rwy ldg TDZE 207 Apt Elev 208	5500
--	------------------------	---	-------------

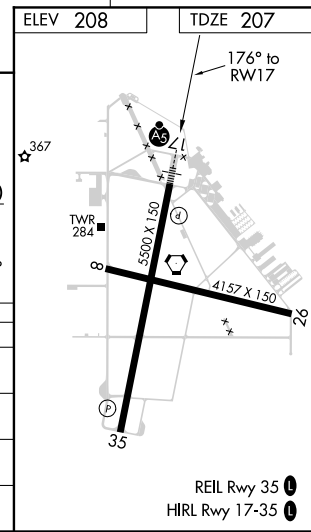
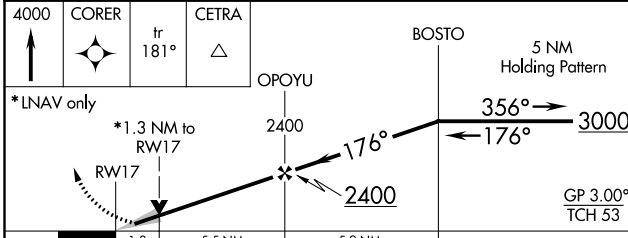
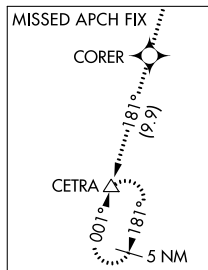
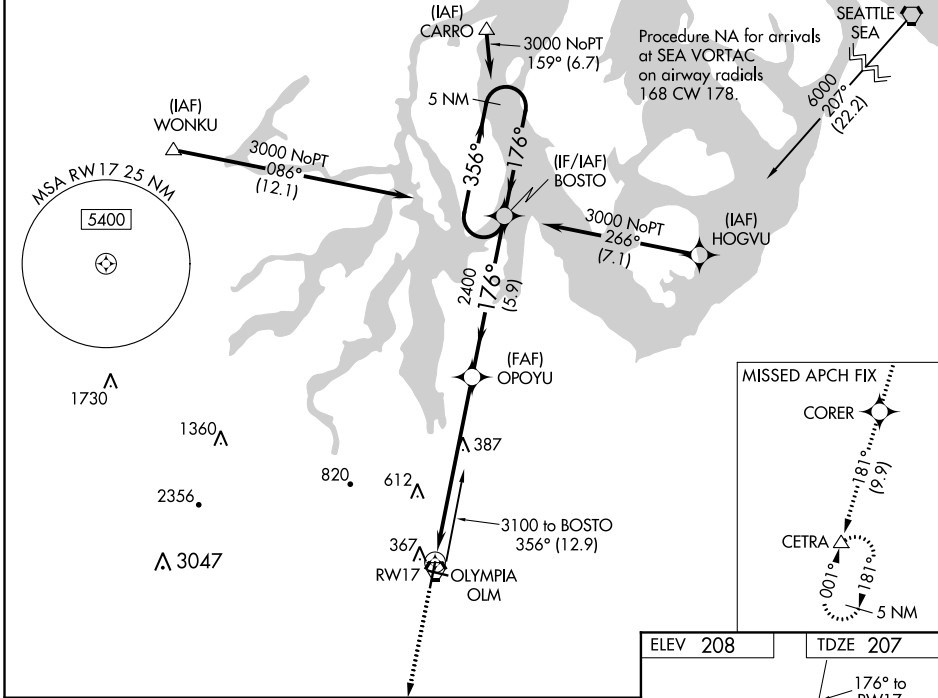
RNAV (GPS) RWY 17

OLYMPIA RGNL (OLM)

⚠ For uncompensated Baro-VNAV systems, LNAV/VNAV NA below -9°C (16°F) or above 54°C (130°F). DME/DME RNP-0.3 NA. For inop ALS; increase LNAV/VNAV visibility all Cats to 1½ SM. Increase LNAV Cats C/D to 1¾ SM.

MALSR  MISSED APPROACH: Climb to 4000 direct CORER and on track 181° to CETRA and hold, continue climb-in-hold to 4000.

ATIS ★ 135.725	SEATTLE APP CON 121.1 290.9	OLYMPIA TOWER ★ 124.4 (CTAF) 254.25	GND CON 121.6	UNICOM 122.95
--------------------------	---------------------------------------	---	-------------------------	-------------------------



CATEGORY	A	B	C	D
LPV DA		407-½	200 (200-½)	
LNAV/VNAV DA		629-¾	422 (500-¾)	
LNAV MDA	680-½	473 (500-½)	680-1	473 (500-1)
CIRCLING	720-1 512 (600-1)	860-1 652 (700-1)	1020-2½ 812 (900-2½)	1020-2¾ 812 (900-2¾)

NW-1, 07 OCT 2021 to 04 NOV 2021

NW-1, 07 OCT 2021 to 04 NOV 2021