

VORTAC OLM 113.4 Chan 81	APP CRS 356°	Rwy Idg 5500 TDZE 208 Apt Elev 208
--	------------------------	---

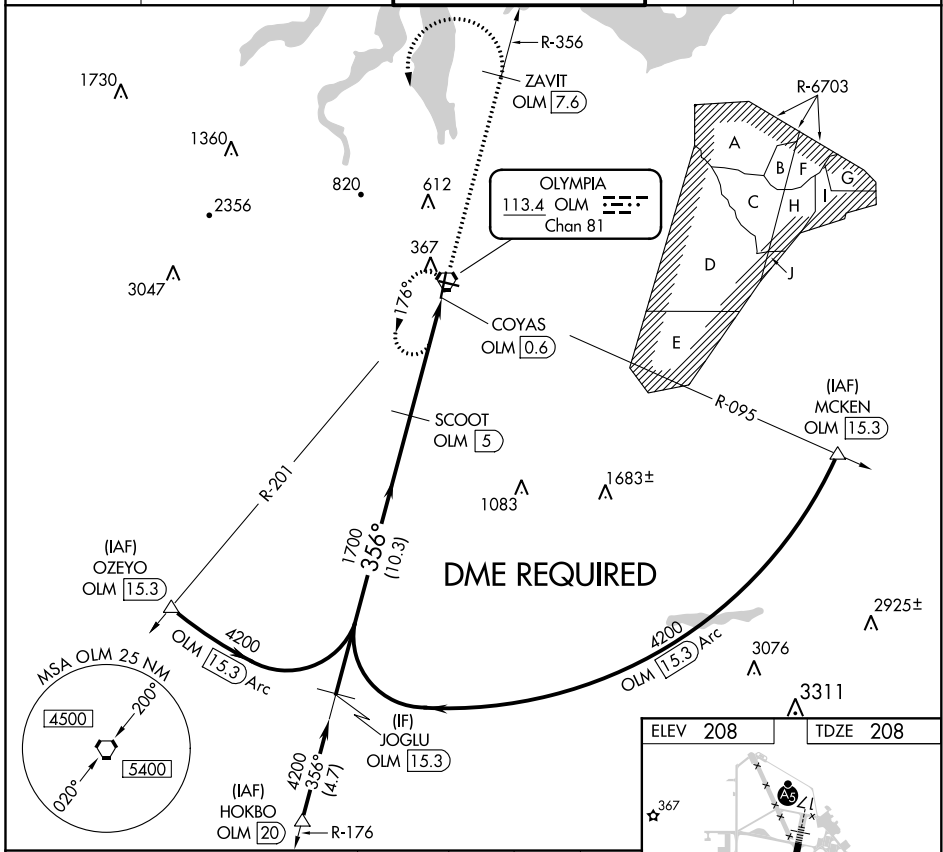
VOR RWY 35

OLYMPIA RGNL (OLM)

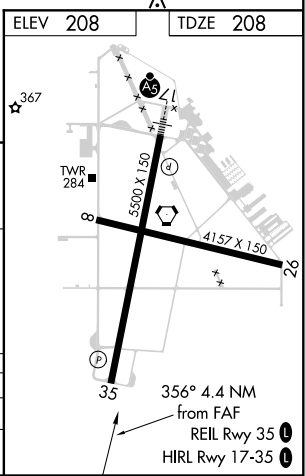
▼ Rwy 35 helicopter visibility reduction below ¾ SM NA.
▲ DME required.

MISSED APPROACH: Climb to 4000 on OLM VORTAC R-356 to ZAVIT/OLM 7.6 DME then climbing left turn direct OLM VORTAC and hold.

ATIS* 135.725	SEATTLE APP CON 121.1 290.9	OLYMPIA TOWER* 124.4 (CTAF) 254.25	GND CON 121.6	UNICOM 122.95
-------------------------	---------------------------------------	--	-------------------------	-------------------------



CATEGORY	A		B		C		D	
	840-1		632 (700-1)		840-1¾		632 (700-1¾)	
CIRCLING	840-1 632 (700-1)		860-1 652 (700-1)		1020-2½ 812 (900-2½)		1020-2¾ 812 (900-2¾)	



NW-1, 07 OCT 2021 to 04 NOV 2021

NW-1, 07 OCT 2021 to 04 NOV 2021