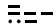


# YELM FIVE DEPARTURE

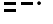
AL-645 (FAA)


OLYMPIA RGNL (OLM)  
OLYMPIA, WASHINGTON

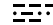
**TATOOSH**  
112.2 TOU   
Chan 59  
N48°17.99'-W124°37.62'  
L-1, H-1

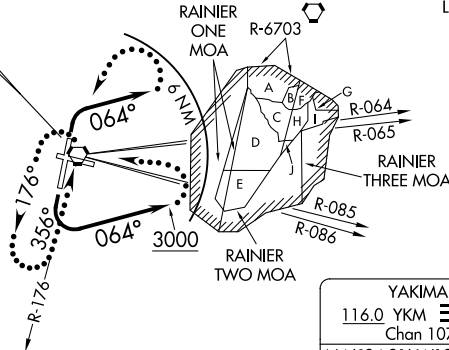
**TOP ALTITUDE:**  
**3000**

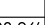
**OLYMPIA TOWER\***  
124.4 (CTAF) 254.25  
SEATTLE DEP CON  
121.1 290.9

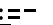
**PAINÉ**  
110.6 PAE   
Chan 43  
N47°55.19'-W122°16.67'  
L-1, H-1


**SEATTLE**  
116.8 SEA   
Chan 115  
N47°26.12'-W122°18.58'  
L-1, H-1


**OLYMPIA**  
113.4 OLM   
Chan 81  
N46°58.30'-W122°54.11'  
L-1, H-1



**HOQUIAM**  
117.7 HQM   
Chan 124  
N46°56.82'-W124°08.96'  
L-1, H-1

**YAKIMA**  
116.0 YKM   
Chan 107  
N46°34.21'-W120°26.68'  
L-13, H-1

**NEWBERG**  
117.4 UBG   
Chan 121  
N45°21.19'-W122°58.69'  
L-1, H-1

**BATTLE GROUND**  
116.0 BTG   
Chan 113  
N45°44.87'-W122°35.49'  
L-1, H-1

### TAKEOFF MINIMUMS

Rwys 8, 26: NA- ATC.

Rwy 17: 300-2 with minimum climb of 210' per NM to 2200 or standard with minimum climb of 720' per NM to 500.

Rwy 35: Standard.

NOTE: RADAR required.

NOTE: Chart not to scale.



### DEPARTURE ROUTE DESCRIPTION

TAKEOFF RUNWAY 17: Turn left, climb heading 064° to 3000, thence. . .

TAKEOFF RUNWAY 35: Turn right, climb heading 064°, maintain 3000 thence. . .

. . . for RADAR vectors on course and filed altitude.

LOST COMMUNICATIONS: If no contact with ATC within 6 NM of OLM VORTAC, or 2 minutes after departure for non-DME aircraft, turn left direct OLM VORTAC, continue climb in OLM VORTAC holding pattern to cross OLM VORTAC at or above R-086 CW R-064 4200 feet; R-065 CW R-085 7300 feet, continue climb on assigned route.

# YELM FIVE DEPARTURE