

BLUEGRASS FOUR DEPARTURE

AL-655 (FAA)

COVINGTON, KENTUCKY

D-ATIS DEP 135.3
 CLNC DEL
 127.175
 GND CON
 121.7
 CINCINNATI TOWER
 118.3 360.85 (RWYS 18C/36C, 9/27)
 118.975 360.85 (RWY 18L/36R)
 133.325 360.85 (RWY 18R/36L)
 CINCINNATI DEP CON
 126.65 254.25 (001°-180°)
 128.7 254.25 (181°-360°)

**TOP ALTITUDE:
 (JETS) 6000/(PROPS) 4000**

CINCINNATI
 117.3 CVG
 Chan 120
 N39°00.96'
 W84°42.20'

LOCALIZER 110.75
 I-VAC
 Chan 44 (Y)
 N39°04.42'-W84°41.08'

NICID
 I-CVG [0.6]
 N39°04.69'
 W84°40.11'

LOCALIZER 109.9
 I-CVG
 Chan 36
 N39°04.06'-W84°40.12'

LOCALIZER 110.15
 I-CIZ
 Chan 38(Y)
 N39°01.53'-W84°38.81'

FALMOUTH
 117.0 FLM
 Chan 117

LEXINGTON
 112.6 HYK
 Chan 73
 N37°57.98'-W84°28.35'
 L-26-27, H-10

R-3403B

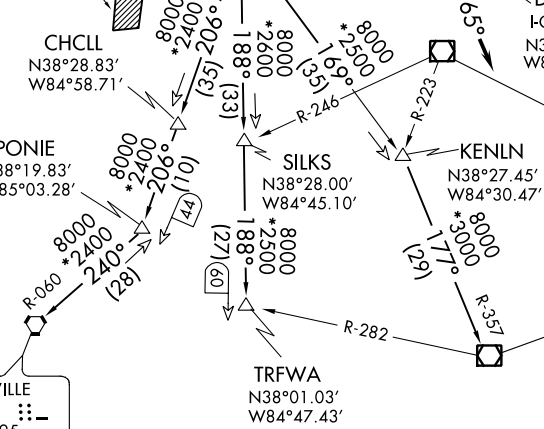
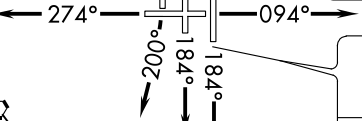
R-3403A

CHCLL
 N38°28.83'
 W84°58.71'

PONIE
 N38°19.83'
 W85°03.28'

LOUISVILLE
 114.8 IUU
 Chan 95
 N38°06.21'
 W85°34.65'

L-26-27, H-5-10



TAKEOFF MINIMUMS

Rwys 9, 18L/C/R, 27, 36L/C/R: Standard.

- NOTE: DME required Rwy 18L/36L/36C.
- NOTE: DME required for Louisville transition.
- NOTE: RADAR required.
- NOTE: TURBOJETS accelerate to 250K until reaching 10000 MSL, if unable, advise ATC.

(NARRATIVE ON FOLLOWING PAGE)

NOTE: Chart not to scale.

BLUEGRASS FOUR DEPARTURE

COVINGTON, KENTUCKY

SE-1, 07 OCT 2021 to 04 NOV 2021

SE-1, 07 OCT 2021 to 04 NOV 2021