

(CEGRM.CEGRM5) 20198
CEGRM FIVE ARRIVAL (RNAV)

CINCINNATI/NORTHERN KENTUCKY INTL (CVG)
 AL-655 (FAA) COVINGTON, KENTUCKY

CINCINNATI APP CON
 119.7 363.15 (090°-269°)
 123.875 363.15 (270°-089°)
 D-ATIS ARR 134.375

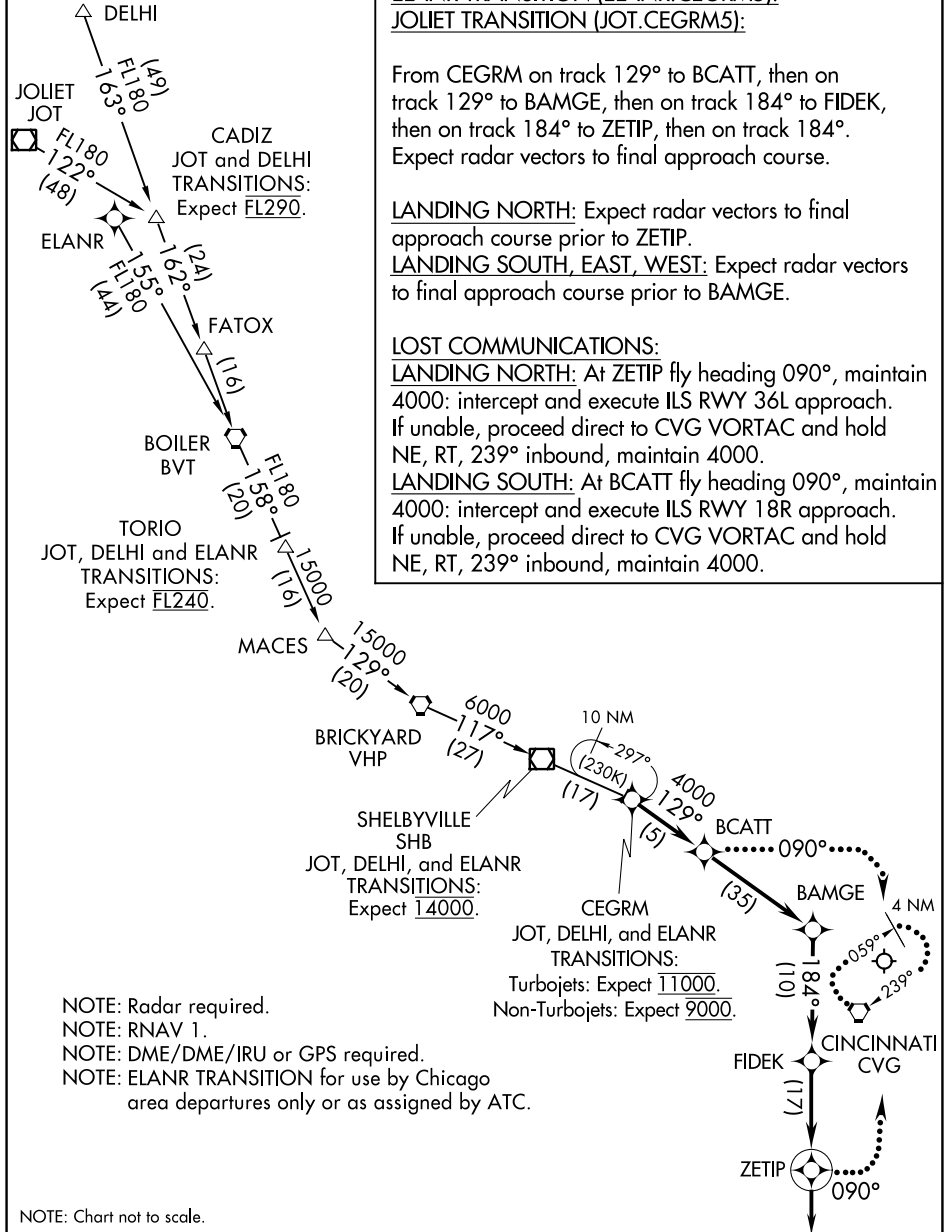
ARRIVAL ROUTE DESCRIPTION

DELHI TRANSITION (DELHI.CEGRM5):
ELANR TRANSITION (ELANR.CEGRM5):
JOLIET TRANSITION (JOT.CEGRM5):

From CEGRM on track 129° to BCATT, then on track 129° to BAMGE, then on track 184° to FIDEK, then on track 184° to ZETIP, then on track 184°.
 Expect radar vectors to final approach course.

LANDING NORTH: Expect radar vectors to final approach course prior to ZETIP.
LANDING SOUTH, EAST, WEST: Expect radar vectors to final approach course prior to BAMGE.

LOST COMMUNICATIONS:
LANDING NORTH: At ZETIP fly heading 090°, maintain 4000: intercept and execute ILS RWY 36L approach. If unable, proceed direct to CVG VORTAC and hold NE, RT, 239° inbound, maintain 4000.
LANDING SOUTH: At BCATT fly heading 090°, maintain 4000: intercept and execute ILS RWY 18R approach. If unable, proceed direct to CVG VORTAC and hold NE, RT, 239° inbound, maintain 4000.



NOTE: Radar required.
 NOTE: RNAV 1.
 NOTE: DME/DME/IRU or GPS required.
 NOTE: ELANR TRANSITION for use by Chicago area departures only or as assigned by ATC.

NOTE: Chart not to scale.

CEGRM FIVE ARRIVAL (RNAV)
(CEGRM.CEGRM5) 29MAR18

COVINGTON, KENTUCKY
 CINCINNATI/NORTHERN KENTUCKY INTL (CVG)

SE-1, 07 OCT 2021 to 04 NOV 2021

SE-1, 07 OCT 2021 to 04 NOV 2021