

CHCLL FIVE DEPARTURE (RNAV)

AL-655 (FAA)

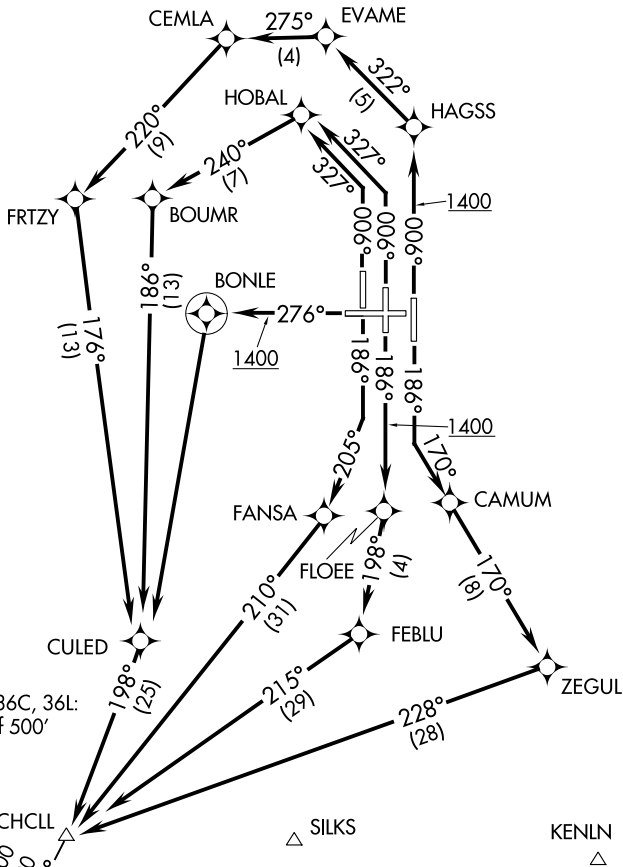
COVINGTON, KENTUCKY

D-ATIS
135.3
CINCINNATI TOWER
118.3 (RWYS 18C/36C, 9/27)
118.975 360.85 (RWY 18L/36R)
133.325 (RWY 18R/36L)
GND CON
121.7
CLNC DEL
127.175
CINCINNATI DEP CON
126.65 254.25 (001°-180°)
128.7 254.25 (181°-360°)

TOP ALTITUDE:
(JETS/PROPS)
6000 4000

TAKEOFF MINIMUMS:

Rwy 9: NA-ATC.
Rwys 18L, 18C, 18R, 27, 36R, 36C, 36L:
Standard with minimum climb of 500'
per NM to 1400.



- NOTE: If unable to accept climb rates, advise ATC on initial contact.
- NOTE: DME/DME/IRU or GPS required.
- NOTE: Radar required.
- NOTE: RNAV 1.
- NOTE: Transponder code will be issued via PDC or Cincinnati CLNC DEL.
- NOTE: Accelerate to 250K, if unable, advise ATC.

(NARRATIVE ON FOLLOWING PAGE)

NOTE: Chart not to scale.

CHCLL FIVE DEPARTURE (RNAV)

COVINGTON, KENTUCKY

SE-1, 07 OCT 2021 to 04 NOV 2021

SE-1, 07 OCT 2021 to 04 NOV 2021