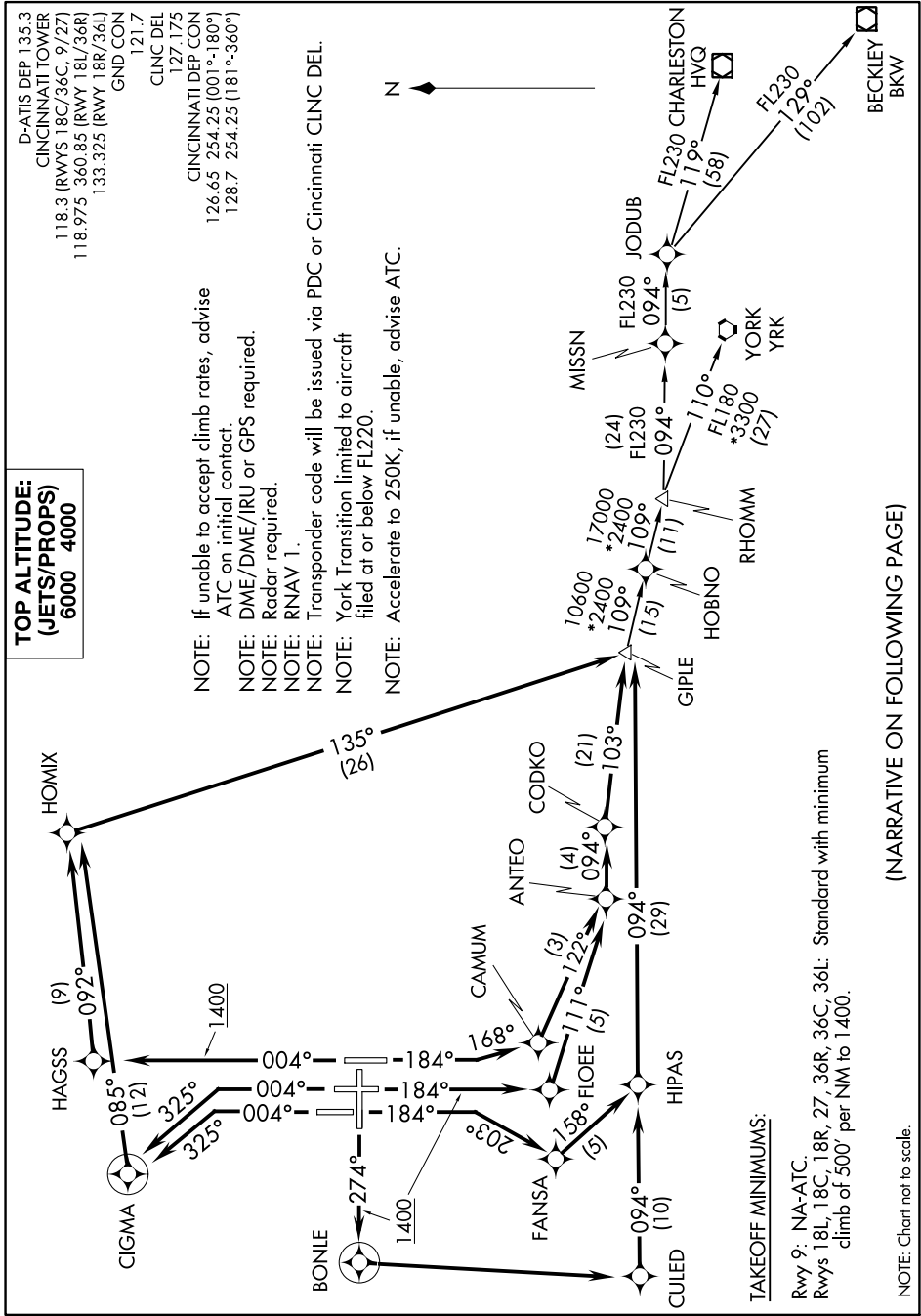


GIPLE SIX DEPARTURE (RNAV)

SE-1, 07 OCT 2021 to 04 NOV 2021



**TOP ALTITUDE:
(JETS/PROPS)
6000 4000**

- NOTE: If unable to accept climb rates, advise ATC on initial contact.
- NOTE: DME/DME/IRU or GPS required.
- NOTE: Radar required.
- NOTE: RNAV 1.
- NOTE: Transponder code will be issued via PDC or Cincinnati CINC DEL. York Transition limited to aircraft filed at or below FL220.
- NOTE: Accelerate to 250K, if unable, advise ATC.



TAKEOFF MINIMUMS:
Rwy 9: NA-ATC.
Rwys 18L, 18C, 18R, 27, 36R, 36L: Standard with minimum climb of 500' per NM to 1400.

NOTE: Chart not to scale.

(NARRATIVE ON FOLLOWING PAGE)

SE-1, 07 OCT 2021 to 04 NOV 2021