

HAGOL FOUR DEPARTURE (RNAV)

AL-655 (FAA)

COVINGTON, KENTUCKY

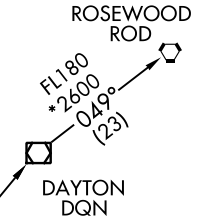
D-ATIS DEP 135.3
 CLNC DEL
 127.175
 CINCINNATI TOWER
 118.3 (RWYS 18C/36C, 9/27)
 118.975 360.85 (RWY 18L/36R)
 133.325 (RWY 18R/36L)
 GND CON
 121.7
 CINCINNATI DEP CON
 126.65 254.25 (001°-180°)
 128.7 254.25 (181°-360°)

NOTE: If unable to accept climb rates, advise ATC on initial contact.
 NOTE: DME/DME/IRU or GPS Required.
 NOTE: Radar required.
 NOTE: RNAV 1.
 NOTE: Accelerate to 250 KIAS, if unable, advise ATC.
 NOTE: Transponder code will be issued via PDC or Cincinnati CLNC DEL.

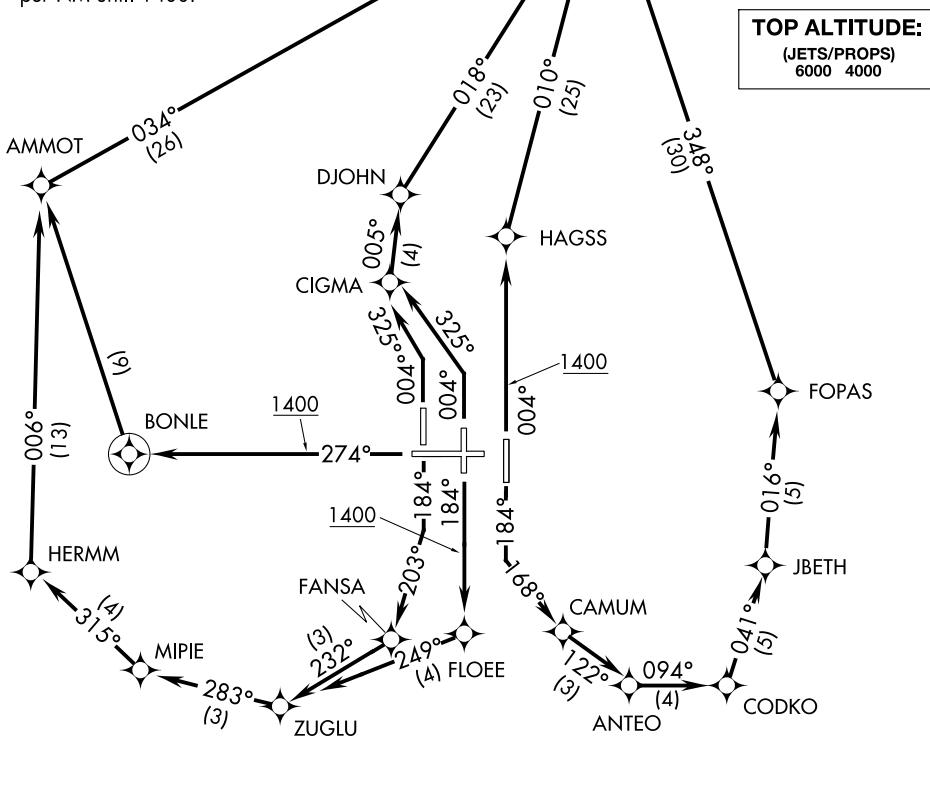
JBNCH

TAKEOFF MINIMUMS:

Rwy 9: NA-ATC.
 Rwys 18L, 18C, 18R, 27, 36R, 36C, 36L:
 Standard with minimum climb of 500' per NM until 1400.



TOP ALTITUDE:
 (JETS/PROPS)
 6000 4000



SE-1, 07 OCT 2021 to 04 NOV 2021

SE-1, 07 OCT 2021 to 04 NOV 2021

NOTE: Chart not to scale.

(NARRATIVE ON FOLLOWING PAGE)