

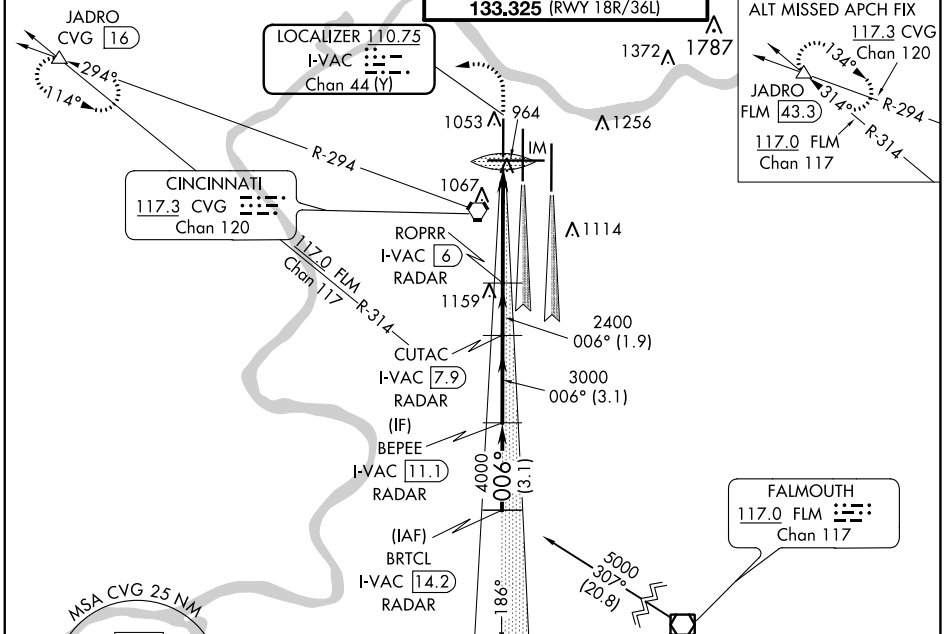
LOC/DME I-VAC 110.75 Chan 44 (Y)	APP CRS 006°	Rwy Idg TDZE Apt Elev 8000 873 896
--	------------------------	--

ILS RWY 36L (CAT II)
CINCINNATI/NORTHERN KENTUCKY INTL (CVG)

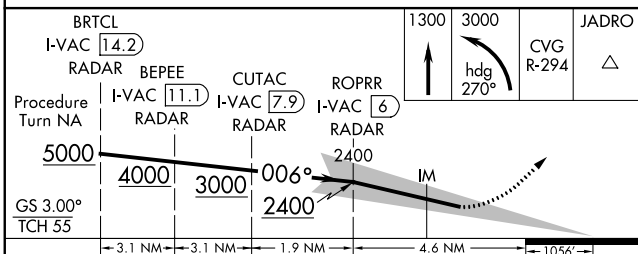
Simultaneous approach authorized with Rwy 36C and 36R. DME required.

MISSED APPROACH: Climb to 1300 then climbing left turn to 3000 via heading 270° and CVG R-294 to JADRO/CVG 16 DME and hold.

D-ATIS ARR 134.375 DEP 135.3	CINCINNATI APP CON 119.7 363.15 (090°-269°) 123.875 363.15 (270°-089°)	CINCINNATI TOWER 118.975 360.85 (RWY 18L/36R) 118.3 (RWYS 18C/36C, 09/27) 133.325 (RWY 18R/36L)	GND CON 121.7	CLNC DEL 127.175
---	--	---	-------------------------	----------------------------



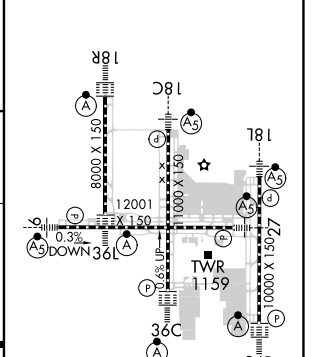
DME or RADAR REQUIRED



CATEGORY	S-ILS-36L	A	B	C	D
		RA 98/12 100 DA 973			

CATEGORY II ILS - SPECIAL AIRCREW & AIRCRAFT CERTIFICATION REQUIRED

ELEV	896	TDZE	873
------	-----	------	-----



HIRL all Rwys
TDZ/CL all Rwys except 27

SE-1, 07 OCT 2021 to 04 NOV 2021

SE-1, 07 OCT 2021 to 04 NOV 2021