

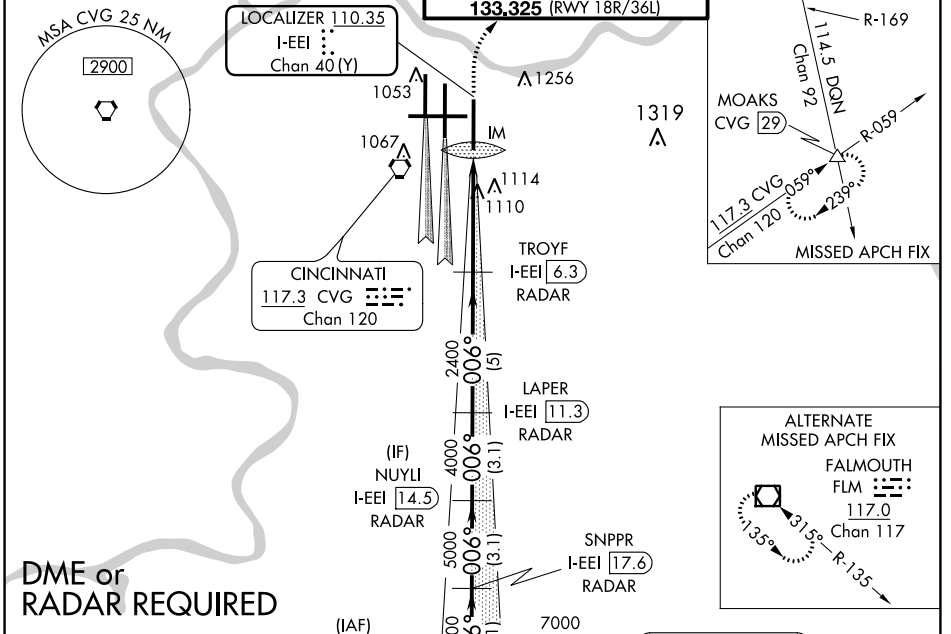
LOC/DME I-EEI <b>110.35</b> Chan 40 (Y)	APP CRS <b>006°</b>	Rwy Idg <b>10000</b> TDZE <b>896</b> Apt Elev <b>896</b>
---	------------------------	--

# ILS RWY 36R (CAT II & III)

CINCINNATI/NORTHERN KENTUCKY INTL (CVG)

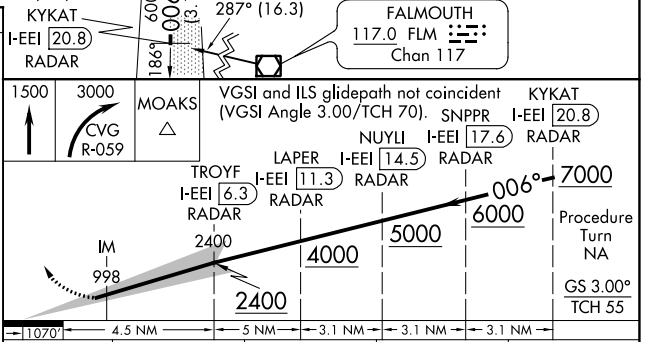
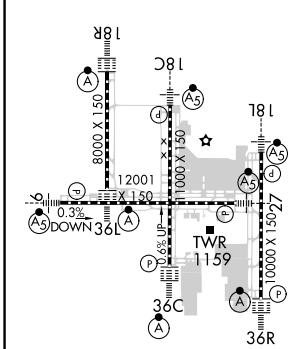
	ALSIF-2 	MISSED APPROACH: Climb to 1500 then climbing right turn to 3000 via CVG R-059 to MOAKS Int/ CVG 29 DME and hold.

D-ATIS ARR <b>134.375</b> DEP <b>135.3</b>	CINCINNATI APP CON <b>119.7 363.15</b> (090°-269°) <b>123.875 363.15</b> (270°-089°)	CINCINNATI TOWER <b>118.975 360.85</b> (RWY 18L/36R) <b>118.3</b> (RWYS 18C/36C, 09/27) <b>133.325</b> (RWY 18R/36L)	GND CON <b>121.7</b>	CLNC DEL <b>127.175</b>
---	--	---	-------------------------	----------------------------



**DME or RADAR REQUIRED**

ELEV <b>896</b>	<b>D</b>	TDZE <b>896</b>
-----------------	----------	-----------------



CATEGORY	A	B	C	D
S-ILS 36R	CAT II RA 98/12 100 DA 996			
S-ILS 36R	CAT IIIa RVR 07			
S-ILS 36R	CAT IIIb RVR 06			
S-ILS 36R	CAT IIIc NA			

## CATEGORY II & III ILS - SPECIAL AIRCREW & AIRCRAFT CERTIFICATION REQUIRED

SE-1, 07 OCT 2021 to 04 NOV 2021

SE-1, 07 OCT 2021 to 04 NOV 2021