

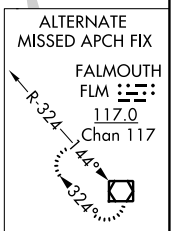
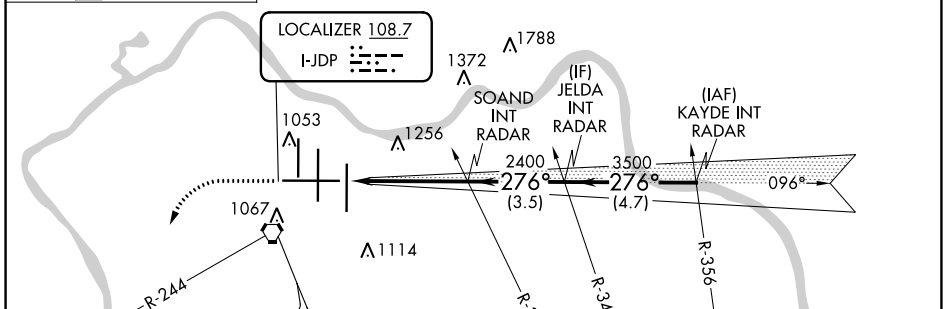
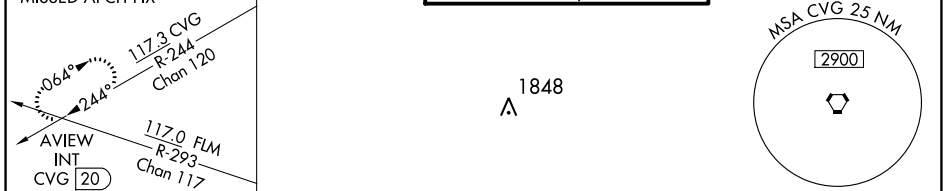
LOC I-JDP 108.7	APP CRS 276°	Rwy Idg 12001
		TDZE 875
		Apt Elev 896

ILS or LOC RWY 27

CINCINNATI/NORTHERN KENTUCKY INTL (CVG)

RADAR required for procedure entry.		MALSR 	MISSED APPROACH: Climb to 2000 then climbing left turn to 3000 on heading 230° and CVG R-244 to AVIEW INT/CVG 20 DME and hold.
** RVR 1800 authorized with use of FD or AP or HUD to DA.			

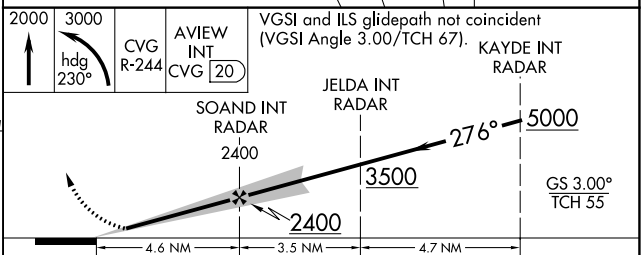
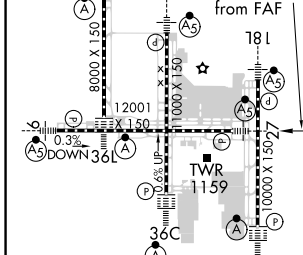
D-ATIS ARR 134.375 DEP 135.3	CINCINNATI APP CON 119.7 363.15 (090°-269°) 123.875 363.15 (270°-089°)	CINCINNATI TOWER 118.975 360.85 (Rwy 18L/36R) 118.3 (Rwys 18C/36C, 09/27) 133.325 (Rwy 18R/36L)	GND CON 121.7	CLNC DEL 127.175
---	--	---	-------------------------	----------------------------



SE-1, 07 OCT 2021 to 04 NOV 2021

SE-1, 07 OCT 2021 to 04 NOV 2021

ELEV 896	D	TDZE 875
----------	----------	----------



CATEGORY	A	B	C	D
S-ILS 27 **	1075/24 200 (200-½)			
S-LOC 27	1420/24	545 (600-½)	1420/60	545 (600-1¼)
<input checked="" type="checkbox"/> CIRCLING	1460-1	564 (600-1)	1560-1¾ 664 (700-1¾)	1560-2 664 (700-2)