

LOC/DME I-URN <b>111.9</b> Chan <b>56</b>	APP CRS <b>094°</b>	Rwy Idg <b>12001</b> TDZE <b>883</b> Apt Elev <b>896</b>
---	------------------------	--

# ILS or LOC RWY 9

## CINCINNATI/NORTHERN KENTUCKY INTL (CVG)

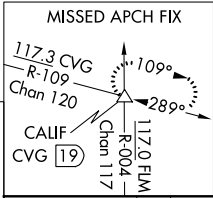
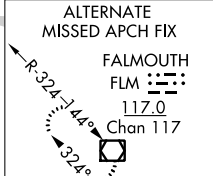
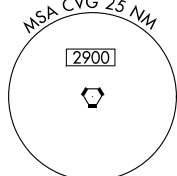
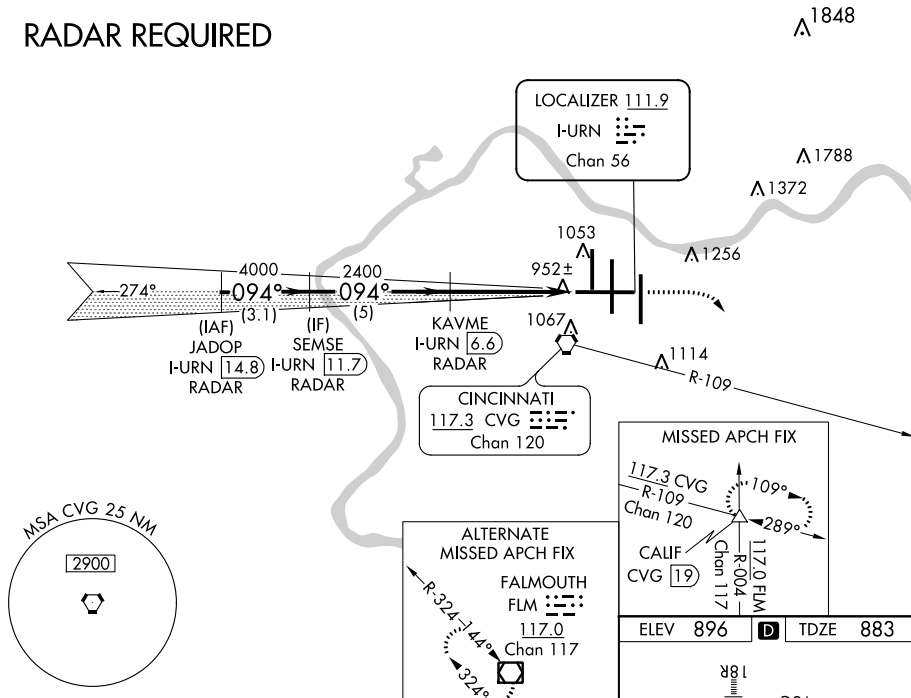
**⚠** For inoperative MALSR, increase S-LOC 9 Cat D visibility to RVR 5000. DME or radar required.



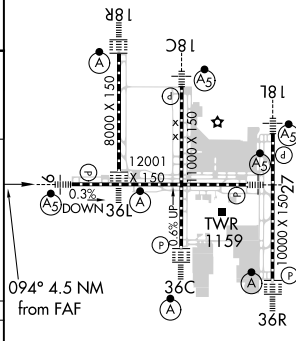
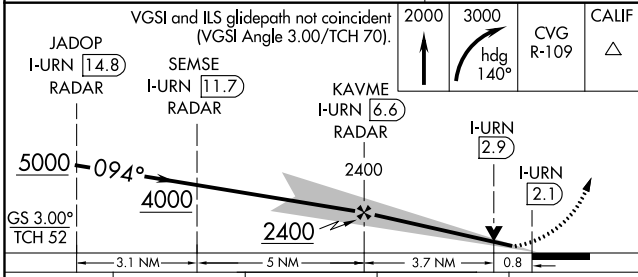
**MISSED APPROACH:** Climb to 2000 then climbing right turn to 3000 via heading 140° and CVG R-109 to CALIF INT/19 DME and hold.

D-ATIS ARR <b>134.375</b> DEP <b>135.3</b>	CINCINNATI APP CON <b>119.7 363.15</b> (090°-269°) <b>123.875 363.15</b> (270°-089°)	CINCINNATI TOWER <b>118.975 360.85</b> (RWY 18L/36R) <b>118.3</b> (RWYS 18C/36C, 09/27) <b>133.325</b> (RWY 18R/36L)	GND CON <b>121.7</b>	CLNC DEL <b>127.175</b>
---	--	---	-------------------------	----------------------------

### RADAR REQUIRED



ELEV 896	TDZE 883
----------	----------



GS 3.00° TCH 52	3.1 NM	5 NM	3.7 NM	0.8 NM
CATEGORY	A	B	C	D
S-ILS 9	1083/18		200 (200-½)	
S-LOC 9	1220/24		337 (400-½)	
			1220/40	
			337 (400-¾)	
CIRCLING	1460-1 564 (600-1)		1560-1¾ 664 (700-1¾)	
			1560-2 664 (700-2)	

HRL all Rwy's TDZ/CL all Rwy's except 27					
FAF to MAP 4.5 NM					
Knots	60	90	120	150	180
Min:Sec	4:30	3:00	2:15	1:48	1:30

SE-1, 07 OCT 2021 to 04 NOV 2021

SE-1, 07 OCT 2021 to 04 NOV 2021