

(KENLN5.KENLN) 19339

KENLN FIVE DEPARTURE (RNAV)

CINCINNATI/NORTHERN KENTUCKY INTL (CVG)

AL-655 (FAA)

COVINGTON, KENTUCKY

D-ATIS DEP 135.3

CLNC DEL

127.175

GND CON

121.7

CINCINNATI TOWER

118.3 360.85 (RWYS 18C/36C, 9/27)

118.975 360.85 (RWY 18L/36R)

133.325 360.85 (RWY 18R/36L)

CINCINNATI DEP CON

126.65 254.25 (001°-180°)

128.7 254.25 (181°-360°)



CEMLA

HOBAL

HAGSS

HOMIX

BOUMR

(13)

BONLE

(13)

1400

1400

(10)

1400

1400

1400

1400

1400

1400

1400

1400

1400

1400

1400

1400

1400

1400

1400

1400

1400

1400

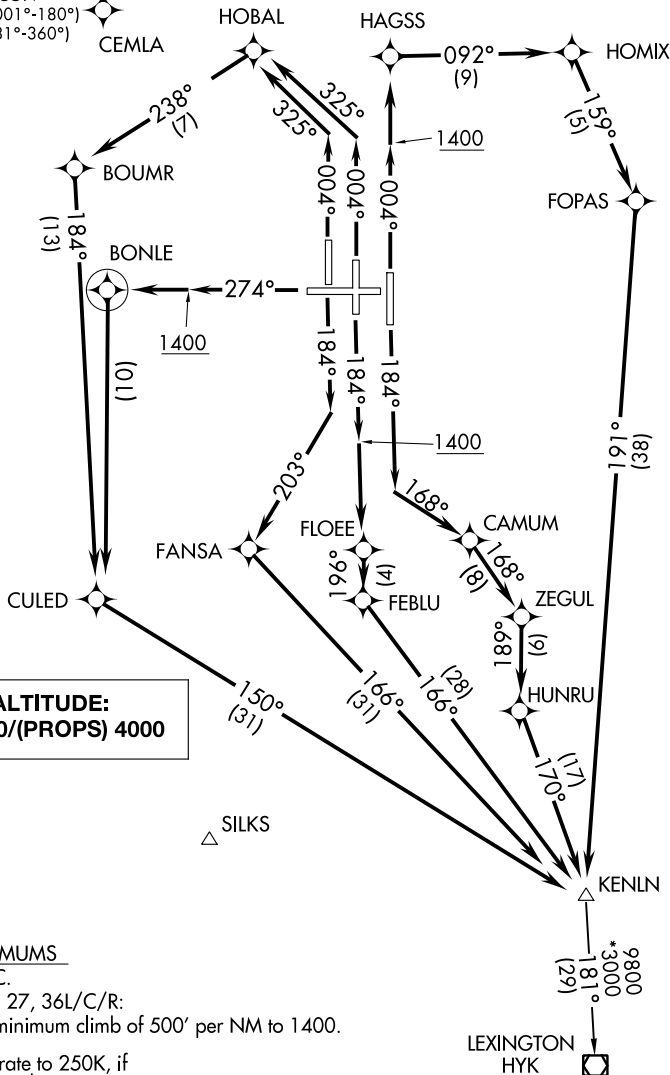
NOTE: If unable to accept climb rates, advise ATC on initial contact.

NOTE: DME/DME/IRU or GPS required.

NOTE: RADAR required.

NOTE: RNAV 1.

NOTE: Transponder code will be issued via PDC or Cincinnati CLNC DEL.



**TOP ALTITUDE:
(JETS) 6000/(PROPS) 4000**

△ CHCLL

△ SILKS

TAKEOFF MINIMUMS

Rwy 9: NA-ATC.

Rwys 18L/C/R, 27, 36L/C/R:

Standard with minimum climb of 500' per NM to 1400.

NOTE: Accelerate to 250K, if unable, advise ATC.

NOTE: Chart not to scale.

(NARRATIVE ON FOLLOWING PAGE)

KENLN FIVE DEPARTURE (RNAV)

(KENLN5.KENLN) 20JUN19

COVINGTON, KENTUCKY

CINCINNATI/NORTHERN KENTUCKY INTL (CVG)

SE-1, 07 OCT 2021 to 04 NOV 2021

SE-1, 07 OCT 2021 to 04 NOV 2021