

(LOVEY6.LOVEY) 19339

CINCINNATI/NORTHERN KENTUCKY INTL (CVG)

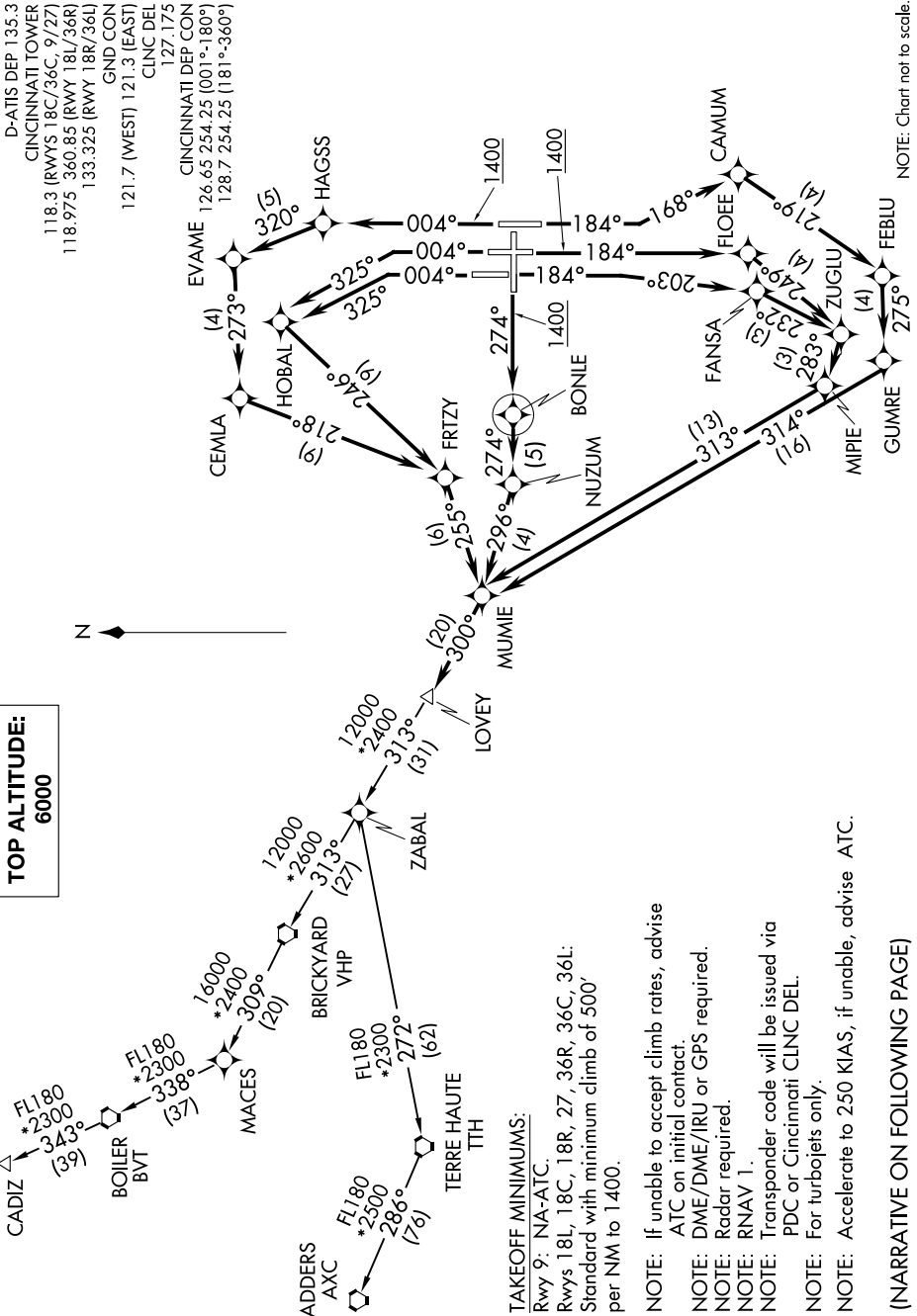
LOVEY SIX DEPARTURE (RNAV)

AL-655 (FAA)

COVINGTON, KENTUCKY

SE-1, 07 OCT 2021 to 04 NOV 2021

TOP ALTITUDE:
6000



NOTE: Chart not to scale.

LOVEY SIX DEPARTURE (RNAV)
(LOVEY6.LOVEY) 10DEC15

COVINGTON, KENTUCKY
CINCINNATI/NORTHERN KENTUCKY INTL (CVG)

SE-1, 07 OCT 2021 to 04 NOV 2021

- TAKEOFF MINIMUMS:**
Rwy 9: NA-ATC.
Rwys 18L, 18C, 18R, 27, 36R, 36C, 36L:
Standard with minimum climb of 500' per NM to 1400.
- NOTE:** If unable to accept climb rates, advise ATC on initial contact.
NOTE: DME/DME/IRU or GPS required.
NOTE: Radar required.
NOTE: RNAV 1.
NOTE: Transponder code will be issued via PDC or Cincinnati CLNC DEL.
NOTE: For turbojets only.
NOTE: Accelerate to 250 KIAS, if unable, advise ATC.
- (NARRATIVE ON FOLLOWING PAGE)**