

APP CRS	Rwy ldg	11000
184°	TDZE	875
	Apt Elev	896

RNAV (RNP) Z RWY 18C

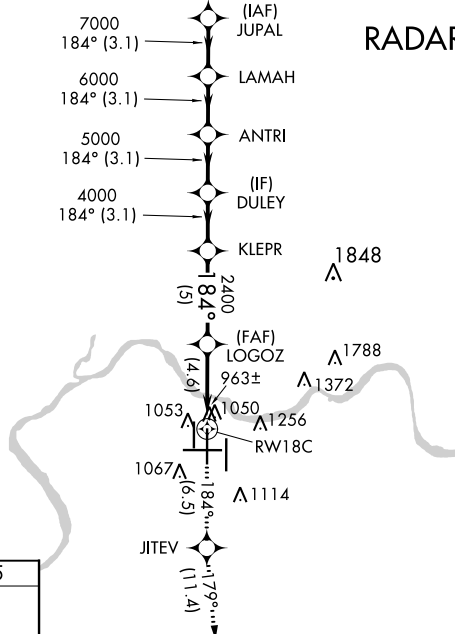
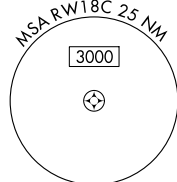
CINCINNATI/NORTHERN KENTUCKY INTL (CVG)

GPS Required. For uncompensated Baro-VNAV systems, procedure NA below -16°C (4°F) or above 47°C (116°F). For inoperative SSALR, increase RNP 0.15 visibility to 1½, RNP 0.30 visibility to 1¾. Simultaneous approach authorized with Rwy 18L/R. Use of FD or AP providing RNAV track guidance required during simultaneous operations.

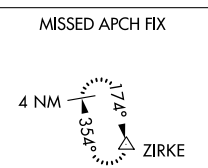


MISSED APPROACH: Climb to 3000 via 184° track to JITEV and via 179° track to ZIRKE and hold.

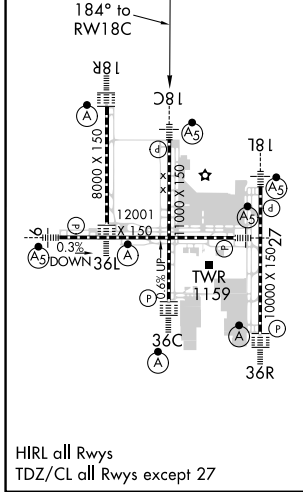
D-ATIS ARR 134.375 DEP 135.3	CINCINNATI APP CON 119.7 363.15 (090°- 269°) 123.875 363.15 (270°- 089°)	CINCINNATI TOWER 118.975 360.85 (RWY 18L/36R) 118.3 (RWYS 18C/36C, 09/27) 133.325 (RWY 18R/36L)	GND CON 121.7	CLNC DEL 127.175
---	--	---	-------------------------	----------------------------



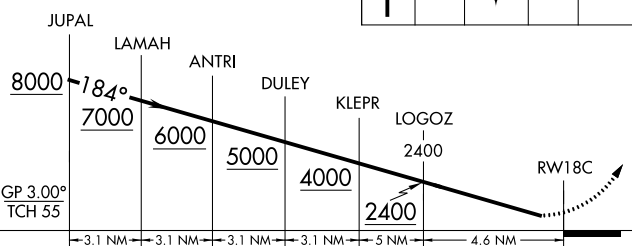
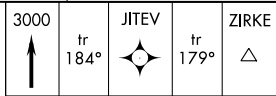
RADAR REQUIRED



ELEV 896	D	TDZE 875
-----------------	----------	-----------------



VGSI and RNAV glidepath not coincident (VGSI Angle 3.00/TCH 71).



CATEGORY	A	B	C	D
RNP 0.15 DA	1321/50		446 (500-1)	
RNP 0.30 DA	1389/60		514 (600-1¼)	

AUTHORIZATION REQUIRED

SE-1, 07 OCT 2021 to 04 NOV 2021

SE-1, 07 OCT 2021 to 04 NOV 2021