

APP CRS	Rwy Idg	<b>8000</b>
<b>184°</b>	TDZE	<b>868</b>
	Apt Elev	<b>896</b>

# RNAV (RNP) Z RWY 18R

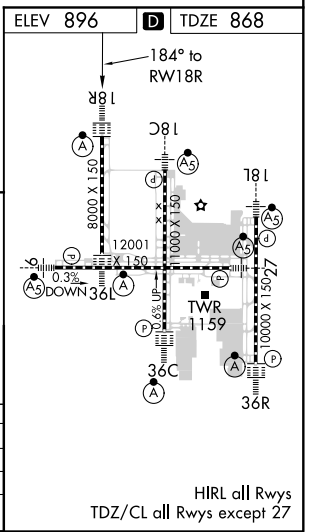
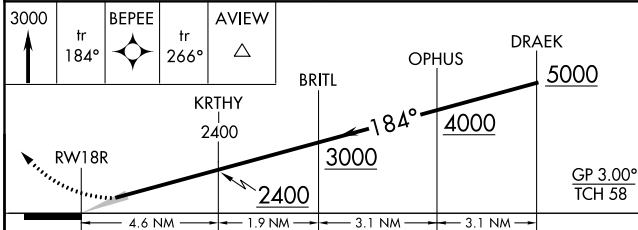
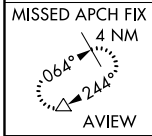
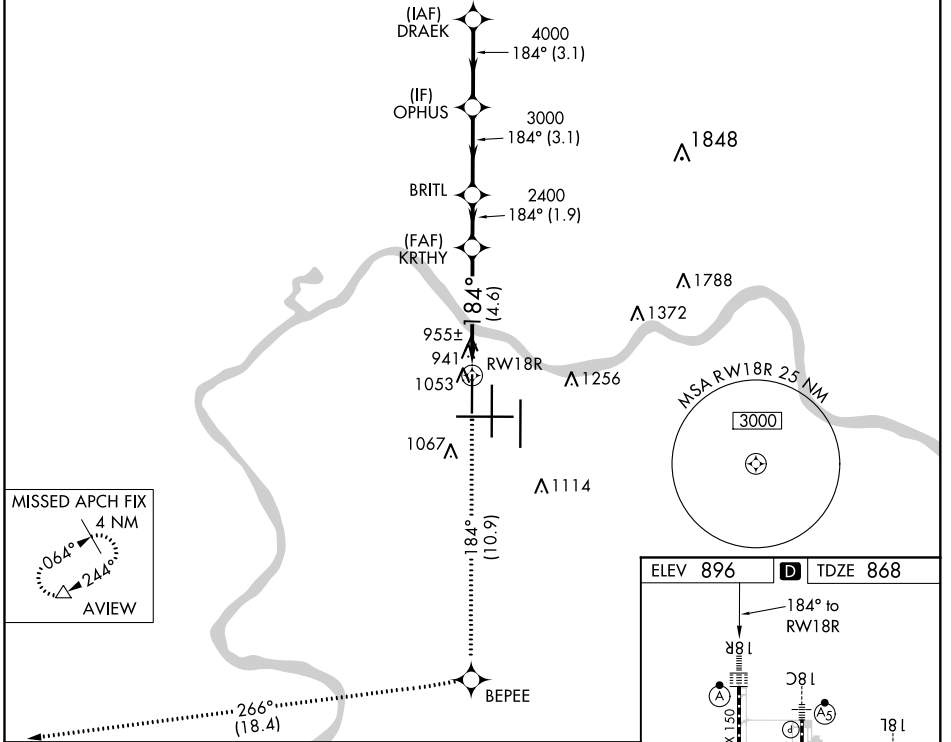
CINCINNATI/NORTHERN KENTUCKY INTL (CVG)

**NA** For inoperative ALSF, increase RNP 0.29 visibility to RVR 6000, RNP 0.30 visibility to 1½. For uncompensated Baro-VNAV systems, procedure NA below -16° C (4° F) or above 47° C (116° F). GPS required. Simultaneous approach authorized with Rwy 18C/L. Use of FD or AP providing RNAV track guidance required during simultaneous operations.

**ALSF-2**  
**MISSED APPROACH:** Climb to 3000 via 184° track to BEPEE and via 266° track to AVIEW and hold.

D-ATIS	CINCINNATI APP CON	CINCINNATI TOWER	GND CON	CLNC DEL
ARR <b>134.375</b> DEP <b>135.3</b>	<b>119.7 363.15</b> (090°-269°) <b>123.875 363.15</b> (270°-089°)	<b>118.975 360.85</b> (RWY 18L/36R) <b>118.3</b> (RWYS 18C/36C, 09/27) <b>133.325</b> (RWY 18R/36L)	<b>121.7</b>	<b>127.175</b>

## RADAR REQUIRED



CATEGORY	A	B	C	D
RNP 0.29 DA		1243/40	375 (400-¾)	
RNP 0.30 DA		1281/50	413 (400-1)	

## AUTHORIZATION REQUIRED

HIRL all Rwys  
 TDZ/CL all Rwys except 27

SE-1, 07 OCT 2021 to 04 NOV 2021

SE-1, 07 OCT 2021 to 04 NOV 2021