

APP CRS 274°	Rwy Idg 12001
	TDZE 875
	Apt Elev 896

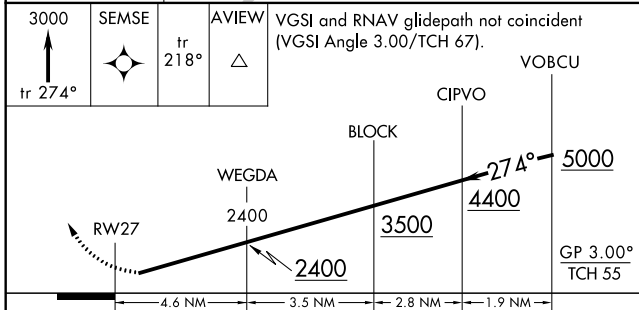
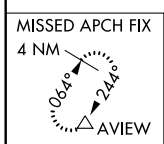
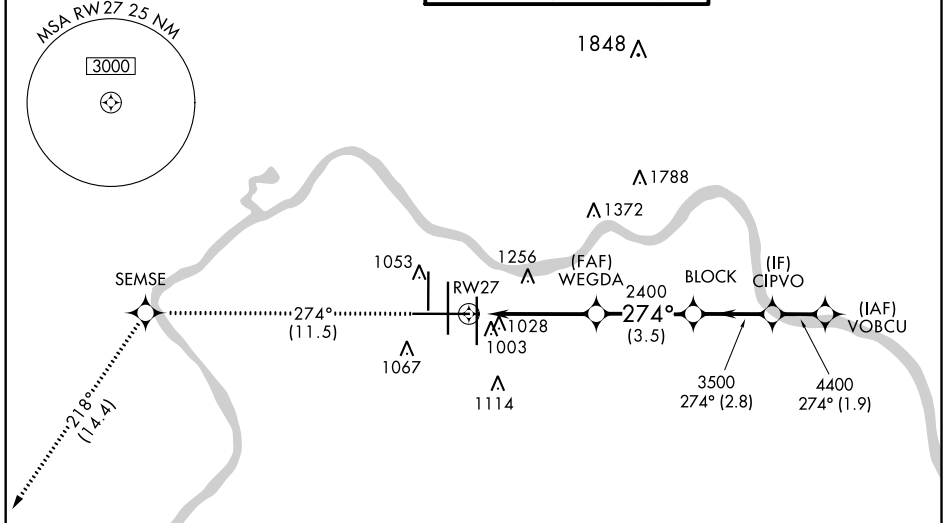
RNAV (RNP) Z RWY 27

CINCINNATI/NORTHERN KENTUCKY INTL (CVG)

NA For uncompensated Baro-VNAV systems, procedure NA below -16° C (4° F) or above 47° C (116° F). For inoperative MALSR, increase RNP 0.15 visibility to 1½, RNP 0.23 visibility to 1¾, RNP 0.30 visibility to 2. Visibility reduction by helicopters NA. GPS Required.

MALSR MISSED APPROACH: Climb to 3000 via 274° track to SEMSE and via 218° track to AVIEW and hold.

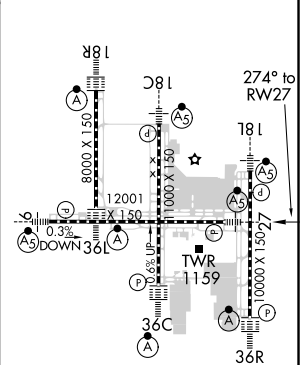
D-ATIS ARR 134.375 DEP 135.3	CINCINNATI APP CON 119.7 363.15 (090°-269°) 123.875 363.15 (270°-089°)	CINCINNATI TOWER 118.975 360.85 (RWY 18L/36R) 118.3 (RWYS 18C/36C, 09/27) 133.325 (RWY 18R/36L)	GND CON 121.7	CLNC DEL 127.175
---	--	---	-------------------------	----------------------------



CATEGORY	A	B	C	D
RNP 0.15 DA		1296/50	421 (400-1)	
RNP 0.23 DA		1378/60	503 (500-1½)	
RNP 0.30 DA		1445-1½	570 (600-1½)	

RADAR REQUIRED

ELEV 896 **D** TDZE 875



AUTHORIZATION REQUIRED

HIRL all Rwys
TDZ/CL all Rwys except 27

SE-1, 07 OCT 2021 to 04 NOV 2021

SE-1, 07 OCT 2021 to 04 NOV 2021