

APP CRS 004°	Rwy Idg TDZE Apt Elev	8000 873 896
------------------------	-----------------------------	---

RNAV (RNP) Z RWY 36L

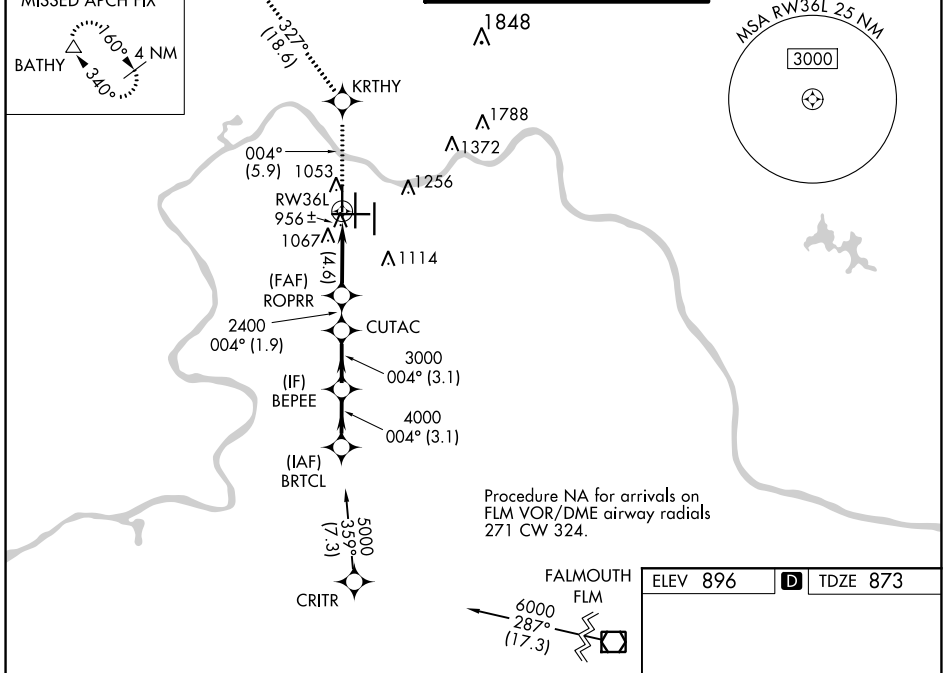
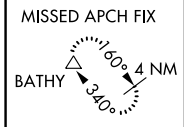
CINCINNATI/NORTHERN KENTUCKY INTL (CVG)

NA GPS Required. For uncompensated Baro-VNAV systems, procedure NA below -16°C (4°F) or above 47°C (116°F). For inoperative ALSF, increase RNP 0.29 and RNP 0.30 visibility to RVR 6000. Simultaneous approach authorized with Rwy 36C/R. Use of FD or AP providing RNAV track guidance required during simultaneous operations.

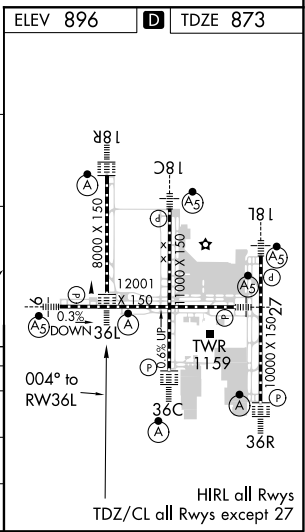
ALSF-2

MISSED APPROACH: Climb to 3000 via 004° track to KRTHY and via 327° track to BATHY and hold.

D-ATIS ARR DEP 134.375 135.3	CINCINNATI APP CON 119.7 363.15 (090°-269°) 123.875 363.15 (270°-089°)	CINCINNATI TOWER 118.975 360.85 (RWY 18L/36R) 118.3 (RWYS 18C/36C, 09/27) 133.325 (RWY 18R/36L)	GND CON 121.7	CLNC DEL 127.175
---	--	---	-------------------------	----------------------------



BRTCL	3000	tr 004°	KRTHY	tr 327°	BATHY
5000	4000				
Procedure Turn NA					
GP 3.00° TCH 55					
	3.1 NM	3.1 NM	1.9 NM	4.6 NM	
CATEGORY	A	B	C	D	
RNP 0.29 DA		1261/40	388 (400-¾)		
RNP 0.30 DA		1264/50	391 (400-1)		
AUTHORIZATION REQUIRED					



SE-1, 07 OCT 2021 to 04 NOV 2021

SE-1, 07 OCT 2021 to 04 NOV 2021