

APP CRS	Rwy Idg	10000
004°	TDZE	896
	Apt Elev	896

RNAV (RNP) Z RWY 36R

CINCINNATI/NORTHERN KENTUCKY INTL (CVG)

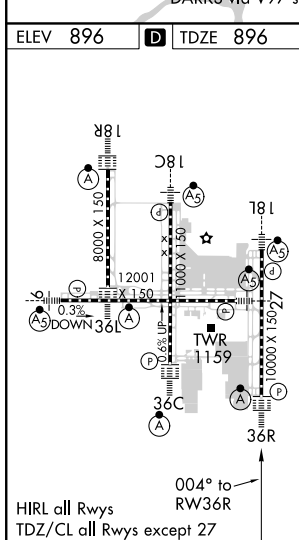
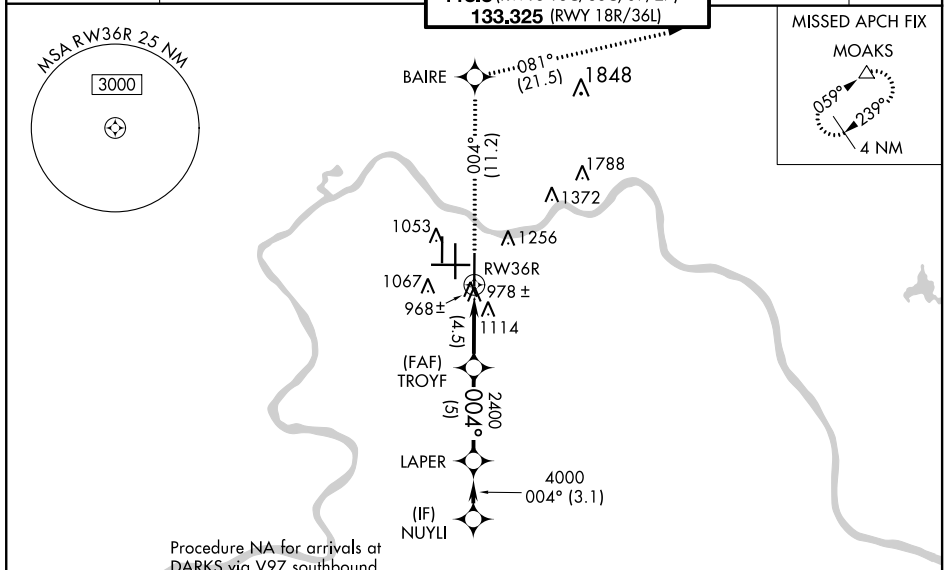
GPS Required. For uncompensated Baro-VNAV systems, procedure NA below NA-16°C (4°F) or above 47°C (116°F). For inoperative ALSF, increase RNP 0.16 and RNP 0.20 visibility to RVR 6000, RNP 0.30 visibility to 1½. Simultaneous approach authorized with Rwy 36L/C. Use of FD or AP providing RNAV track guidance required during simultaneous operations.

ALSF-2
MISSED APPROACH: Climb to 3000 via 004° track to BAIRE and via 081° track to MOAKS and hold.

D-ATIS	CINCINNATI APP CON
ARR 134.375 DEP 135.3	119.7 363.15 (090°-269°) 123.875 363.15 (270°-089°)

CINCINNATI TOWER
118.975 360.85 (RWY 18L/36R) 118.3 (RWYS 18C/36C, 09/27) 133.325 (RWY 18R/36L)

GND CON	CLNC DEL
121.7	127.175



3000	↑ tr 004°	BAIRE	↑ tr 081°	MOAKS	VGSI and RNAV glidepath not coincident (VGSI Angle 3.00°/TCH 70). NUYYLI
5000					LAPER
4000					Procedure Turn NA
2400					GP 3.00° TCH 55
2400					
2400					
4.5 NM			5 NM		3.1 NM
CATEGORY	A	B	C	D	
RNP 0.16 DA		1284/40	388 (400-¾)		
RNP 0.20 DA		1295/50	399 (400-1)		
RNP 0.30 DA		1329/50	433 (500-1)		

AUTHORIZATION REQUIRED

SE-1, 07 OCT 2021 to 04 NOV 2021

SE-1, 07 OCT 2021 to 04 NOV 2021