


APP CRS <b>094°</b>	Rwy Idg <b>12001</b>
	TDZE <b>883</b>
	Apt Elev <b>896</b>

# RNAV (RNP) Z RWY 9

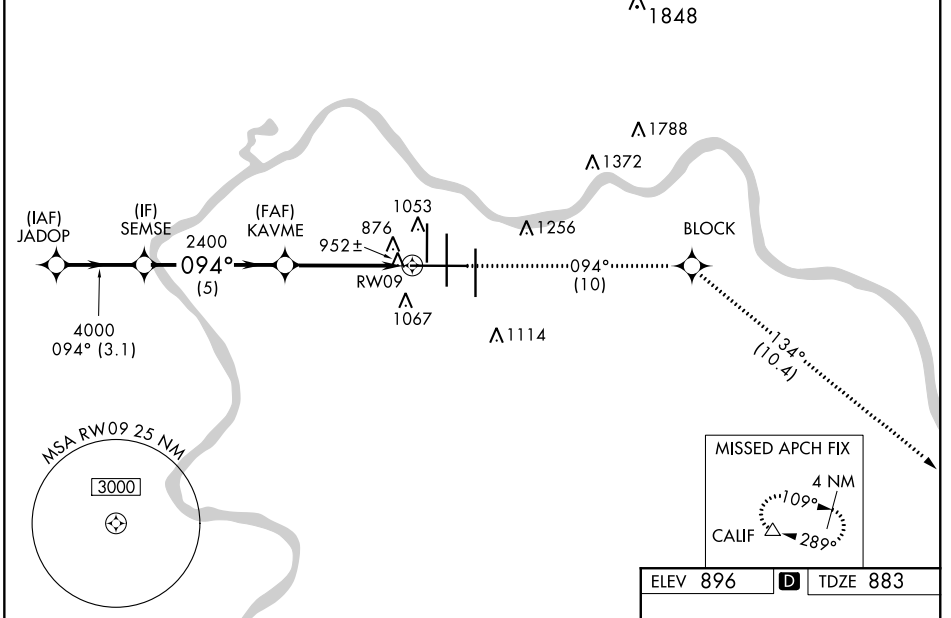
CINCINNATI/NORTHERN KENTUCKY INTL (CVG)

**GPS Required.** For uncompensated Baro-VNAV systems, procedure NA below -16° C (4° F) or above 47° C (116° F). For inoperative MALSR, increase RNP 0.18 visibility to RVR 5000, RNP 0.30 visibility to RVR 6000.

**MALSR**  
 MISSED APPROACH: Climb to 3000 via 094° track to BLOCK and via 134° track to CALIF and hold.


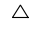
D-ATIS ARR <b>134.375</b> DEP <b>135.3</b>	CINCINNATI APP CON <b>119.7 363.15</b> (090°-269°) <b>123.875 363.15</b> (270°-089°)	CINCINNATI TOWER <b>118.975 360.85</b> (RWY 18L/36R) <b>118.3</b> (RWYS 18C/36C, 09/27) <b>133.325</b> (RWY 18R/36L)	GND CON <b>121.7</b>	CLNC DEL <b>127.175</b>
---	--	---	-------------------------	----------------------------

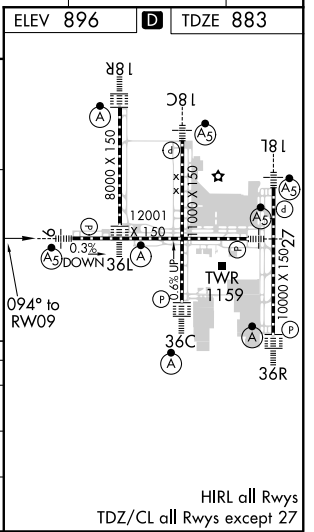
## RADAR REQUIRED



SE-1, 07 OCT 2021 to 04 NOV 2021

SE-1, 07 OCT 2021 to 04 NOV 2021

VGSi and RNAV glidepath not coincident (VGSi Angle 3.00/TCH 70).				
3000	BLOCK	tr 134°	CALIF	
tr 094°				
JADOP	SEMSE	KAVME	RWY 09	
5000	4000	2400		
GP 3.00°		2400		
TCH 52				
	3.1 NM	5 NM	4.5 NM	
CATEGORY	A	B	C	D
RNP 0.18 DA	1 199/24		316 (400-½)	
RNP 0.30 DA	1 233/40		350 (400-¾)	
<b>AUTHORIZATION REQUIRED</b>				



HIRL all Rwys  
TDZ/CL all Rwys except 27