

WAAS CH <b>86803</b> <b>W18B</b>	APP CRS <b>184°</b>	Rwy Idg <b>11000</b> TDZE <b>875</b> Apt Elev <b>896</b>
--	------------------------	--

# RNAV (GPS) Y RWY 18C

CINCINNATI/NORTHERN KENTUCKY INTL (CVG)

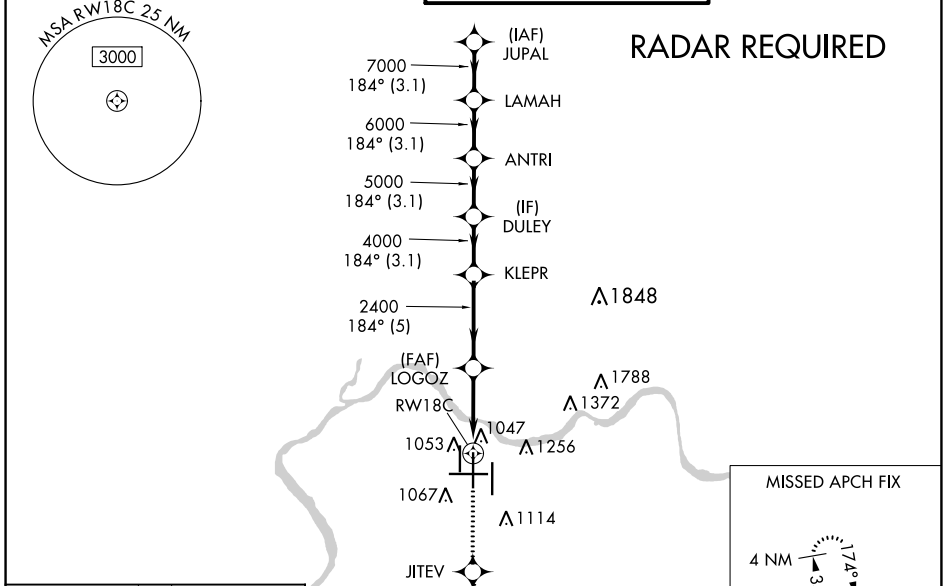
RNP APCH - GPS.

▼ For uncompensated Baro-VNAV systems, LNAV/VNAV NA below -16°C or above 54°C. Simultaneous approach authorized with Rwy 18 L/R. LNAV procedure NA during simultaneous operations. Use of FD or AP providing RNAV track guidance required during simultaneous operations.

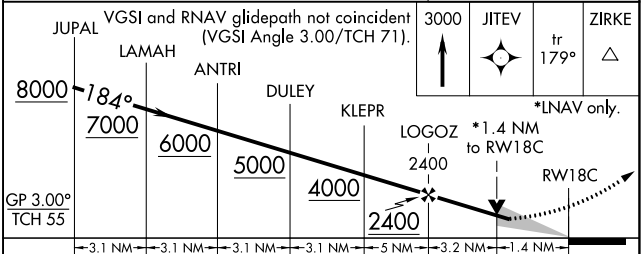
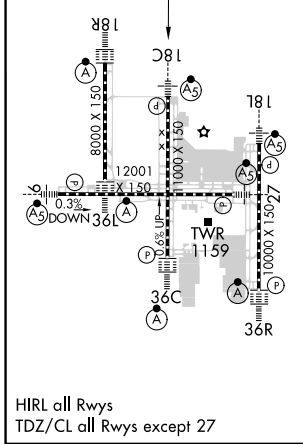


MISSED APPROACH: Climb to 3000 direct JITEV and on 179° track to ZIRKE and hold.

D-ATIS ARR <b>134.375</b> DEP <b>135.3</b>	CINCINNATI APP CON <b>119.7 363.15</b> (090°-269°) <b>123.875 363.15</b> (270°-089°)	CINCINNATI TOWER <b>118.975 360.85</b> (RWY 18L/36R) <b>118.3</b> (RWYS 18C/36C, 09/27) <b>133.325</b> (RWY 18R/36L)	GND CON <b>121.7</b>	CLNC DEL <b>127.175</b>
---	--	---	-------------------------	----------------------------



ELEV 896	<b>D</b>	TDZE 875
----------	----------	----------



CATEGORY	A	B	C	D
LPV DA		1075/18	200 (200-½)	
LNAV/VNAV DA		1398/60	523 (600-1¼)	
LNAV MDA	1360/24	485 (500-½)	1360/40 485 (500-¾)	1360/50 485 (500-1)
CIRCLING	1460-1	564 (600-1)	1560-1¾ 664 (700-1¾)	1560-2 664 (700-2)

SE-1, 07 OCT 2021 to 04 NOV 2021

SE-1, 07 OCT 2021 to 04 NOV 2021