

WAAS CH <b>40103</b> <b>W18A</b>	APP CRS <b>184°</b>	Rwy Idg <b>10000</b> TDZE <b>889</b> Apt Elev <b>896</b>
--	------------------------	--

# RNAV (GPS) Y RWY 18L

CINCINNATI/NORTHERN KENTUCKY INTL (CVG)

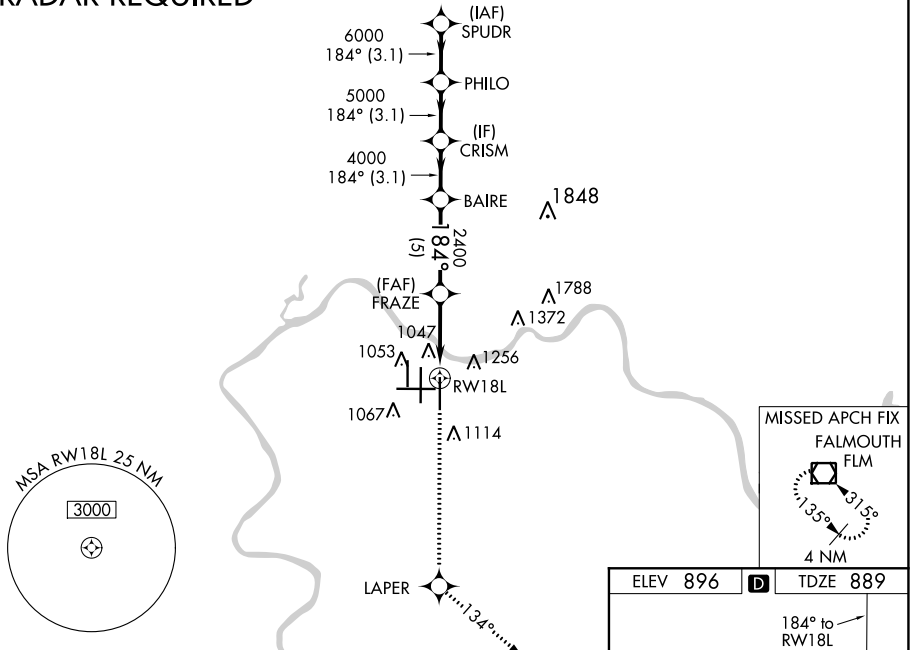
RNP APCH - GPS.

▼ For uncompensated Baro-VNAV systems, LNAV/VNAV NA below -16°C or above 54°C. Simultaneous approach authorized with Rwy 18C/R. LNAV procedure NA during simultaneous operations. Use of FD or AP providing RNAV track guidance required during simultaneous operations.

MALSRL MISSED APPROACH: Climb to 3000 direct LAPER and on 134° track to FLM VOR/DME and hold.

D-ATIS ARR <b>134.375</b> DEP <b>135.3</b>	CINCINNATI APP CON <b>119.7 363.15</b> (090°-269°) <b>123.875 363.15</b> (270°-089°)	CINCINNATI TOWER <b>118.975 360.85</b> (RWY 18L/36R) <b>118.3</b> (RWYS 18C/36C, 09/27) <b>133.325</b> (RWY 18R/36L)	GND CON <b>121.7</b>	CLNC DEL <b>127.175</b>
---	--	---	-------------------------	----------------------------

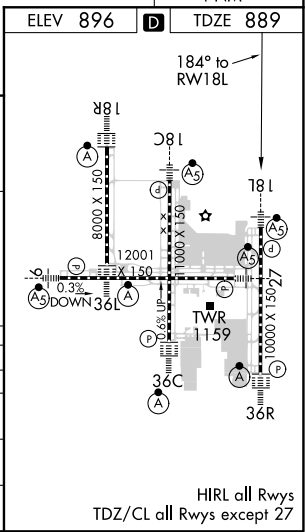
## RADAR REQUIRED



SE-1, 07 OCT 2021 to 04 NOV 2021

SE-1, 07 OCT 2021 to 04 NOV 2021

VGSi and RNAV glidepath not coincident (VGSi Angle 3.00/TCH 71).				
SPUDR	PHILO	CRISM	BAIRE	FRAZE
7000	6000	5000	4000	2400
184°		*LNAV only.		
GP 3.00°	TCH 55			
	3.1 NM	3.1 NM	5 NM	1.3 NM



CATEGORY	A		B		C		D	
LPV DA			1089/18		200 (200-1/2)			
LNAV/VNAV DA			1395/60		506 (500-1/4)			
LNAV MDA	1360/24		471 (500-1/2)		1360/40		1360/50	
CIRCLING	1460-1		564 (600-1)		1560-1 3/4		1560-2	

HIRL all Rwys  
TDZ/CL all Rwys except 27