

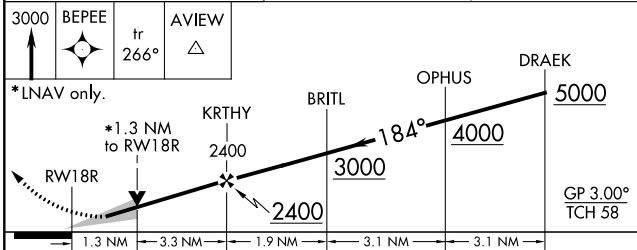
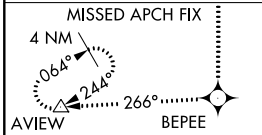
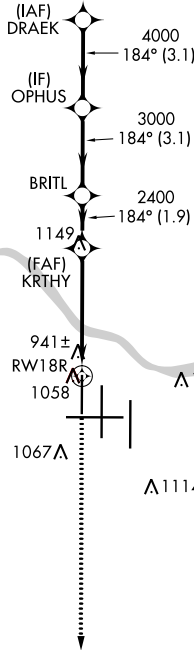
WAAS CH 58099 W18D	APP CRS 184°	Rwy Idg TDZE Apt Elev	8000 868 896
--	------------------------	-----------------------------	---

RNAV (GPS) Y RWY 18R

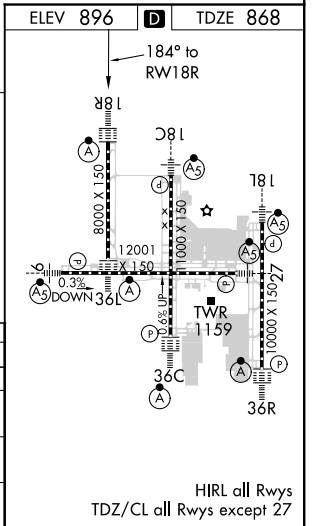
CINCINNATI/NORTHERN KENTUCKY INTL (CVG)

RNP APCH - GPS.		CINCINNATI APP CON		CINCINNATI TOWER		GND CON	CLNC DEL
<p>▼ For uncompensated Baro-VNAV systems, LNAV/VNAV NA below -16°C or above 54°C. Simultaneous approach authorized with Rwy 18L/C. LNAV procedure NA during simultaneous operations. Use of FD or AP providing RNAV track guidance required during simultaneous operations.</p>		119.7 363.15 (090°-269°) 123.875 363.15 (270°-089°)		118.975 360.85 (RWY 18L/36R) 118.3 (RWYS 18C/36C, 09/27) 133.325 (RWY 18R/36L)		121.7	127.175

RADAR REQUIRED



CATEGORY	A	B	C	D
LPV DA		1068/18	200 (200-½)	
LNAV/VNAV DA		1321/50	453 (500-1)	
LNAV MDA	1320/24	452 (500-½)	1320/40 452 (500-¾)	1320/50 452 (500-1)
CIRCLING	1460-1	564 (600-1)	1560-1¾ 664 (700-1¾)	1560-2 664 (700-2)



HIRL all Rwys
TDZ/CL all Rwys except 27

SE-1, 07 OCT 2021 to 04 NOV 2021

SE-1, 07 OCT 2021 to 04 NOV 2021