

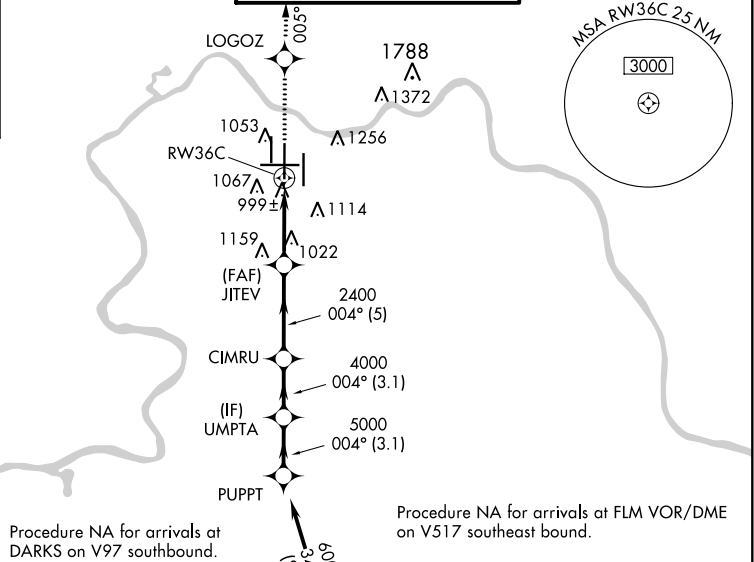
WAAS CH 97609 W36B	APP CRS 004°	Rwy Idg 11000 TDZE 851 Apt Elev 896
--	------------------------	--

RNAV (GPS) Y RWY 36C

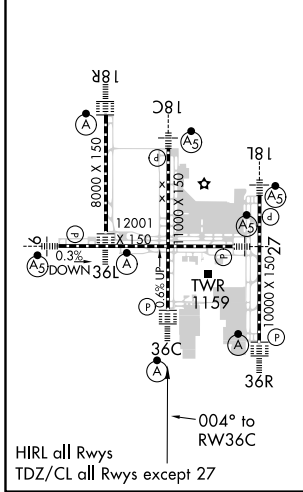
CINCINNATI/NORTHERN KENTUCKY INTL (CVG)

RNP APCH - GPS.	ALSF-2 	MISSED APPROACH: Climb to 3000 direct LOGOZ and on 005° track to NEATS and hold.
-----------------	------------	--

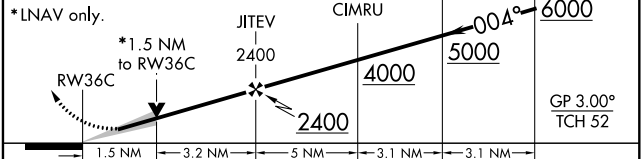
D-ATIS ARR 134.375 DEP 135.3	CINCINNATI APP CON 119.7 363.15 (090°-269°) 123.875 363.15 (270°-089°)	CINCINNATI TOWER 118.975 360.85 (RWY 18L/36R) 118.3 (RWYS 18C/36C, 09/27) 133.325 (RWY 18R/36L)	GND CON 121.7	CLNC DEL 127.175
---	--	---	-------------------------	----------------------------



ELEV 896	D	TDZE 851
----------	----------	----------



3000	LOGOZ	NEATS	VGSI and RNAV glidepath not coincident (VGSI Angle 3.00/TCH 77).	Procedure Turn NA
↑	◆	△		
	tr 005°			PUPPT



CATEGORY	A	B	C	D
LPV DA		1051/18	200 (200-½)	
LNAV/VNAV DA		1347/60	496 (500-1¼)	
LNAV MDA	1400/24	549 (600-½)	1400/50 549 (600-1)	1400/60 549 (600-1¼)
CIRCLING	1460-1	564 (600-1)	1560-1¾ 664 (700-1¾)	1560-2 664 (700-2)

SE-1, 07 OCT 2021 to 04 NOV 2021

SE-1, 07 OCT 2021 to 04 NOV 2021