

| | | | |
|--|------------------------|-----------------------------|---|
| WAAS CH 49099 W36A | APP CRS 004° | Rwy Idg TDZE Apt Elev | 8000 873 896 |
|--|------------------------|-----------------------------|---|

RNAV (GPS) Y RWY 36L

CINCINNATI/NORTHERN KENTUCKY INTL (CVG)

RNP APCH - GPS.

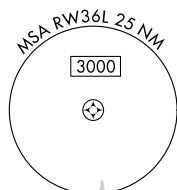
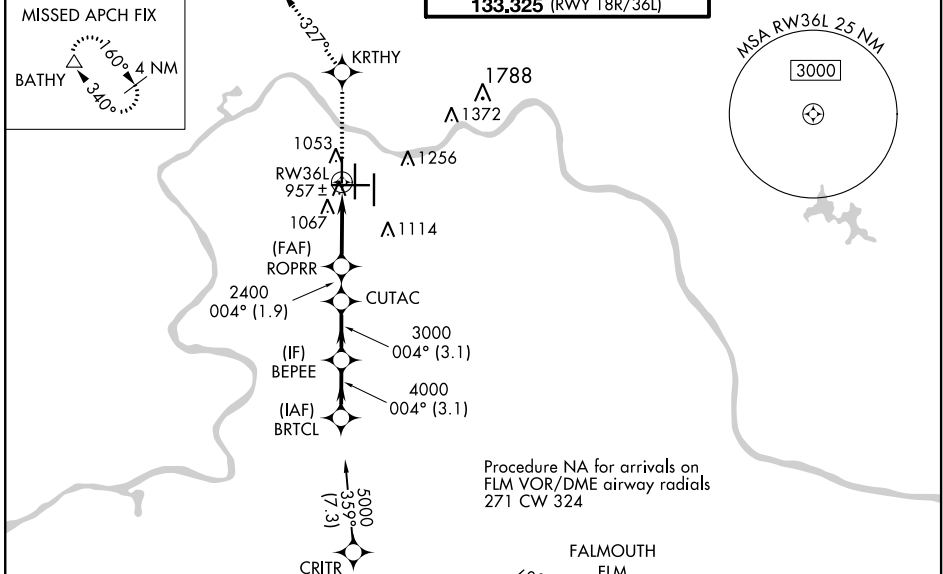
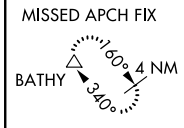
▼ For uncompensated Baro-VNAV systems, LNAV/VNAV NA below -16°C or above 54°C. Simultaneous approach authorized with Rwy 36C/R. LNAV procedure NA during simultaneous operations. Use of FD or AP providing RNAV track guidance required during simultaneous operations.

ALSf-2

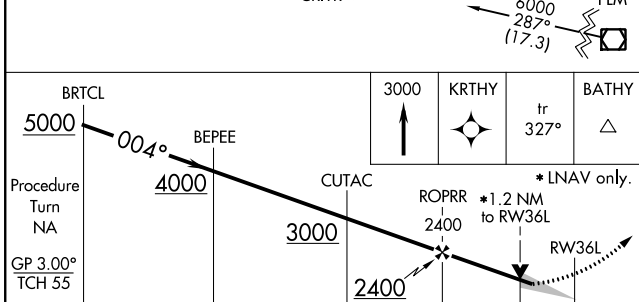


MISSED APPROACH: Climb to 3000 direct KRTHY and on 327° track to BATHY and hold.

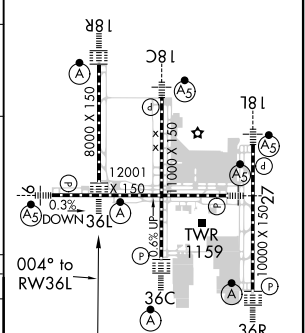
| | | | | |
|---|--|---|-------------------------|----------------------------|
| D-ATIS ARR 134.375 DEP 135.3 | CINCINNATI APP CON 119.7 363.15 (090°-269°) 123.875 363.15 (270°-089°) | CINCINNATI TOWER 118.975 360.85 (RWY 18L/36R) 118.3 (RWYS 18C/36C, 09/27) 133.325 (RWY 18R/36L) | GND CON 121.7 | CLNC DEL 127.175 |
|---|--|---|-------------------------|----------------------------|



Procedure NA for arrivals on FLM VOR/DME airway radials 271 CW 324



| | | |
|----------|----------|----------|
| ELEV 896 | D | TDZE 873 |
|----------|----------|----------|



| CATEGORY | A | B | C | D |
|--------------|---------|-------------|-------------------------|------------------------|
| LPV DA | | 1073/18 | 200 (200-½) | |
| LNAV/VNAV DA | | 1383/60 | 510 (500-1¼) | |
| LNAV MDA | 1300/24 | 427 (500-½) | 1300/40 427 (500-¾) | 1300/50 427 (500-1) |
| CIRCLING | 1460-1 | 564 (600-1) | 1560-1¾ 664 (700-1¾) | 1560-2 664 (700-2) |

HIRL all Rwy's
TDZ/CL all Rwy's except 27

SE-1, 07 OCT 2021 to 04 NOV 2021

SE-1, 07 OCT 2021 to 04 NOV 2021