


WAAS CH <b>61115</b> <b>W28A</b>	APP CRS <b>284°</b>	Rwy Idg <b>8204</b> TDZE <b>5459</b> Apt Elev <b>5528</b>
--	------------------------	--


# RNAV (GPS) RWY 28

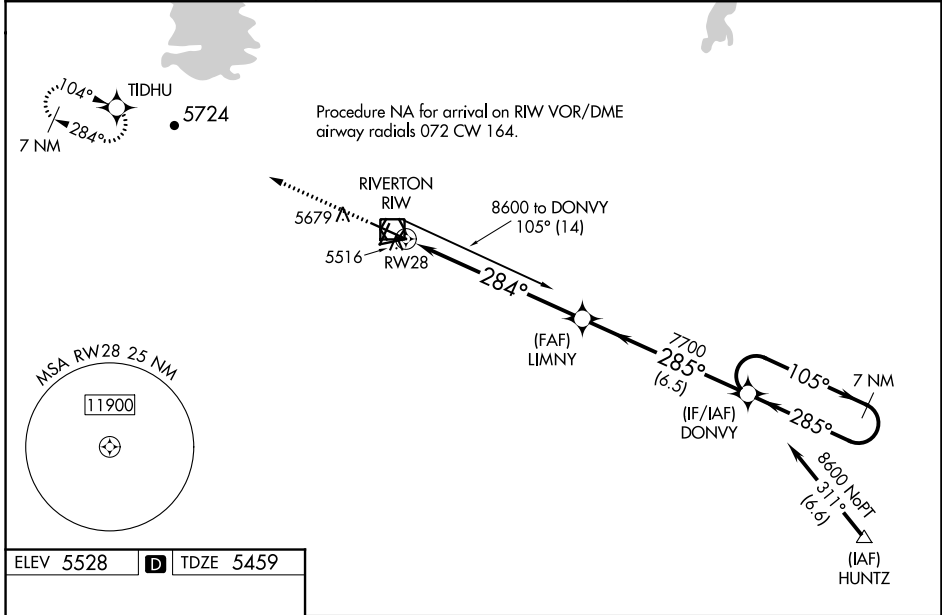
CENTRAL WYOMING RGNL (RIW)

**⚠** DME/DME RNP-0.3 NA. Baro-VNAV and VDP NA when using Lander altimeter setting. For uncompensated Baro-VNAV systems, LNAV/VNAV NA below -27°C (-16°F) or above 48°C (118°F). For inop MALSR, increase LNAV/VNAV all Cats visibility to 7/8 mile and LNAV Cat C and D visibility to 1 mile. When local altimeter setting not received, use Lander altimeter setting: increase LPV DA to 5713 feet, LNAV/VNAV DA to 5763 and all visibilities 1/2 mile; increase all MDA 60 feet and LNAV Cat C and D visibility 1/2 mile. For inop MALSR, when using Lander altimeter setting, increase LPV all Cats visibility to 7/8 mile and LNAV/VNAV all Cats visibility to 1 mile.

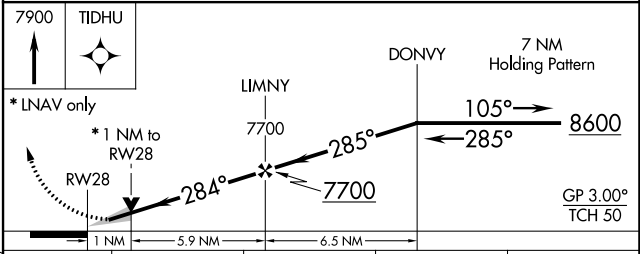
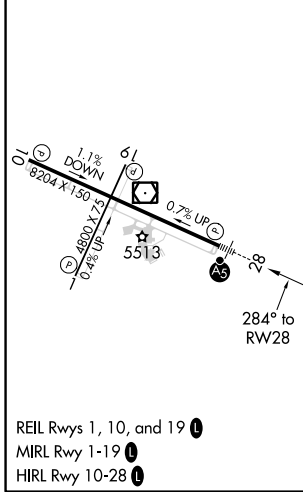
MALSR 

MISSED APPROACH: Climb to 7900 direct TIDHU and hold.

ASOS <b>121.425</b>	SALT LAKE CENTER <b>133.25 285.6</b>	UNICOM <b>122.8 (CTAF)</b> 
------------------------	---	---



ELEV 5528	<b>D</b>	TDZE 5459
-----------	----------	-----------



CATEGORY	A	B	C	D
LPV DA		5659-1/2	200 (200-1/2)	
LNAV/VNAV DA		5709-1/2	250 (200-1/2)	
LNAV MDA	5820-1/2	361 (400-1/2)	5820-5/8	361 (400-5/8)
<b>C</b> CIRCLING	6000-1	472 (500-1)	6000-1 1/2 472 (500-1 1/2)	6120-2 592 (600-2)

RIVERTON, WYOMING  
Amdt 1A 21JUL16

43°04'N-108°28'W

# CENTRAL WYOMING RGNL (RIW)

## RNAV (GPS) RWY 28

NW-1, 07 OCT 2021 to 04 NOV 2021

NW-1, 07 OCT 2021 to 04 NOV 2021