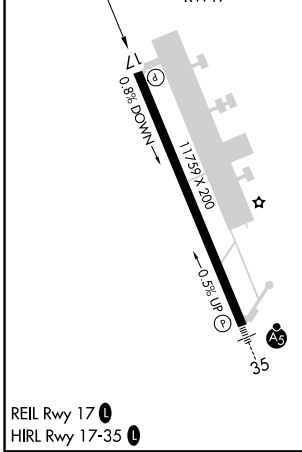
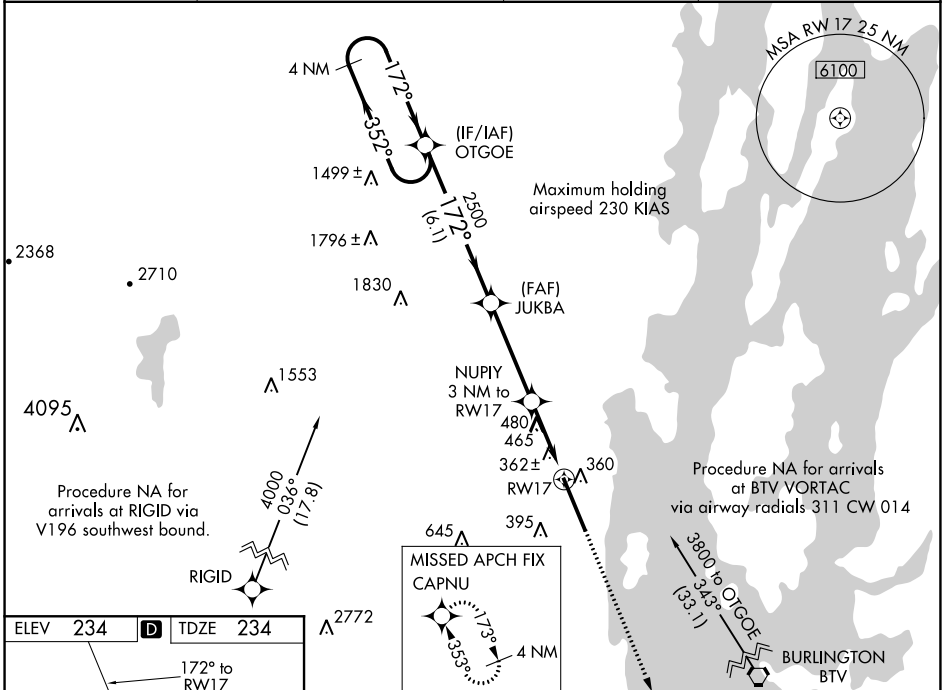


WAAS CH 40402 W17A	APP CRS 172°	Rwy Idg TDZE 234 Apt Elev 234	11759
--	------------------------	---	--------------

RNAV (GPS) RWY 17

PLATTSBURGH INTL (PBG)

<p>NA</p> <p>When local altimeter setting not received, use Burlington Intl altimeter setting and increase all DA 54 feet, all MDA 60 feet, LPV all Cats visibility ¼ mile, LNAV/VNAV all Cats visibility ½ mile, LNAV Cats C, D and E visibility ¼ mile and Circling Cat C visibility ¼ mile. VDP NA when using Burlington Intl altimeter setting. Baro-VNAV NA. DME/DME RNP-0.3 NA. Helicopter visibility reduction below ¾ SM NA.</p>	<p>MISSED APPROACH: Climb to 3100 direct CAPNU and hold.</p>		
<p>ASOS 132.225</p>	<p>BURLINGTON APP CON * 121.1 278.8</p>	<p>CLNC DEL 121.85</p>	<p>UNICOM 122.7 (CTAF)</p>



ELEV	234	TDZE	234		
<p>4 NM Holding Pattern</p> <p>OTGOE</p> <p>JUKBA</p> <p>NUPIY 3 NM to RWY 17</p> <p>GP 3.00° TCH 54</p> <p>3500 ← 352° → 172° → 2500</p> <p>← 6.1 NM → ← 3.8 NM → ← 1.6 NM → ← 1.4 NM →</p> <p>*1.4 NM to RWY 17</p> <p>*1240</p> <p>RWY 17</p>					
3100	CAPNU	*LNAV only.			
CATEGORY	A	B	C	D	E
LPV DA	561-1 327 (400-1)				
LNAV/VNAV DA	706-1 ½ 472 (500-1 ½)				
LNAV MDA	740-1	506 (600-1)	740-1 ¾	506 (600-1 ¾)	
CIRCLING	740-1	506 (600-1)	780-1 ½	800-2	980-2 ¾
			546 (600-1 ½)	566 (600-2)	746 (800-2 ¾)

NE-2, 07 OCT 2021 to 04 NOV 2021

NE-2, 07 OCT 2021 to 04 NOV 2021