

WAAS CH 78003 W35A	APP CRS 353°	Rwy Idg 11759 TDZE 177 Apt Elev 234
--	------------------------	--

RNAV (GPS) RWY 35

PLATTSBURGH INTL (PBG)

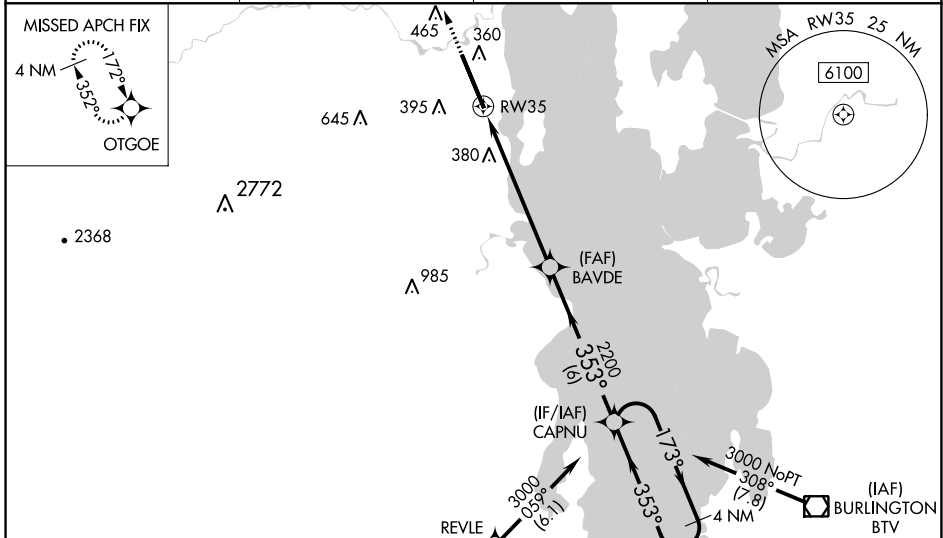
⚠ For uncompensated Baro-VNAV systems, LNAV/VNAV NA below -18°C (0°F) or above 54°C (130°F). DME/DME RNP-0.3 NA. For inop MALSR, increase LPV and LNAV/VNAV all Cats visibility to 7/8 mile. For inop MALSR when using Burlington altimeter setting, increase LPV and LNAV/VNAV all Cats visibility to 1 mile. When local altimeter setting not received, use Burlington altimeter setting and increase all DA 54 feet and all MDA 60 feet; increase LPV and LNAV/VNAV all Cats visibility to 5/8 mile, LNAV Cats C, D visibility to 1 1/4 mile, and increase Circling Cats C/D visibility 1/4 mile. VDP and Baro-VNAV NA when using Burlington Intl altimeter setting.

MALSR

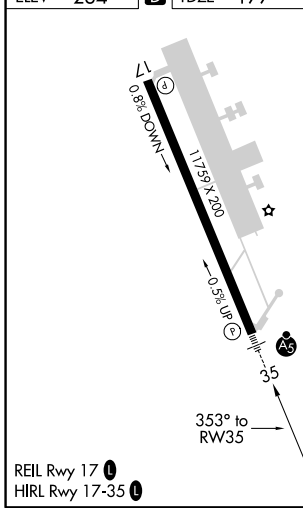


MISSED APPROACH:
Climb to 3500 direct OTGOE and hold, continue climb-in-hold to 3500.

ASOS 132.225	BURLINGTON APP CON * 121.1 278.8	CLNC DEL 121.85	UNICOM 122.7 (CTAF) 0
------------------------	--	---------------------------	---------------------------------

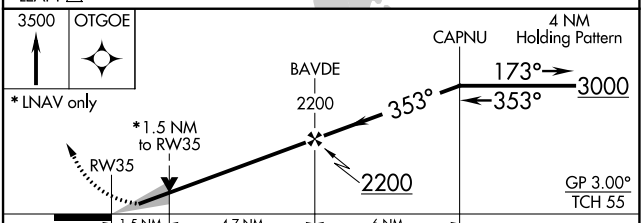


ELEV 234	D TDZE 177
----------	-------------------



Procedure NA for arrivals on BTW VORTAC airway radials 311 CW 014.

Procedure NA for arrivals at LEAFY on V489 southbound.



CATEGORY	A	B	C	D
LPV DA		427-1/2	250 (200-1/2)	
LNAV/VNAV DA		434-1/2	257 (200-1/2)	
LNAV MDA	700-1/2	523 (500-1/2)	700-1	523 (500-1)
C CIRCLING	720-1	740-1	800-1 1/2	960-2 1/4
	486 (600-1)	506 (600-1)	566 (700-1 1/2)	726 (800-2 1/4)

NE-2, 07 OCT 2021 to 04 NOV 2021

NE-2, 07 OCT 2021 to 04 NOV 2021