

APP CRS 025°	Rwy Idg 6001
	TDZE 20
	Apt Elev 20

RNAV (GPS) RWY 1

NORTHEASTERN RGNL (E,DE)

RNP APCH.

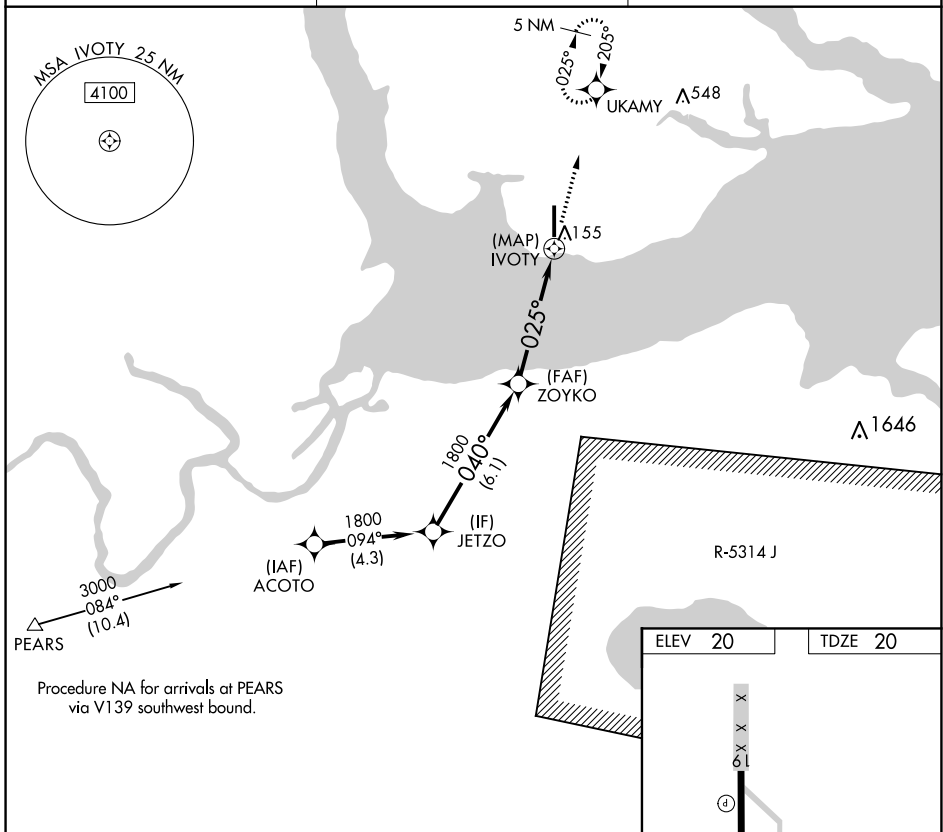
▼ If local altimeter setting not received, use Elizabeth City altimeter setting and increase all MDAs 60 feet.
▲ Rwy 1 helicopter visibility reduction below 3/4 SM NA.

MISSED APPROACH: Climb to 4000 direct UKAMY and hold, continue climb-in-hold to 4000.

AWOS-3
118.275

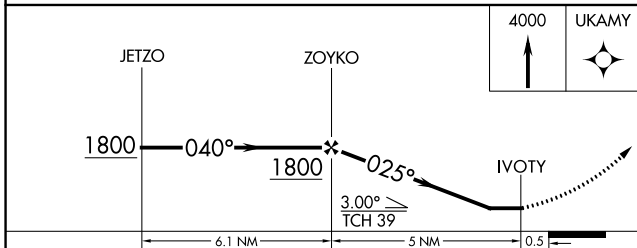
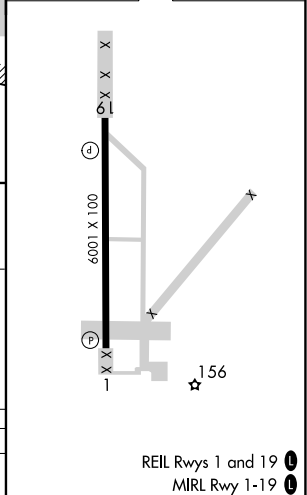
WASHINGTON CENTER
123.85 279.65

UNICOM
123.0 (CTAF) 0



Procedure NA for arrivals at PEARIS via V139 southwest bound.

ELEV 20	TDZE 20
---------	---------



CATEGORY	A	B	C	D
LNAV MDA	460-1	440 (500-1)	460-1½ 440 (500-1½)	460-1½ 440 (500-1½)

REIL Rwys 1 and 19 0
MIRL Rwy 1-19 0

SE-2, 07 OCT 2021 to 04 NOV 2021

SE-2, 07 OCT 2021 to 04 NOV 2021