

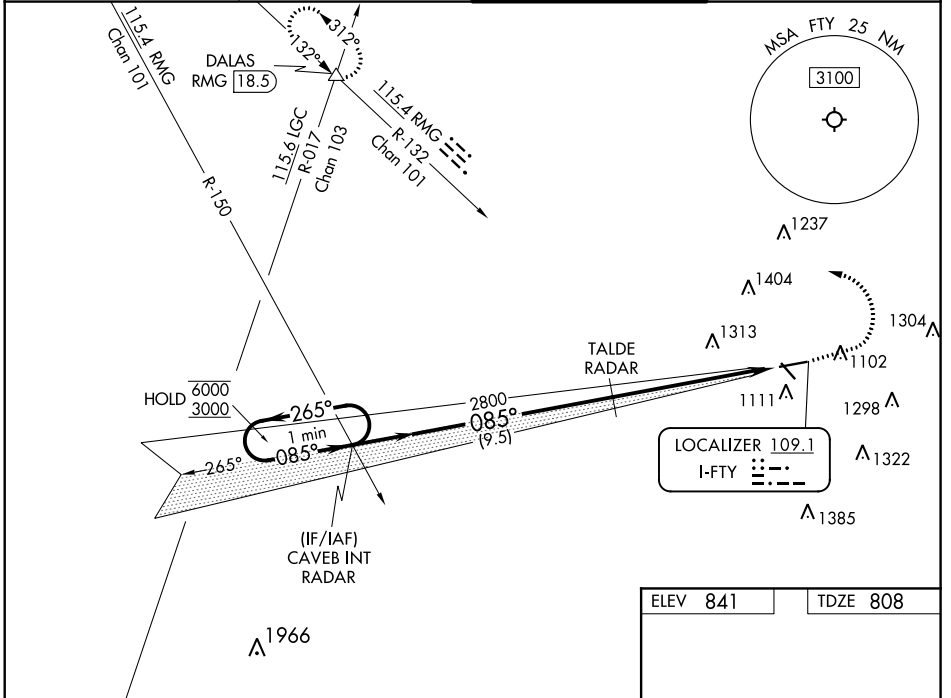
LOC I-FTY <b>109.1</b>	APP CRS <b>085°</b>	Rwy Idg TDZE Apt Elev <b>5797</b> <b>808</b> <b>841</b>
---------------------------	------------------------	--

# ILS or LOC RWY 8

FULTON COUNTY EXEC/CHARLIE BROWN FLD (F'Y)

RADAR required to define TALDE. RADAR required for procedure entry.	MALSR 	MISSED APPROACH: Climb to 1800 then climbing left turn to 4000 on heading 290° and RMG R-132 to DALAS INT/ RMG VORTAC 18.5 DME and hold.
<b>▼</b> Circling Rwy 14, 32 NA at night. Rwy 8 helicopter visibility reduction below 3/4 SM NA. <b>▲</b> For inop ALS, increase S-LOC 8 Cat A visibility to 1 SM, Cat C/D visibility to 2 1/2 SM. Ridge with trees to 1299' MSL between FAF and runway threshold may be obscured by clouds even with airfield ceiling at or above procedure minimums.		

ATIS <b>120.175</b>	ATLANTA APP CON <b>121.0 268.7</b>	FULTON COUNTY TOWER <b>118.45 257.8</b>	GND CON <b>121.7 348.6</b>
------------------------	---------------------------------------	--	-------------------------------



SE-4, 07 OCT 2021 to 04 NOV 2021

SE-4, 07 OCT 2021 to 04 NOV 2021

One Minute Holding Pattern  GS 3.00° TCH 63	CAVEB INT RADAR  *2800	1800	4000	RMG R-132	DALAS												
		TALDE RADAR 2800		*LOC only.													
ELEV 841   TDZE 808																	
CATEGORY	A	B	C	D													
S-ILS 8	1058-1/2		250 (300-1/2)														
S-LOC 8	1640-3/4	832 (800-3/4)	1640-17/8	832 (800-17/8)													
<b>C</b> CIRCLING	1640-1 799 (800-1)	1640-1 1/4 799 (800-1 1/4)	1740-2 3/4 899 (900-2 3/4)	1740-3 899 (900-3)													
HIRL Rwy 8-26 MIRL Rwy 14-32 REIL Rws 14, 26 and 32 FAF to MAP 6.1 NM																	
<table border="1"> <tr> <td>Knots</td> <td>60</td> <td>90</td> <td>120</td> <td>150</td> <td>180</td> </tr> <tr> <td>Min:Sec</td> <td>6:06</td> <td>4:04</td> <td>3:03</td> <td>2:26</td> <td>2:02</td> </tr> </table>						Knots	60	90	120	150	180	Min:Sec	6:06	4:04	3:03	2:26	2:02
Knots	60	90	120	150	180												
Min:Sec	6:06	4:04	3:03	2:26	2:02												

# ILS or LOC RWY 8