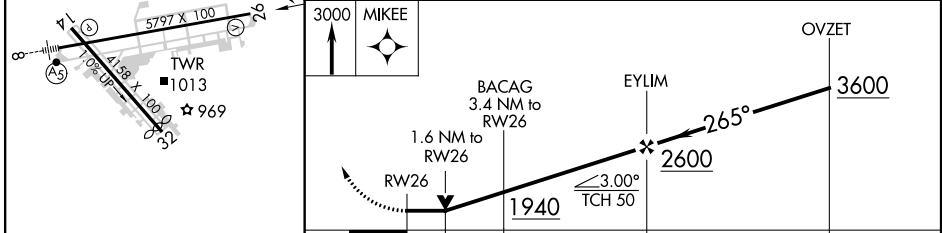
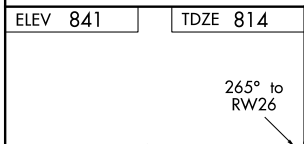
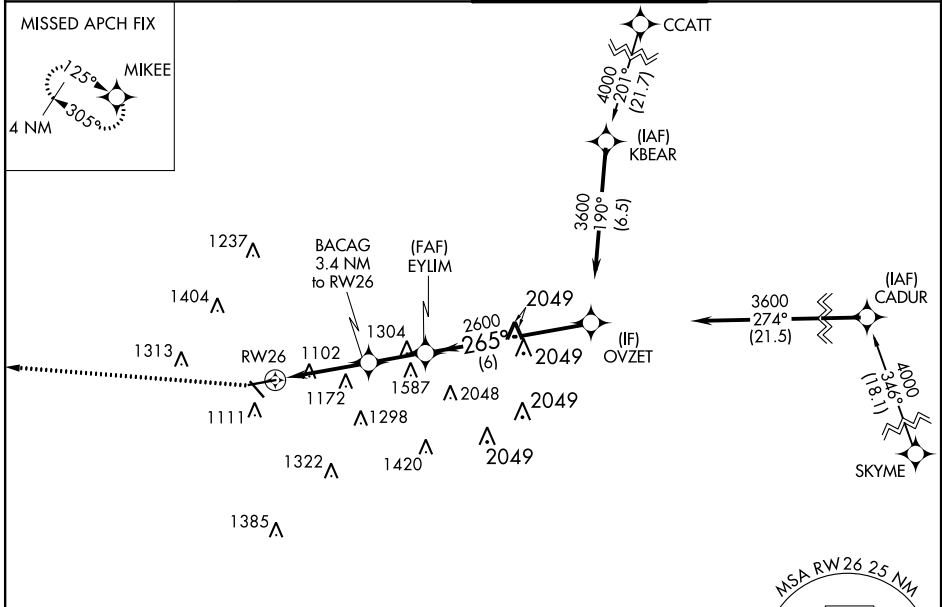


WAAS CH 65930 W26A	APP CRS 265°	Rwy Idg TDZE Apt Elev	5797 814 841
--	------------------------	-----------------------------	---

RNAV (GPS) RWY 26

FULTON COUNTY EXEC/CHARLIE BROWN FLD (F'TY)

RNP APCH.		MISSED APPROACH: Climb to 3000 direct MIKEE and hold.	
<p>Circling Rwy 14, 32 NA at night. Rwy 26 helicopter visibility reduction below 3/4 SM NA.</p>			
ATIS 120.175	ATLANTA APP CON 121.0 268.7	FULTON COUNTY TOWER 118.45 257.8	GND CON 121.7 348.6



ELEV 841	TDZE 814	MSA RWY 26 25 NM 3100			
		OVZET 3600			
CATEGORY	A	B		C	D
LP MDA	1360-1	546 (600-1)		1360-1½	546 (600-1½)
LNAV MDA	1380-1	566 (600-1)		1380-1½	566 (600-1½)
CIRCLING	1440-1 599 (600-1)	1520-1 679 (700-1)		1740-2¾ 899 (900-2¾)	1740-3 899 (900-3)

HIRL Rwy 8-26
MIRL Rwy 14-32
REIL Rwy 14, 26 and 32

SE-4, 07 OCT 2021 to 04 NOV 2021

SE-4, 07 OCT 2021 to 04 NOV 2021