

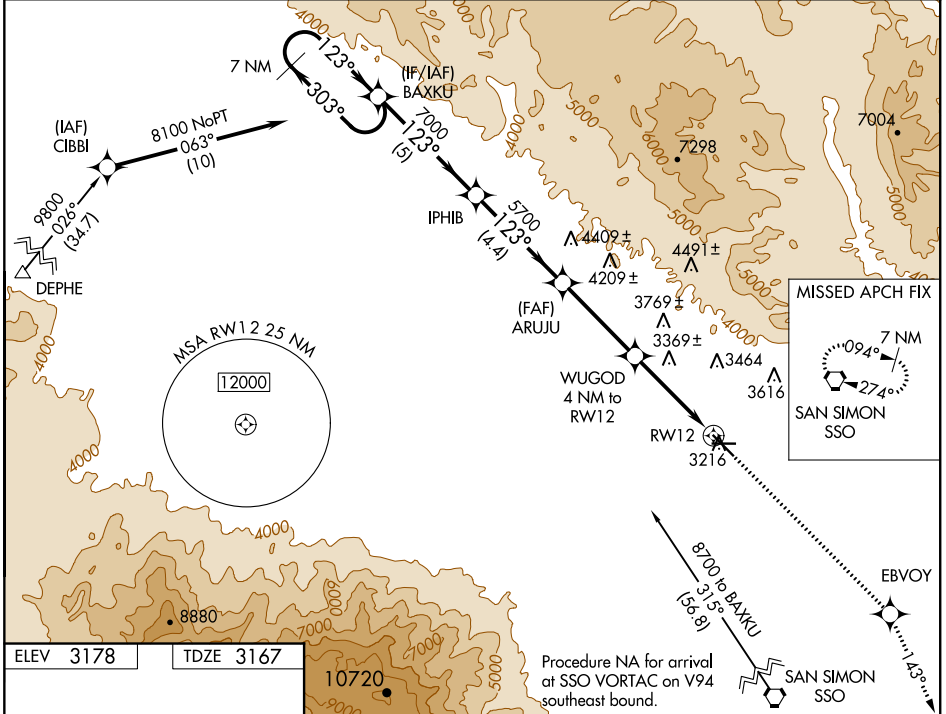
WAAS CH <b>69516</b> <b>W12A</b>	APP CRS <b>123°</b>	Rwy Idg TDZE Apt Elev	<b>6007</b> <b>3167</b> <b>3178</b>
--	------------------------	-----------------------------	---

# RNAV (GPS) RWY 12

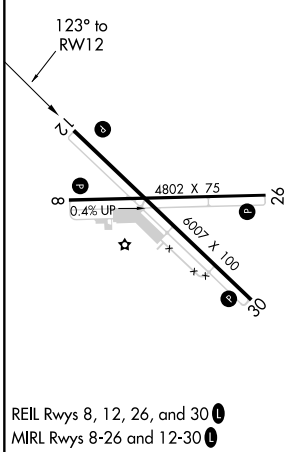
SAFFORD RGNL (SAD)

RNP APCH.	MISSED APPROACH: Climb to 10000 direct EBVOY and on track 143° to SSO VORTAC and hold.
For uncompensated Baro-VNAV systems, LNAV/VNAV NA below -21°C or above 54°C. Circling Rwy 8 NA at night.	

ASOS <b>124.175</b>	ALBUQUERQUE CENTER <b>134.45 327.15</b>	UNICOM <b>122.8 (CTAF) 0</b>
------------------------	--	---------------------------------



ELEV 3178	TDZE 3167
-----------	-----------



7 NM Holding Pattern BAXKU	10000 EBVOY	tr 143°	SSO	
8100 ← 303°	IPHIB	ARUJU	WUGOD 4 NM to RW12	
123° →	7000	5700	* 1.6 NM to RW12	
GP 3.00° TCH 38		*4480	* LNAV only	
	5 NM	4.4 NM	3.7 NM	
			2.4 NM	
			1.6 NM	
CATEGORY	A	B	C	D
LPV DA	3417-1	250 (300-1)		NA
LNAV/VNAV DA	3635-1¾	468 (500-1¾)		NA
LNAV MDA	3700-1	533 (600-1)		NA
CIRCLING	3740-1	562 (600-1)		NA

SW-4, 07 OCT 2021 to 04 NOV 2021

SW-4, 07 OCT 2021 to 04 NOV 2021