

WAAS CH 78316 W30A	APP CRS 303°	Rwy Idg TDZE Apt Elev	6007 3169 3179
----------------------------------------	------------------------	-----------------------------	-------------------------------------------

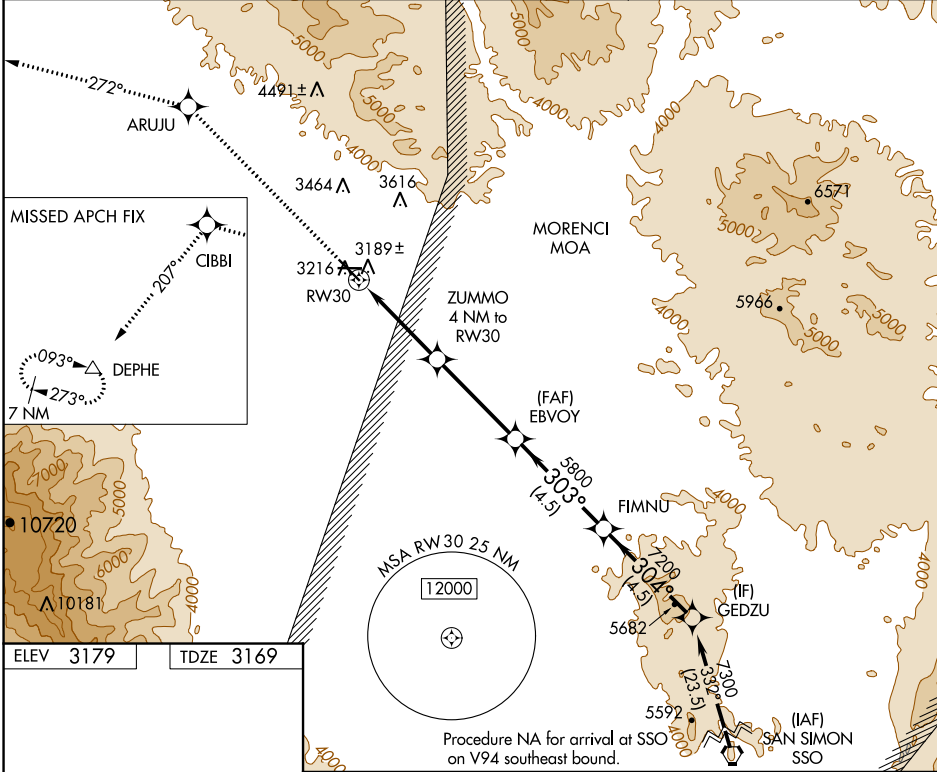
RNAV (GPS) RWY 30

SAFFORD RGNL (SAD)

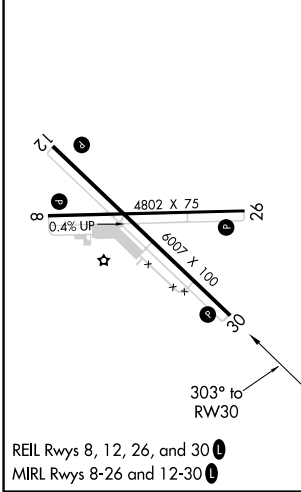
⚠ For uncompensated Baro-VNAV systems, LNAV/VNAV NA below -21°C (-5°F) or above 54°C (130°F).
⚠ DME/DME RNP-0.3 NA. Night landing: Rwy 8 NA.

MISSED APPROACH: Climb to 10000 direct ARUJU and on track 272° to CIBBI and on track 207° to DEPHE and hold.

ASOS 124.175	ALBUQUERQUE CENTER 134.45 327.15	UNICOM 122.8 (CTAF) 0
------------------------	--------------------------------------------	---------------------------------



ELEV 3179	TDZE 3169
-----------	-----------



REIL Rwy 8, 12, 26, and 30 **1**
 MIRL Rwy 8-26 and 12-30 **1**

10000	ARUJU	CIBBI	DEPHE	VGSI and RNAV glidepath not coincident (VGSI Angle 3.00/TCH 40).	
↑	tr 272°	tr 207°	△	EBVOY	GEDZU
* LNAV only		ZUMMO 4 NM to RW30	5800	FIMNU	7300
RW30		* 2.1 NM to RW30	4480*	303°	Procedure Turn NA
			5800	304°	GP 3.00°
				7200	TCH 36
CATEGORY	A	B	C	D	
LPV DA	3419-1	250 (300-1)		NA	
LNAV/VNAV DA	3854-2½	685 (700-2½)		NA	
LNAV MDA	3860-1	691 (700-1)		NA	
CIRCLING	3860-1	681 (700-1)		NA	

SW-4, 07 OCT 2021 to 04 NOV 2021

SW-4, 07 OCT 2021 to 04 NOV 2021