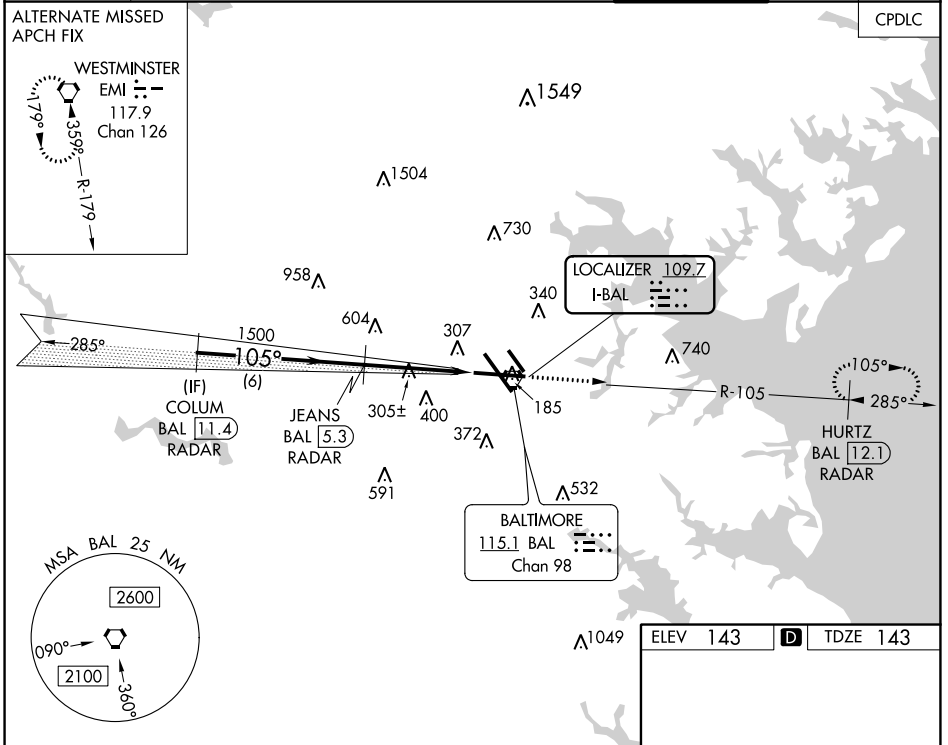


LOC I-BAL <b>109.7</b>	APP CRS <b>105°</b>	Rwy ldg <b>9953</b> TDZE <b>143</b> Apt Elev <b>143</b>
---------------------------	------------------------	---

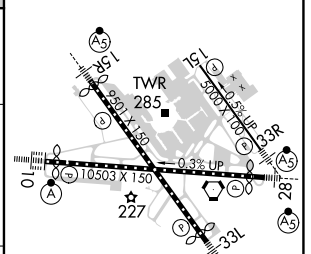
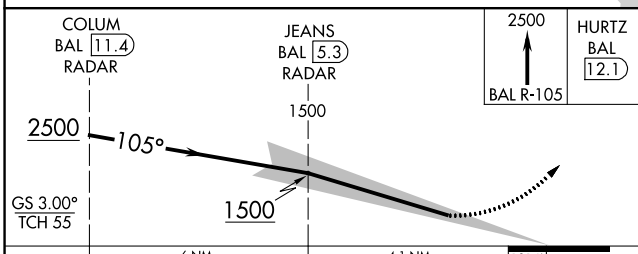
BALTIMORE/  
WASHINGTON INTL THURGOOD MARSHALL (BWI)  
**ILS RWY 10 (SA CAT I)**

RADAR required for procedure entry. DME required.		ALSIF-2 	MISSED APPROACH: Climb to 2500 on BAL VORTAC R-105 to HURTZ/BAL 12.1 DME/RADAR and hold.
Requires specific OPSPEC, MSPEC, or LOA approval and use of HUD to DH.			
D-ATIS <b>115.1 127.8</b>	POTOMAC APP CON <b>119.0 282.275</b> (020°-100°) <b>119.7 290.475</b> (131°-180°) <b>124.55 317.425</b> (101°-130°) <b>128.7 307.9</b> (181°-019°)	BALTIMORE TOWER <b>119.4 257.8</b>	GND CON <b>121.9</b>
			CLNC DEL <b>118.05</b>



NE-3, 07 OCT 2021 to 04 NOV 2021

NE-3, 07 OCT 2021 to 04 NOV 2021



CATEGORY	A	B	C	D
S-ILS 10	RA 191/14 150 DA 293			

**SA CATEGORY I ILS - SPECIAL AIRCREW  
& AIRCRAFT CERTIFICATION REQUIRED**

TDZ/CL Rwy 10 and 33L  
REIL Rwy 15L and 33R  
HIRL all rwy's